

Master Plan For WINGFIELD AND BARBARA BENNETT PARKS



Public Meeting #02 October 30, 2024

Project Team



Barb Santner
Stantec
Project Manager/Landscape Architect



Jack Hawkins
Hawkins Architecture
Project Architect



Karina Mercier
City of Reno Parks
Project Manager



Gary Lacy
Recreation Engineering and Planning
River and Recreation Planning



Agenda

Goal: Present Preferred Master Plan

- Vision
- Recap of Public Meeting and Survey #2 (Concepts)
- Wingfield Park
- Whitewater Park
- Barbara Bennett Park
- Questions/Discussion
- Live Poll
- Project Overview



Vision

Reno Parks, Recreation and Open Space Master Plan

Goal #6 - A Regional Destination:

Restore and enhance the Truckee River Corridor and other strategic, undeveloped regional projects.

Top Recommendations:

Program, Develop and Activate the City of Reno Truckee River Corridor and Downtown Public Spaces to Support the Newly Envisioned Parks System.

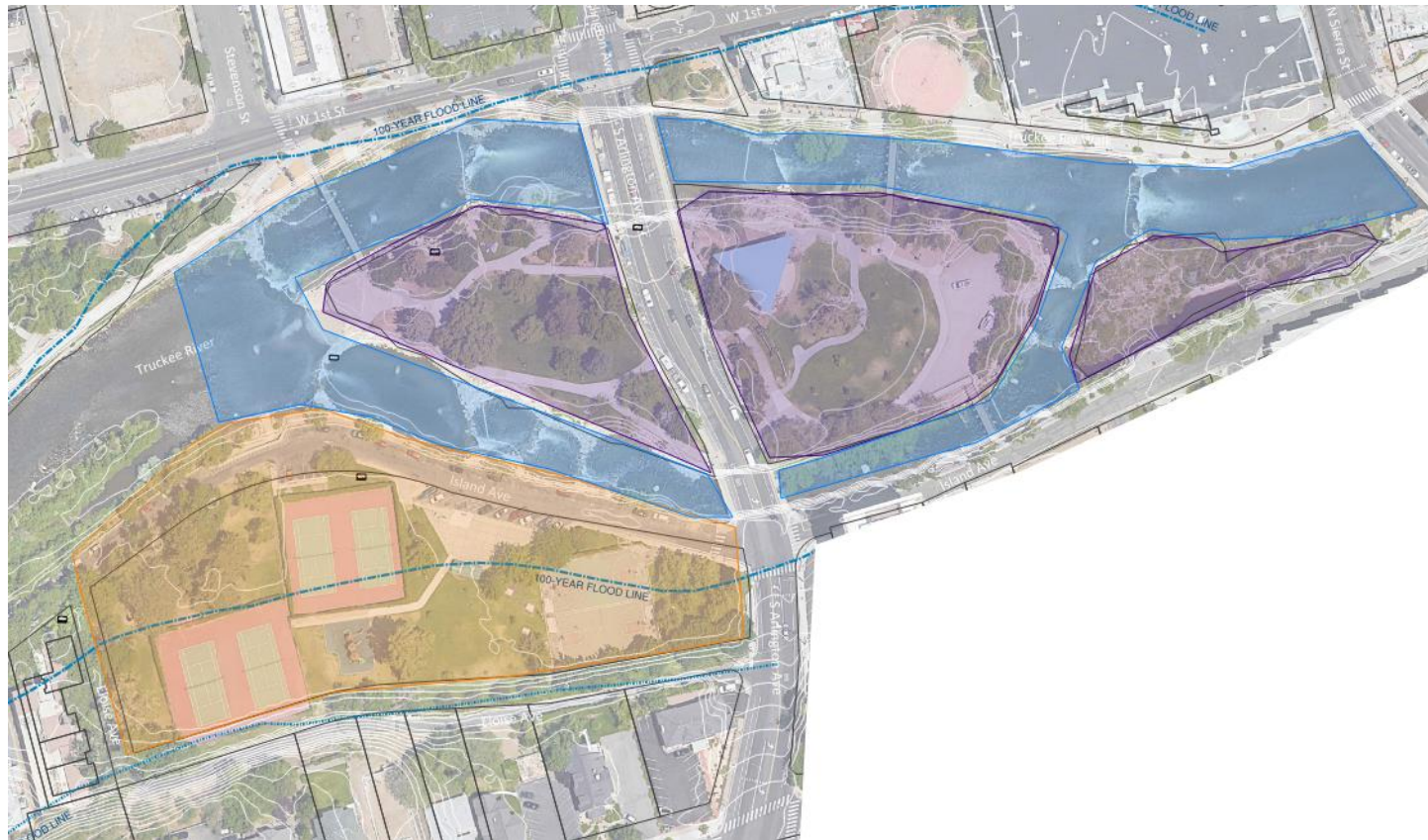
‘Wingfield Park is the Nucleus of Our Community and the Heart of ARTOWN’

*Beth McMillan, ARTOWN Executive Director

The Parks

Three park areas are identified. Wingfield and the Whitewater Park are all considered Wingfield Park.

[Wingfield Park Facilities](#) | [Barbara Bennett Park Facilities](#) | [Whitewater Park Facilities](#)



Concept Plan A



BARBARA BENNETT PARK LEGEND

- A** Restroom (1)
- B** Playground w/ Shade (10,700 sf)
- C** Basketball (2)
- D** Circulation: One Way Loop
- E** Parking: Parallel (39)
- F** Pedestrian Bridge at Second Pool
- G** River Access: Promenade w/ Overlooks/Railings
- H** Open Turf Picnic Area
- I** Tennis Courts (2)
- J** Pickleball Courts (6)
- K** Lighting: Replace + Add Cameras [Whole Park]
- L** Removed Wall for improved Sight Lines

WHITEWATER PARK LEGEND

- A** Concrete Drop Structure
- B** Remove Cobble
- C** Improved River Access
- D** New Boulder Toe Pedestrian Access
- E** New Dedicated Fish Passage
- F** New Surf Wave
- G** New Pedestrian Bridge for Floodable Path
- H** Kayak Freestyle Area
- I** Floodable Path; Extend to City Plaza ADA Ramp
- J** Floodable Path; Extend to Sierra Street Access
- K** Floodable Path; Extend to Virginia St ADA Ramp
- L** Access Point: Improved w/ Sierra St Bridge Project
- M** Rock Island at Pier

WINGFIELD PARK LEGEND

- A** Amphitheater: Renovate in Place
- B** Wall Panels: Replace with Removable Panels
- C** Turf: Slope to Amphitheater to Improve Viewing
- D** Limb Up Trees for Visibility/Safety (Whole Park)
- E** New Tracs: Perimeter Turf and River Edge
- F** Lighting: Replace + Add Cameras (Whole Park)
- G** Maintain ADA Access, Replace Railings
- H** Bridge Landing Redesign w/ Wall Mural/Texture
- I** Add Accessible Picnic Nodes
- J** Widen Vehicular Path to 12', enlarge turf seating
- K** New Pad for Removable Restroom/Greenroom
- L** Climb on Tree Trunk from Salvaged Tree

Concept Plan B



BARBARA BENNETT PARK LEGEND

- A** Restroom (1)
- B** Playground w/ Shade (10,100 sf)
- C** Basketball (1)
- D** Circulation: One Way Loop
- E** Parking: Parallel (34), Angular (3)
- F** Pedestrian Bridge at Second Pool
- G** River Access: Promenade w/ Cobble Edge
- H** Open Turf Picnic Area
- I** Tennis (1), Pickleball (3)
- J** Lighting: Replace + Add Cameras (Whole Park)
- K** Removed Wall for Improved Sight Lines

WHITewater PARK LEGEND

- A** Concrete Drop Structure
- B** Remove Cobble
- C** Improved River Access
- D** New Boulder Toe Pedestrian Access
- E** New Dedicated Fish Passage
- F** New Surf Wave
- G** New Pedestrian Bridge for Floodable Path
- H** Kayak Freestyle Area
- I** Floodable Path; extend to City Plaza ADA Ramp
- J** Floodable Path; Extend to Sierra Street Access
- K** Floodable Path; Extend to Virginia St ADA Ramp
- L** Access Point Improved w/ Sierra St Bridge Project
- M** Rock Island at Pier

WINGFIELD PARK LEGEND

- A** Replace w/ Shade Structure or Removable Stage
- B** Wall Panels: Replace with Removable Panels
- C** Turf: Slope to Amphitheater to Improve Viewing
- D** Limb Up Trees for Visibility/Safety (Whole Park)
- E** New Trees: Perimeter Turf and River Edge
- F** Lighting: Replace + Add Cameras (Whole Park)
- G** Maintain ADA Access, Replace Railings
- H** Bridge Landing Redesign
- I** Add Accessible Picnic Nodes
- J** Widen Vehicular Path to 12'; enlarge turf seating
- K** New Pad for Removable Restroom/Greenroom
- L** Climb on Tree Trunk from Salvaged Tree

Concept Plan C



BARBARA BENNETT PARK LEGEND

- A** Restroom (1)
- B** Playground w/ Shade (9,600 sf)
- C** Basketball (1)
- D** Circulation: Central Two Way with Turn Around
- E** Parking: Parallel (47), Perpendicular (17)
- F** Pedestrian Bridge at Second Pool
- G** River Access: Grass Picnic w/ Cobble Edge
- H** Open Turf Picnic Area with Formal Shade
- I** Dog Park (.52 acres)
- J** Perimeter Loop Path or One Way Roadway
- K** Lighting: Replace + Add Cameras (park-wide)
- L** Removed Wall for improved Sight Lines

WHITewater PARK LEGEND

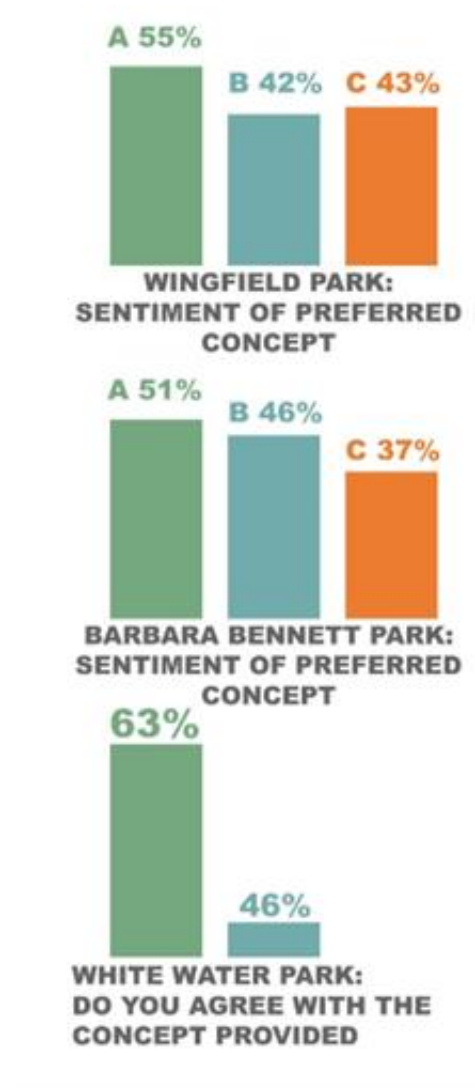
- A** Concrete Drop Structure
- B** Remove Cobble
- C** Improved River Access
- D** New Boulder Toe Pedestrian Access
- E** New Dedicated Fish Passage
- F** New Surf Wave
- G** New Pedestrian Bridge for Floodable Path
- H** Kayak Freestyle Area
- I** Floodable Path; extend to City Plaza ADA Ramp
- J** Floodable Path; Extend to Sierra Street Access
- K** Floodable Path; Extend to Virginia St ADA Ramp
- L** Access Point Improved w/ Sierra St Bridge Project
- M** Rock Island at Pier

WINGFIELD PARK LEGEND

- A** Shade Structure or Removable Stage Area
- B** Wall Panels; Replace with Removable Panels
- C** Turf; Natural Grade Fall Improves Stage Viewing
- D** Limb Up Trees for Visibility/Safety (Whole Park)
- E** New Trees: Perimeter Turf and River Edge
- F** Lighting: Replace + Add Cameras (Whole Park)
- G** Maintain ADA Access, Replace Railings
- H** Bridge Landing Reesign
- I** Add Accessible Picnic Nodes
- J** Widen Vehicular Paths to 12', enlarge turf seating
- K** New Pad for Removable Restroom/Greentroom
- L** Climb on Tree Trunk from Salvaged Tree
- M** Portable Restroom and Vendors Area

Recap Public Meeting and Survey #2 (Concepts)

- Public Meeting, November 16, 2023
- Online Survey #2, March 4 to April 1, 2024



Survey #2 Results



Preferred Plan

- ❑ The Preferred Plan represents elements of all plans, public input, stakeholder input, the Parks and Recreation and Public Works Departments.

- ❑ Security and Safety
 - Lighting and Cameras: replace existing lighting and add security cameras tied to City IT system to monitor activity.
 - Trees: limb up existing trees for views into parks.
 - Trees: choose new trees with higher branching for views into parks.
 - Remove items that obstruct views – walls, other structures.
 - Improve vehicular circulation allowing easier patrolling.

Preferred Plan Overall



TREE LEGEND

- Existing to Remain
- Proposed with Arlington Bridge Project
- Proposed Future
- Removed with Arlington Bridge Project
- Removed Future

PARK KEY MAP

BARBARA BENNETT PARK LEGEND (all keynotes with gray outline/letters)

<ul style="list-style-type: none"> A Portland Loo Restrooms (2) B Destination Playground w/ Shade (8,000 sf) C Full Court (1) and Half Court (2) Basketball D Vehicular Circulation: One Way Loop E Parking: Parallel (35), Angled (7) F Pedestrian Bridge G River Edge: Grass Picnic w/ Terraced Boulders 	<ul style="list-style-type: none"> H Open Turf Picnic Area and Formal Shade Picnic I Dog Parks (half acre split for large/small dogs) J Perimeter Loop Path or One-Way Roadway K Lighting: Replace + Add Cameras (park-wide) L Removed Wall for Improved Sight Lines M Tennis Court (1) with Pickleball Overlay (2)* <p style="font-size: small;">*Optional Removal to Open Turf</p>
--	--

WHITewater PARK LEGEND (all keynotes with blue outline/letters)

<ul style="list-style-type: none"> A Concrete Drop Structure* B Remove Cobble* C Improved River Access* D New Boulder Toe Pedestrian Access E New Dedicated Fish Passage F New Surf Wave G Rock Island of Pier 	<ul style="list-style-type: none"> H Kayak Freestyle Area I Pedestrian Bridge Built in Flood Shadow of Island J Trail, 10' Wide Concrete, Flood-Proof, Built on Existing Concrete/Rock (No Wetland Impact) K Non-ADA River/Cochran Ditch Access* L ADA River Access Improved* M Observation Tower* <p style="font-size: small;">*Indicates work by separate project</p>
--	---

WINGFIELD PARK LEGEND (all keynotes with green outline/letters)

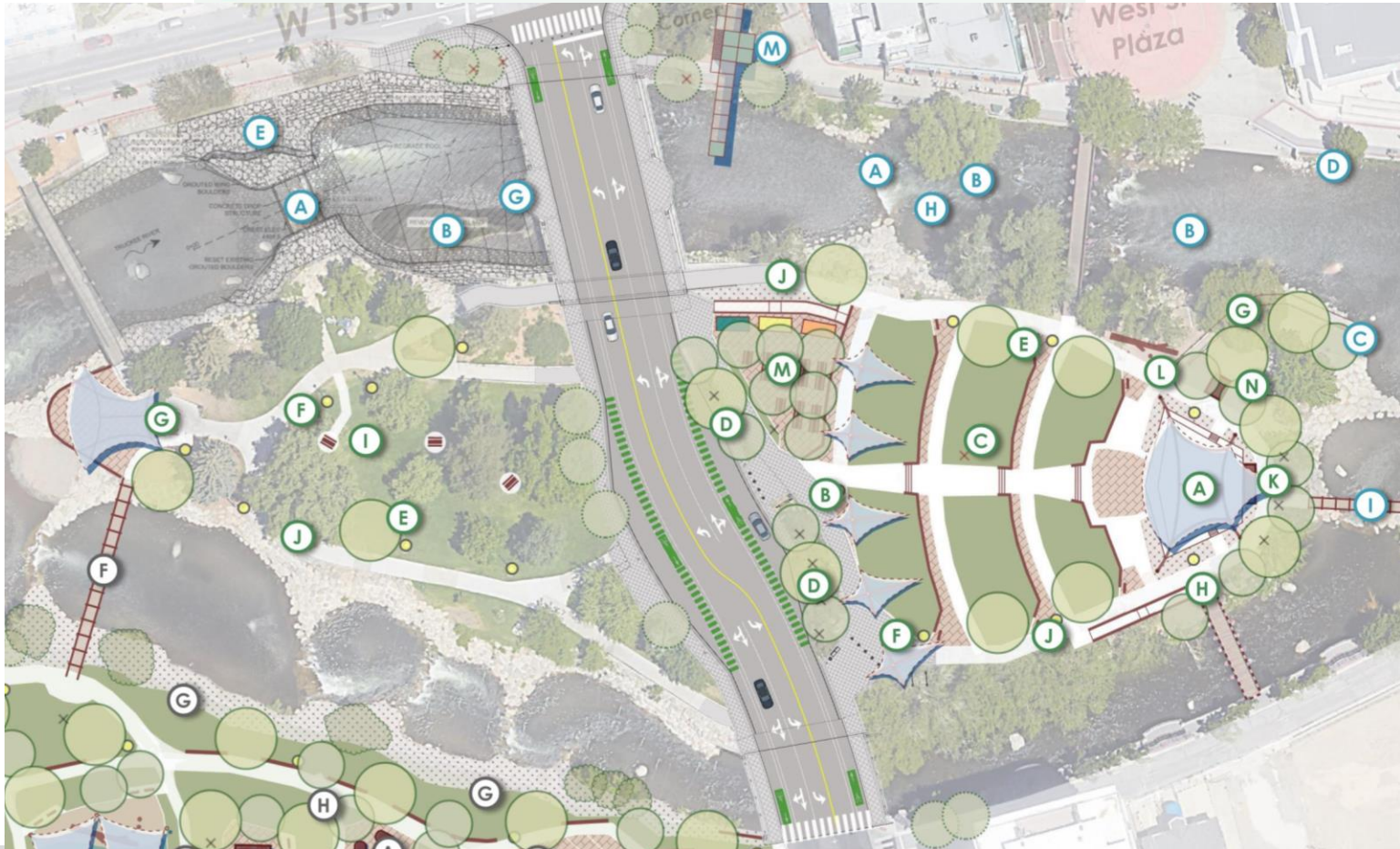
<ul style="list-style-type: none"> A Permanent Signature Bandshell Structure w/ Stage B Remove Walls (Improved Visibility & Flood Flows) C Turf Terraces w/ Seat Walk: Improves Viewing D Limb Up or Replace Trees for Visibility/Safety E New Trees: Perimeter Turf and River Edge F Lighting: Replace + Add Cameras (Whole Park) G Regrade Path for ADA Without Railings 	<ul style="list-style-type: none"> H Bridge Removal or Landing Redesign I Accessible Picnic Node J Vehicular Access Path K New Pod for Removable Restroom/Greenroom L Climb on Tree Trunk from Salvaged Tree M Food Truck & Vendors Area w/ Trees N Portable/Removable Storage Unit for Events
--	--



Wingfield Park - Preferred Plan

WINGFIELD PARK LEGEND *(all keynotes with green outline/letters)*

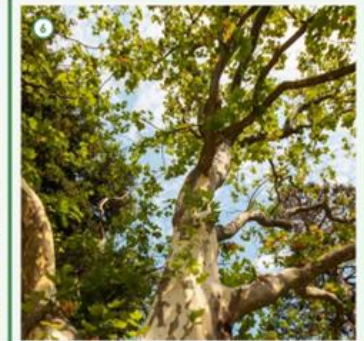
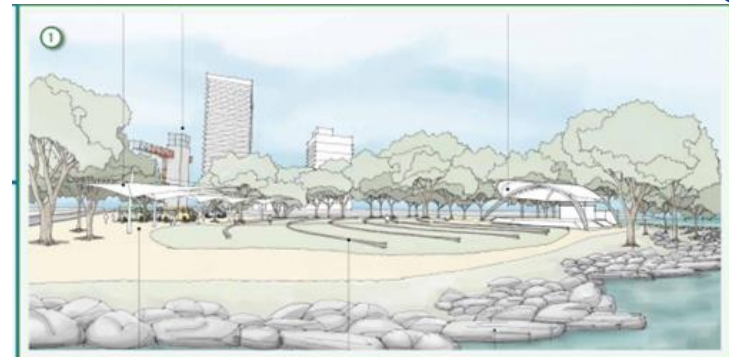
- (A)** Permanent Signature Bandshell Structure w/ Stage
- (B)** Remove Walls (Improved Visibility & Flood Flows)
- (C)** Turf Terraces w/ Seat Walls Improves Viewing
- (D)** Limb Up or Replace Trees for Visibility/Safety
- (E)** New Trees: Perimeter Turf and River Edge
- (F)** Lighting: Replace + Add Cameras (Whole Park)
- (G)** Regrade Path for ADA Without Railings
- (H)** Bridge Removal or Landing Redesign
- (I)** Accessible Picnic Node
- (J)** Vehicular Access Path
- (K)** New Pad for Removable Restroom/Greenroom
- (L)** Climb on Tree Trunk from Salvaged Tree
- (M)** Food Truck & Vendors Area w/ Trees
- (N)** Portable/Removable Storage Unit for Events



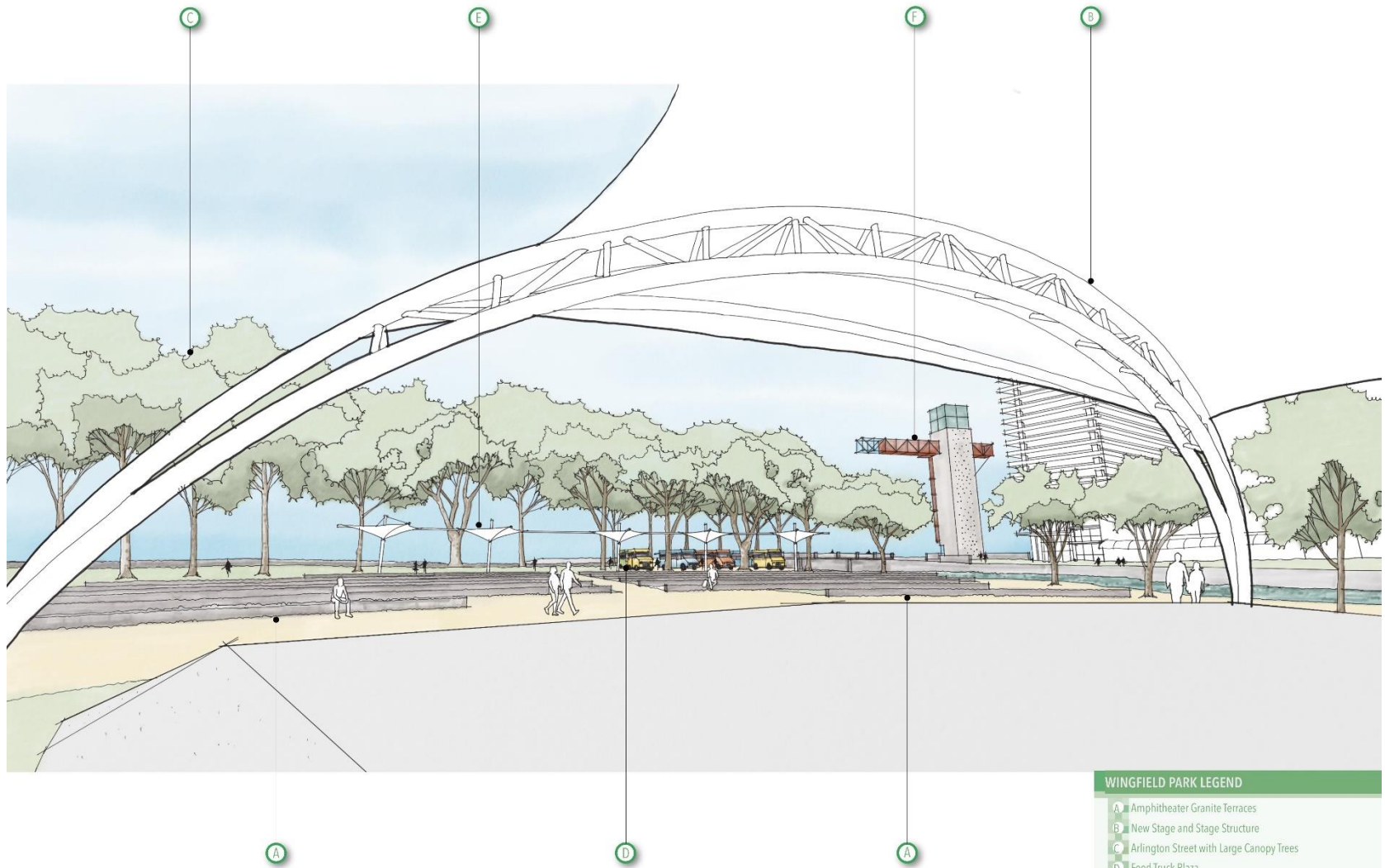
Wingfield Park - Amenities

WINGFIELD PARK IMAGE LEGEND

- ① Signature Bandshell Structure w/ Stage, Observation Tower in background
- ② Terraced Amphitheater
- ③ Salvaged Tree as Climable Feature
- ④ Food Truck & Vendors Area w/ Trees
- ⑤ Custom Shade at Western End of Park
- ⑥ New Large Sycamore Shade Trees

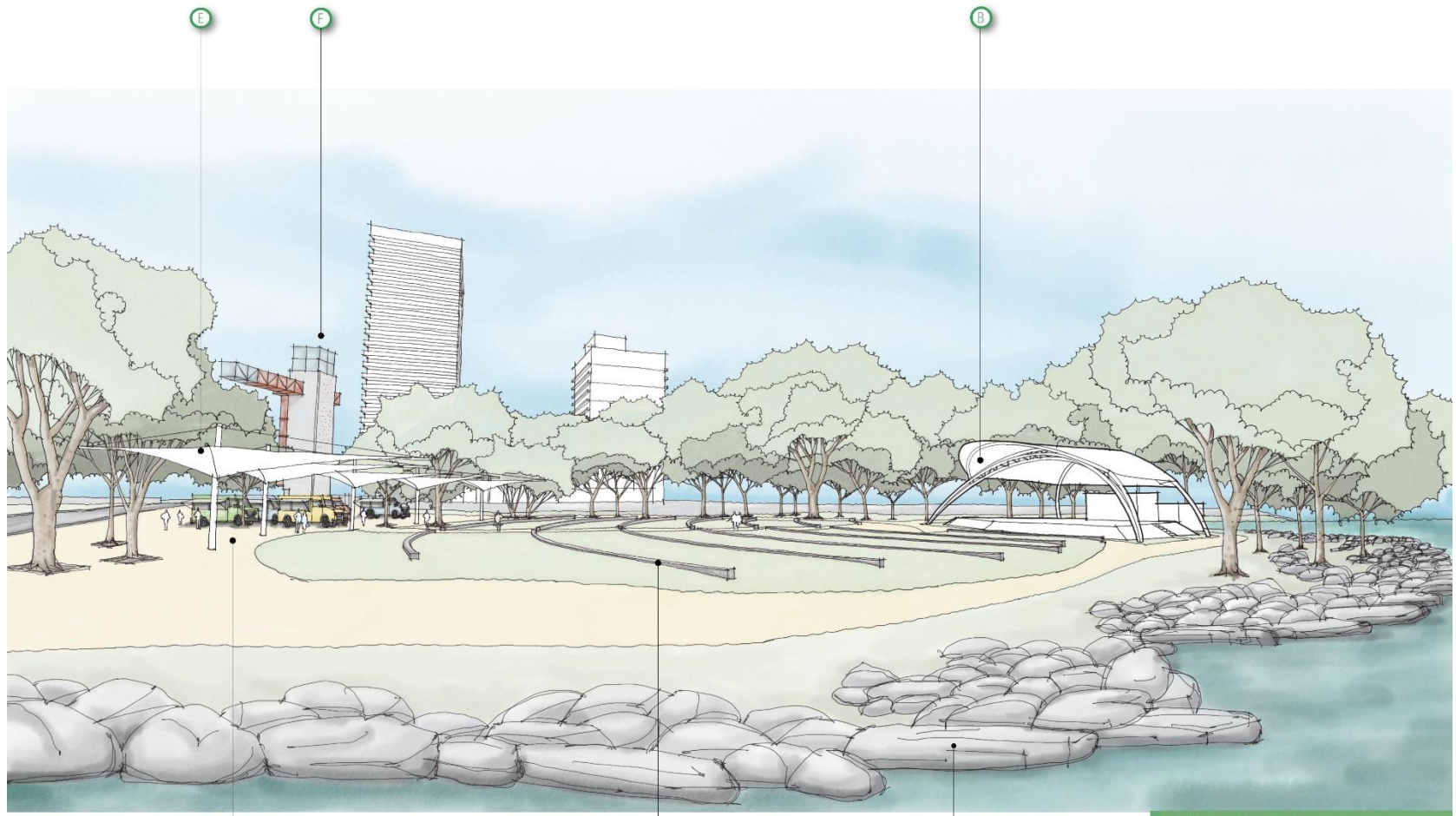


Wingfield Park - Amphitheater



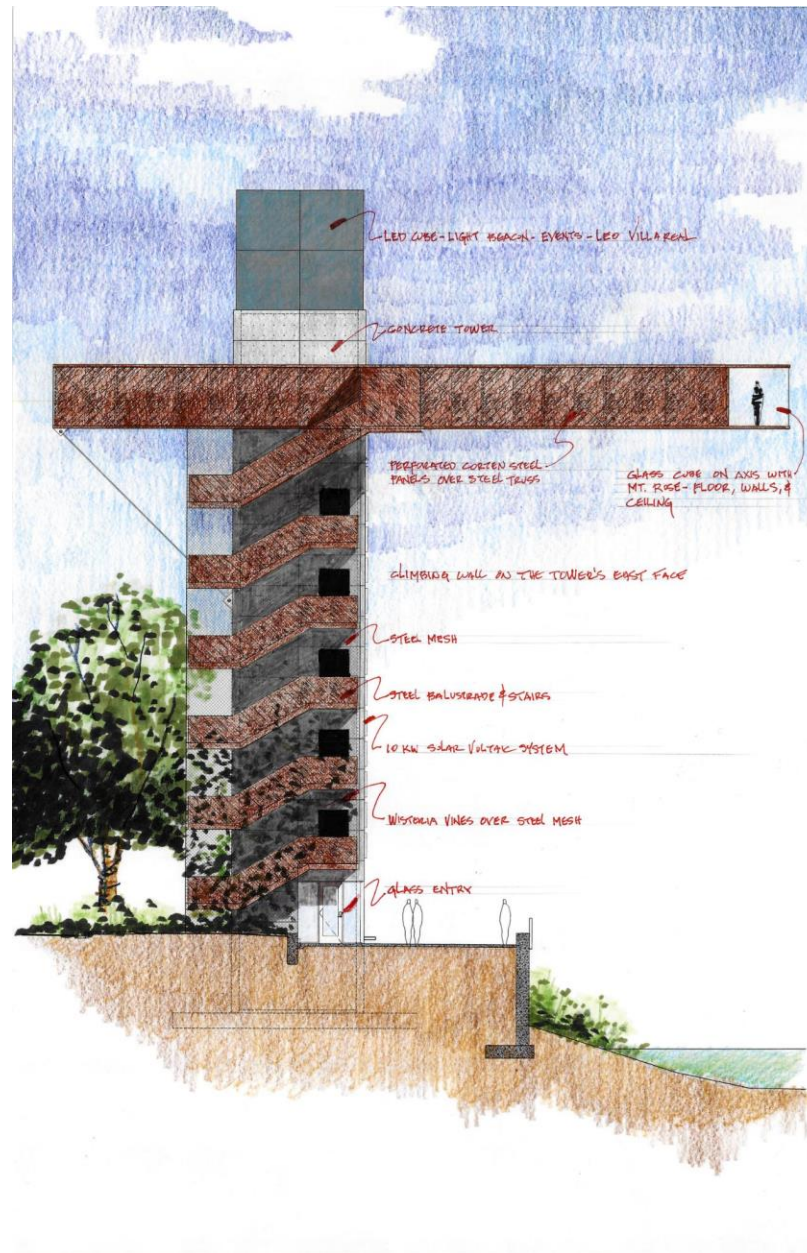
- WINGFIELD PARK LEGEND**
- A Amphitheater Granite Terraces
 - B New Stage and Stage Structure
 - C Arlington Street with Large Canopy Trees
 - D Food Truck Plaza
 - E Fabric Entry Canopies
 - F Reno Observation Tower

Wingfield Park - Amphitheater



WINGFIELD PARK LEGEND	
A	Amphitheater Granite Terraces
B	New Stage and Stage Structure
C	Truckee River
D	Food Truck Plaza
E	Fabric Entry Canopies
F	Reno Observation Tower

Wingfield Park – Observation Tower



Wingfield Park – Observation Tower



Wingfield Park – Observation Tower



Whitewater Park - Preferred Plan

WHITEWATER PARK LEGEND *(all keynotes with blue outline/letters)*

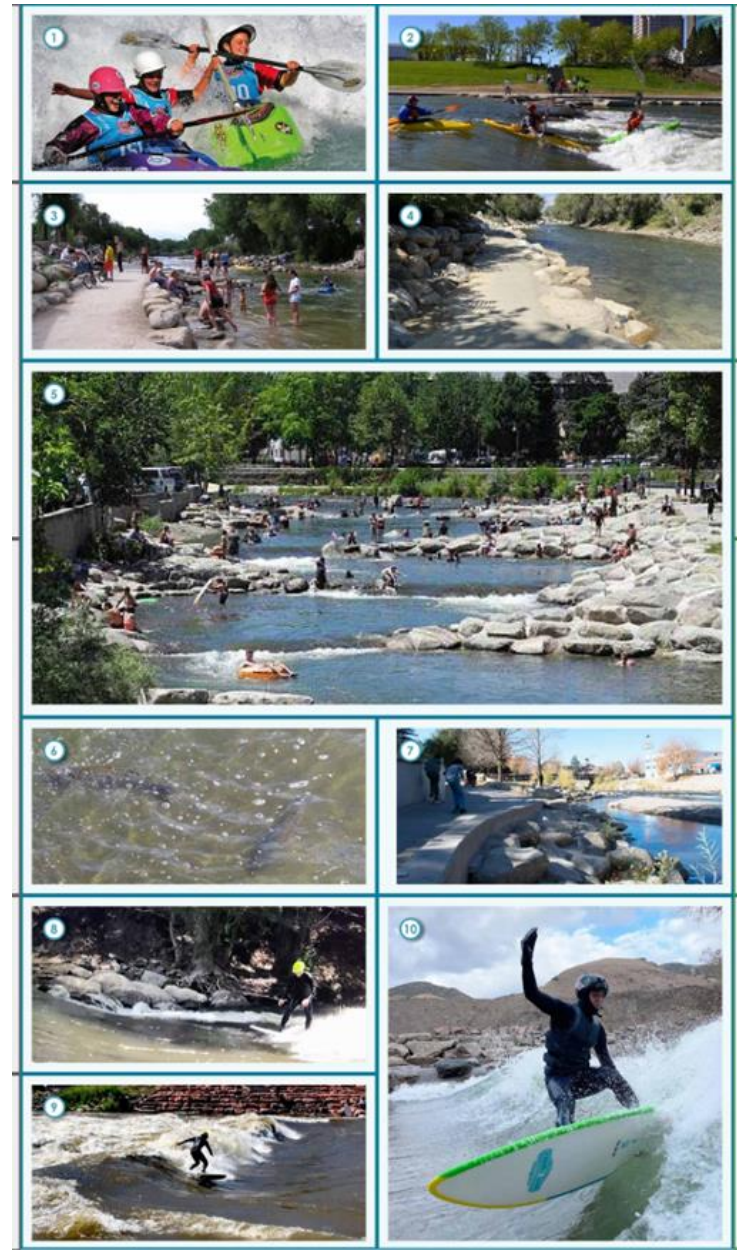
- | | |
|--|---|
| (A) Concrete Drop Structure* | (H) Kayak Freestyle Area |
| (B) Remove Cobble* | (I) Pedestrian Bridge Built in Flood Shadow of Island |
| (C) Improved River Access* | (J) Trail, 10' Wide Concrete, Flood-Proof, Built on Existing Concrete/Rock (No Wetland Impact) |
| (D) New Boulder Toe Pedestrian Access | (K) Non-ADA River/Cochran Ditch Access* |
| (E) New Dedicated Fish Passage | (L) ADA River Access Improved* |
| (F) New Surf Wave | (M) Observation Tower* |
| (G) Rock Island at Pier | |
- *indicates work by separate project



Whitewater Park - Amenities

WHITewater PARK IMAGE LEGEND

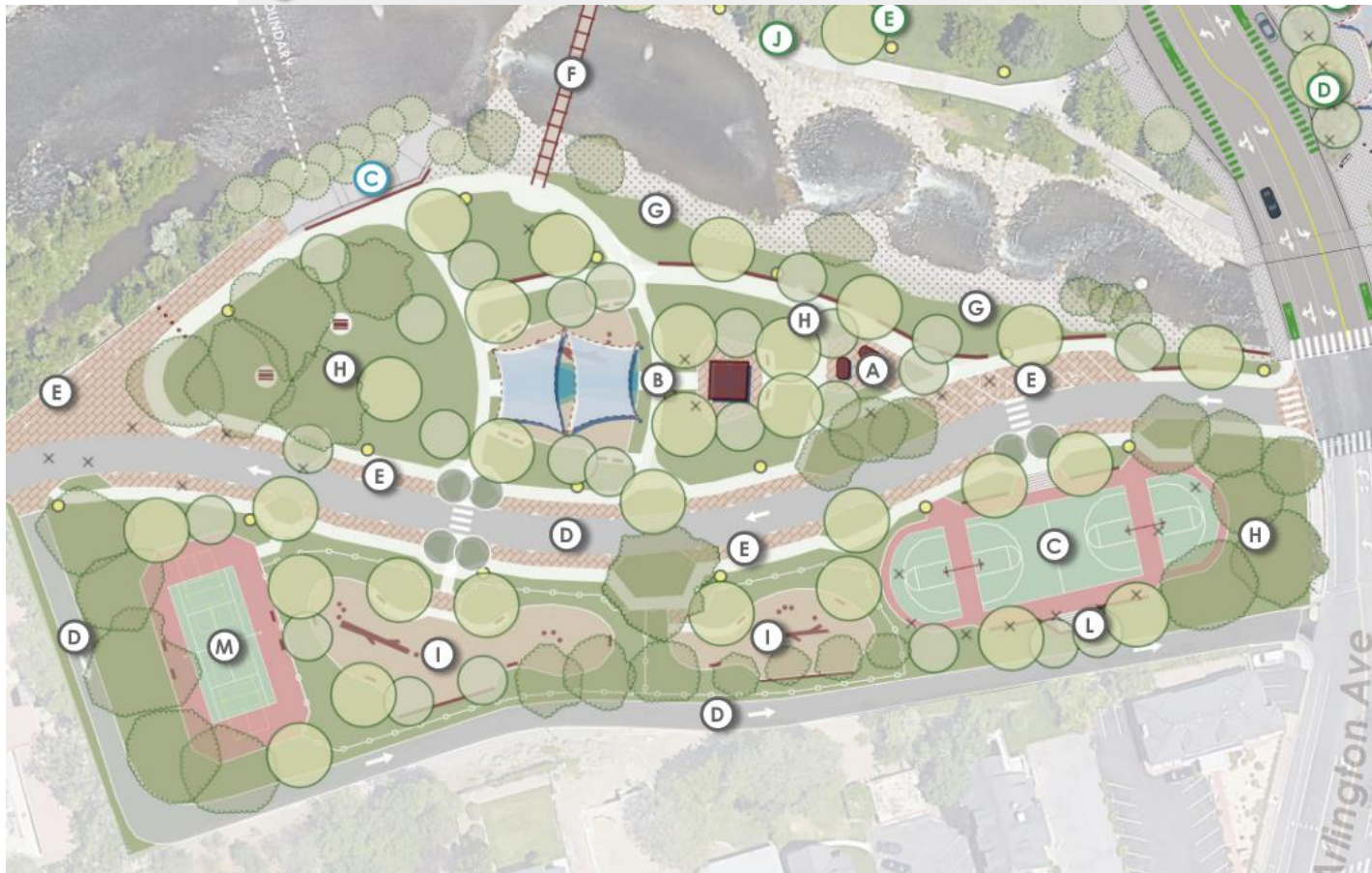
- | | |
|--|----------------------------------|
| ① Kayak Freestyle Area | ④ Dedicated Fish Passage |
| ② Kayak Freestyle Area | ⑦ Existing Flood Resistant Trail |
| ③ Flood Resistant Trail w/ Cobble Edge | ⑧ Surf Wave Feature in River |
| ④ Flood Resistant Trail w/ Cobble Edge | ⑨ Surf Wave Feature in River |
| ⑤ Terraced Boulder Improvements | ⑩ Surf Wave Feature in River |



Barbara Bennett – Preferred Plan

BARBARA BENNETT PARK LEGEND *(all keynotes with grey outline/letters)*

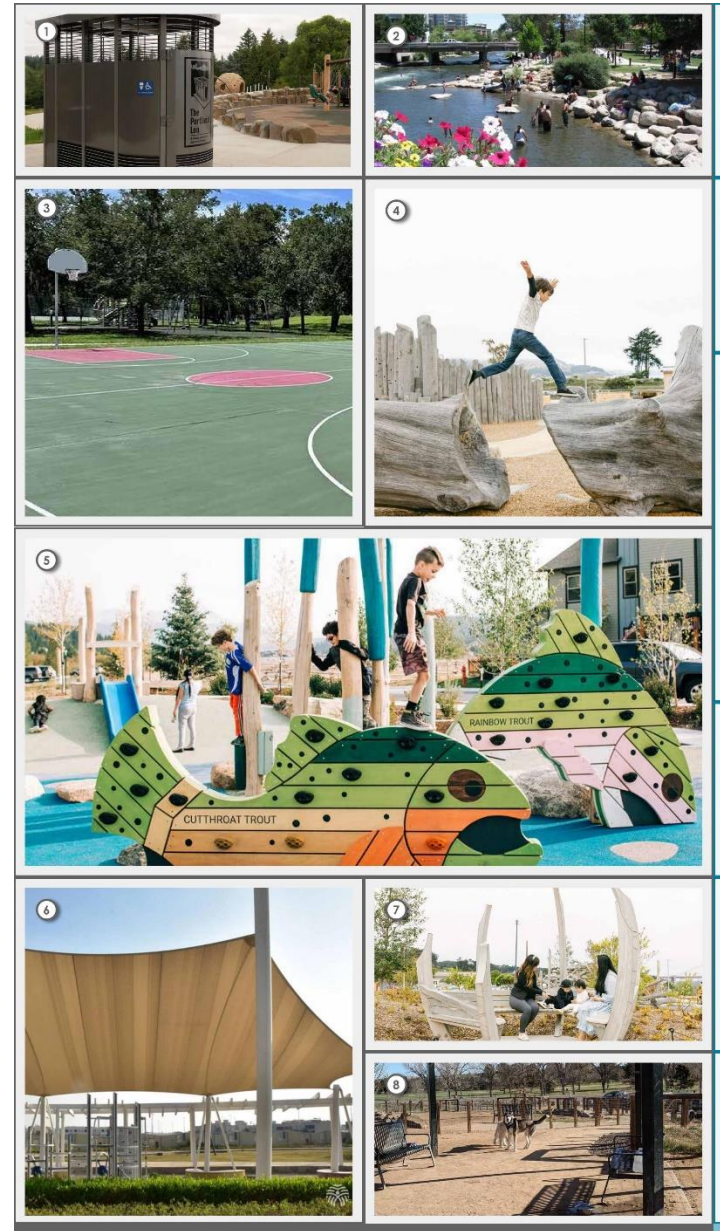
- | | |
|--|---|
| (A) Portland Loo Restrooms (2) | (H) Open Turf Picnic Area and Formal Shade Picnic |
| (B) Destination Playground w/ Shade (8,000 sf) | (I) Dog Parks (half acre split for large/small dogs) |
| (C) Full Court (1) and Half Court (2) Basketball | (J) Perimeter Loop Path or One-Way Roadway |
| (D) Vehicular Circulation: One Way Loop | (K) Lighting: Replace + Add Cameras (park-wide) |
| (E) Parking: Parallel (35), Angled (7) | (L) Removed Wall for Improved Sight Lines |
| (F) Pedestrian Bridge | (M) Tennis Court (1) with Pickleball Overlay (2)* |
| (G) River Edge: Grass Picnic w/ Terraced Boulders | *Optional Removal to Open Turf |



Barbara Bennett - Amenities

BARBARA BENNETT PARK IMAGE LEGEND

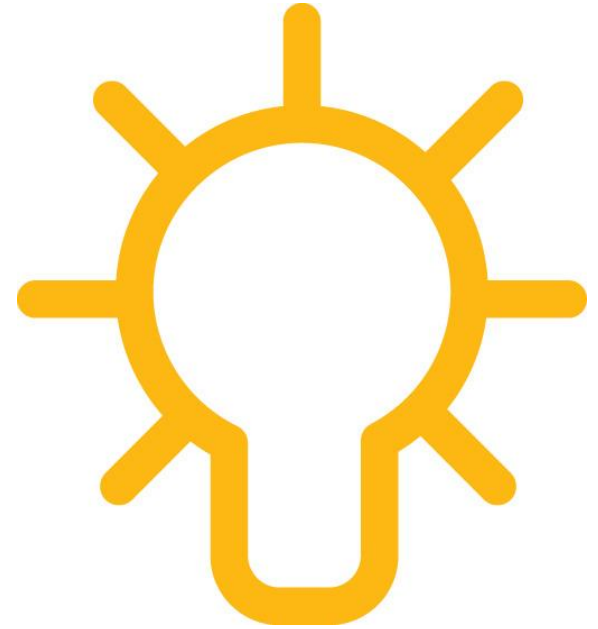
- ① Restroom Replacement (Portland Loo)
- ② River Access: Terraced Boulders
- ③ Basketball (Reconfigure/Renovate)
- ④ Reused Tree Trunk Play Features
- ⑤ Trout-Themed Nature Play Structure
- ⑥ Shade Over Play Areas
- ⑦ Playground Nest Seating Outpost
- ⑧ Dog Park with Salvaged Logs/Stumps



Questions and Answers

COMMENTS

- Raise your hand and moderator will let you in the Zoom Room to speak.



Live Poll

Wingfield Park Poll

1. Do you support the new bandshell structure and stage with removeable restroom/greenroom?

Yes
No

2. Do you support turf seating terraces?

Yes
No

3. Do you support locating vendors and food trucks near Arlington Avenue?

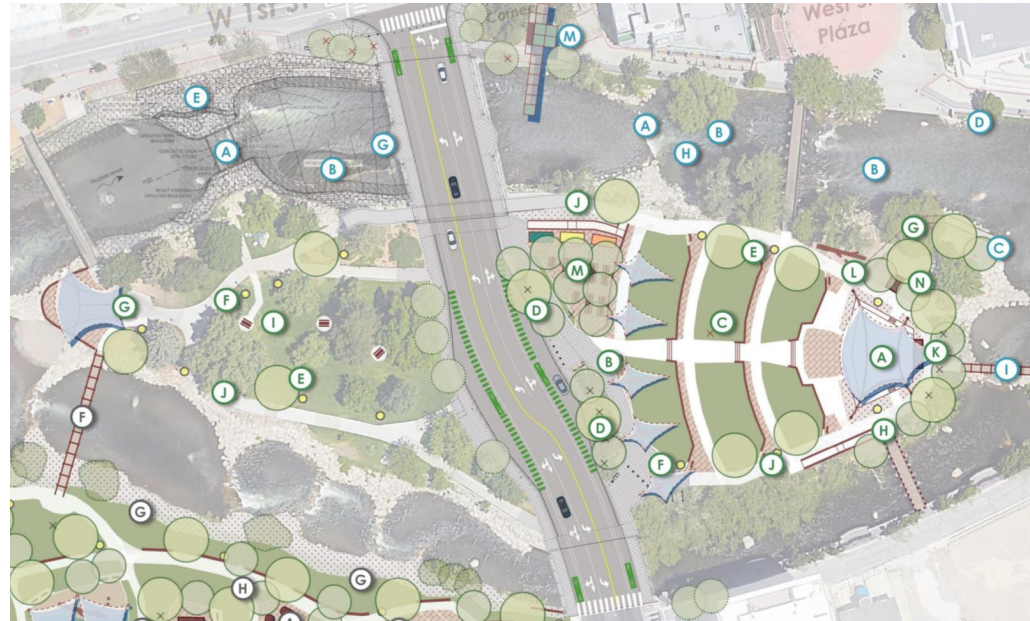
Yes
No

4. Do you support the observation tower?

Yes
No

5. Do you support the plan as presented?

Strongly Support
Moderately Support
Neither Support or Oppose
Do Not Support



Live Poll

Whitewater Park Poll

1. Do you support the new pedestrian bridge connecting Wingfield to Barbara Bennett Park across the south channel?

Yes

No

2. Do you support adding a surf wave with dedicated fish passage downstream of the Arlington Avenue Bridges?

Yes

No

3. Do you support the plan as presented?

Strongly Support

Moderately Support

Neither Support or Oppose

Do Not Support



Live Poll

Barbara Bennett Park Poll

1. Do you support removing the floodwall and providing a terraced boulder river edge with grass?

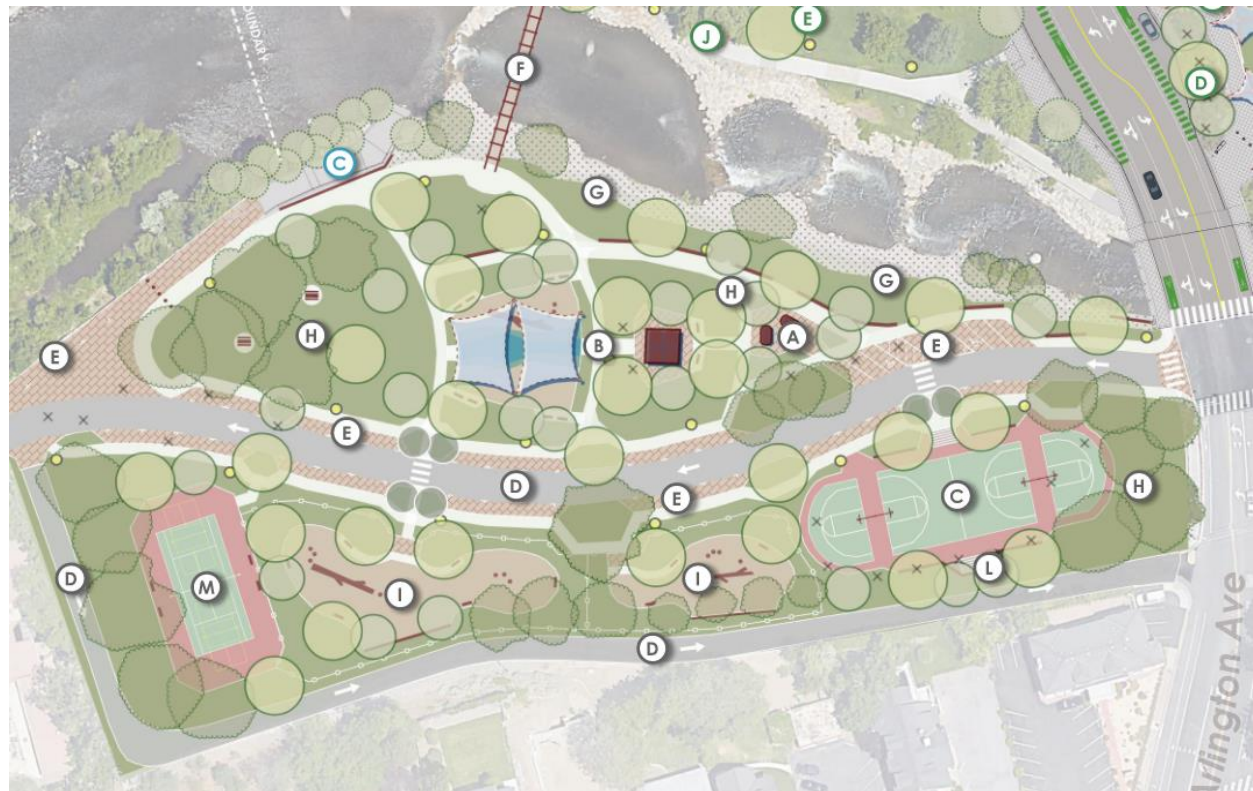
Yes
No

2. What are your highest priorities for new/improved amenities? (Select All that Apply, Multiple Choice Question)

Destination Playground
Basketball Courts
Dog park
Group Picnic Shelter
Tennis court

3. Do you support the plan as presented?

Strongly Support
Moderately Support
Neither Support or Oppose
Do Not Support



Project Overview - Next Steps

Ward 1 NAB

January 2023 ✦

Community/Stakeholder Meetings

March-August 2023 ✦

Public Survey #1

May 25 to June 16, 2023 ✦

Conceptual Master Plan Alternatives

September 2023 ✦

Public Workshop #1 Concept

November 2023 ✦

Survey #2

March 4 to April 1, 2024 ✦

Preliminary Master Plan and Stakeholder Input

May to October 2024

Public Workshop #2

October 30, 2024 ← [We Are Here](#)

Final Master Plan

January 2025

Parks Commission Input

City Council Information Update

January 2025

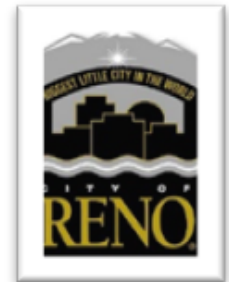


Questions?

Karina Mercier: City of Reno Parks Project Manager
(MercierK@Reno.Gov)

Barb Santner: Stantec Landscape Architect
(Barb.Santner@stantec.com)

Thank You!



Reno Parks Recreation and Open Space Master Plan

Summary of Findings

Park Acreage Gap Analysis

615.95 Acres

Reno Existing (2021) close-to-home Parks Acreage

1613.05 Acres

Close-to-Home Parks Needed from NRPA standard

Gap:
997.21 Acres

Parks and Recreation Department Operational Budget Analysis

\$20,426,799

FY22 **City of Reno** Adopted Budget for the Parks and Recreation Department

\$29,207,631

2022 **NRPA Recommended Median Budget** Annual Operating Expenditure by Jurisdiction Population

Gap:
\$8,980,832

Parks and Recreation Department Staffing Analysis

80.75 FTEs

FY22 **City of Reno** Total FTEs for the Parks and Recreation System

Gap:
30.20 FTEs

110.95 FTEs

2022 **NRPA Recommended Median Budget** Annual Operating Expenditure by Jurisdiction Population, Based on 4.2 FTEs per 10,000 Population

Gap:
125.30 FTEs

206.05 FTEs

2022 **NRPA Recommended Upper Quartile** Annual Operating Expenditure by Jurisdiction Population, Based on 7.8 FTEs per 10,000 Population