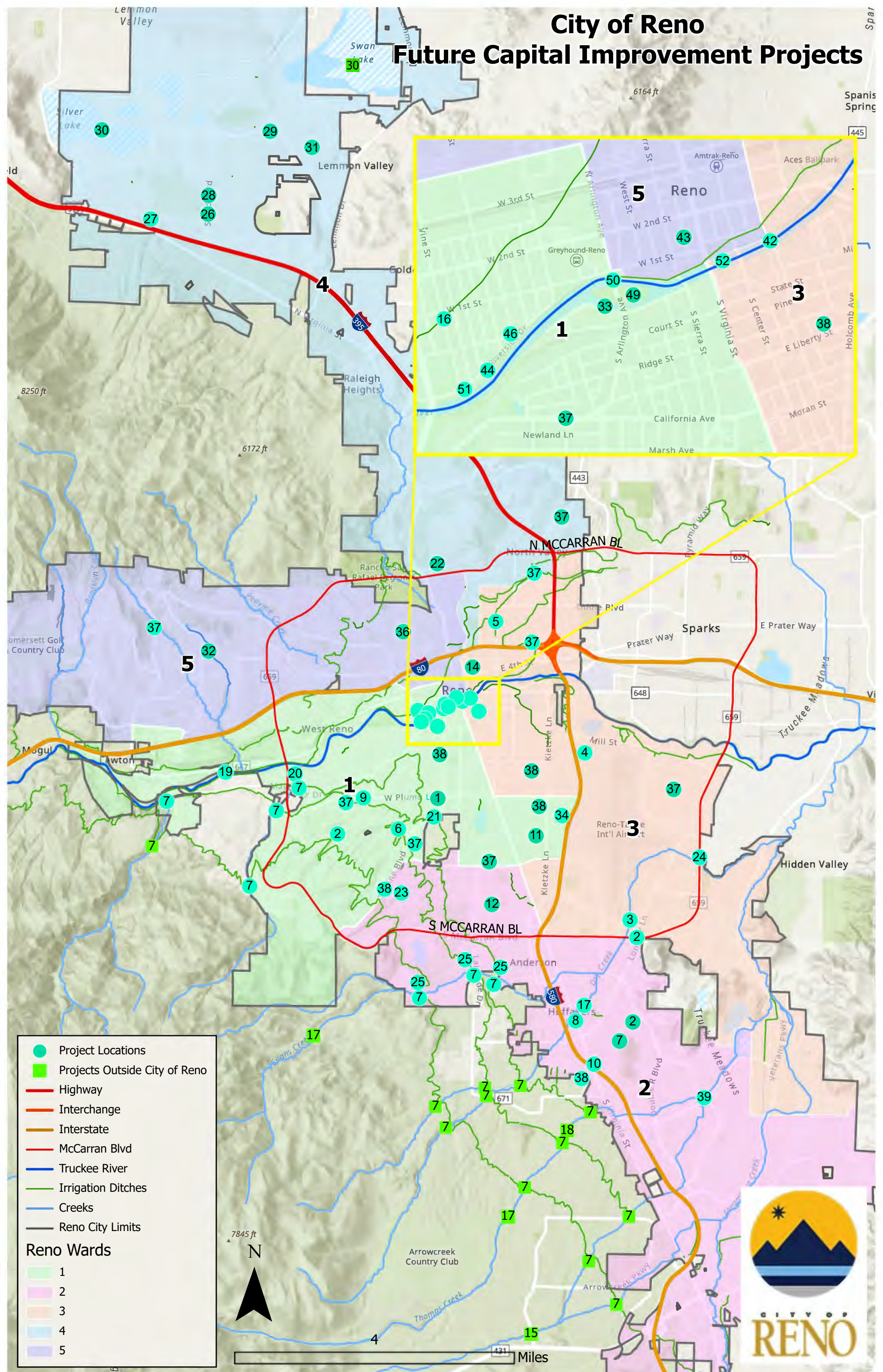


City of Reno Future Capital Improvement Projects



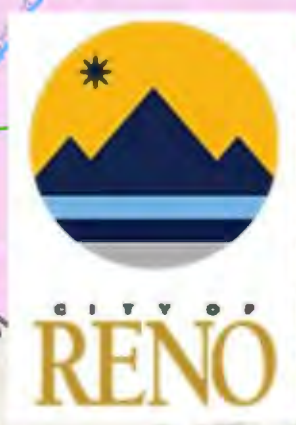
- Project Locations
- Projects Outside City of Reno
- Highway
- Interchange
- Interstate
- McCarran Blvd
- Truckee River
- Irrigation Ditches
- Creeks
- Reno City Limits

Reno Wards

- 1
- 2
- 3
- 4
- 5



431 Miles



Capital Improvement Projects	
	Bridges
42	Lake St Bridge - COR not responsible for total cost
49	Wingfield Ped Bridges - COR not responsible for total cost
	Downtown Flood Mitigation
43	Flood proofing DT
44	New Floodwalls (Riverside), all DTR land - COR not responsible for total cost
45	New Floodwalls (Riverside- Geotech)
46	Jones St Signal
50	Arlington Closure Gates
51	Riverside Pump Station
52	Replace Downtown Floodwalls - COR not responsible for total cost
	Storm Drain and Culvert Improvements
2	Master Planning CIP Project Outcomes (Unspecified Projects)
4	Matley Lane and Terminal Way Storm Drain and Catch Basins
5	Sadleir Southworth (Wells Avenue) Area Storm Drain Improvements
6	Belford Drainage overpass at Lake Ditch
8	7496 S. Virginia near Huffaker School
9	Aquila Ave/Krupp Circle Drainage Improvements
16	Vine Street Storm Drain Upgrades
19	Aspen Glen Dr. and White Fir St. or Ambrose Park--Structure
21	Rosewood Wash (Phase 2) discharge structures, channel improvements, culverts
22	Dandini Wash @ Comstock Structure
23	Dant Wash-culverts
24	Boynton Slough-Culverts @ McCarran
26	Culvert Replacement, Stead @ Silver Lake Road
27	Sediment basin at pipe inlet at Silver Lake Apartments (City right of way)
28	Stead Storm Drain and channel improvements
37	Miscellaneous Various Storm Drain: Greenridge to Moore, various "island 18", Edison Way, Sage St yard area, California Avenue, Isbell Roac Avenida de Landa, Wedekind, Scottsdale / Clear Acre
	Channel Improvements
10	Thomas Creek at South Virginia between approximately Patriot and Gallian storm drain improvements
13	Thomas Creek at Ventana Parkway
14	Evans Creek Block "N" storm drain Improvements at I80 to River
18	Thomas Creek: structures, culverts, flow splits, irrigation ditch bypass structures
20	Alum Creek--Channel and Ditch Modification
25	Evans Creek-Modify Head Gates, Channel improvements and structures
29	Horse Creek Channel Improvements Military Rd to Lear
31	Lemmon Valley Wash--Culvert
32	Chalk Creek Channel Stabilization
33	Truckee River Whitewater Park Repair Work
34	Margrave Ditch Erosion (by Reno Costco)
35	East Fork Chalk Creek at Sapphire Ridge Development
	Basin/Flood Plain Improvements
11	Yori Park Retention Basin
12	Manzanita Park Wash (With Excavation)
15	Whites Creek at Thomas Rd Detention Basin
17	Detention Basins: Thomas Creek at Zolezzi Detention Basin, Evans Creek at Ballardini Ranch, Evans Creek, Dry Creek @ Huffaker, Galena Narrows
36	In and Out Basins (Various Locations) 12th and Brookfield/12th and Washington
39	Double Diamond: Flood Map Refinements or Levee Improvement
	Other Improvement Projects
3	Future Phase: City of Reno Drainage Master Plan Documents
7	Irrigation Ditch Tributary Crossing Improvements
30	Swan Lake/Silver Lake Flooding -partial solutions
38	Miscellaneous Grading-Regrading: Len Circle, Orance and Apple St., Hatch, Brentwood, Walker, Skyline