



# City Manager's Office

## MEMORANDUM

**DATE:** 8/8/2023

**TO:** Mayor and City Council

**THROUGH:** Doug Thornley, City Manager Approved Electronically

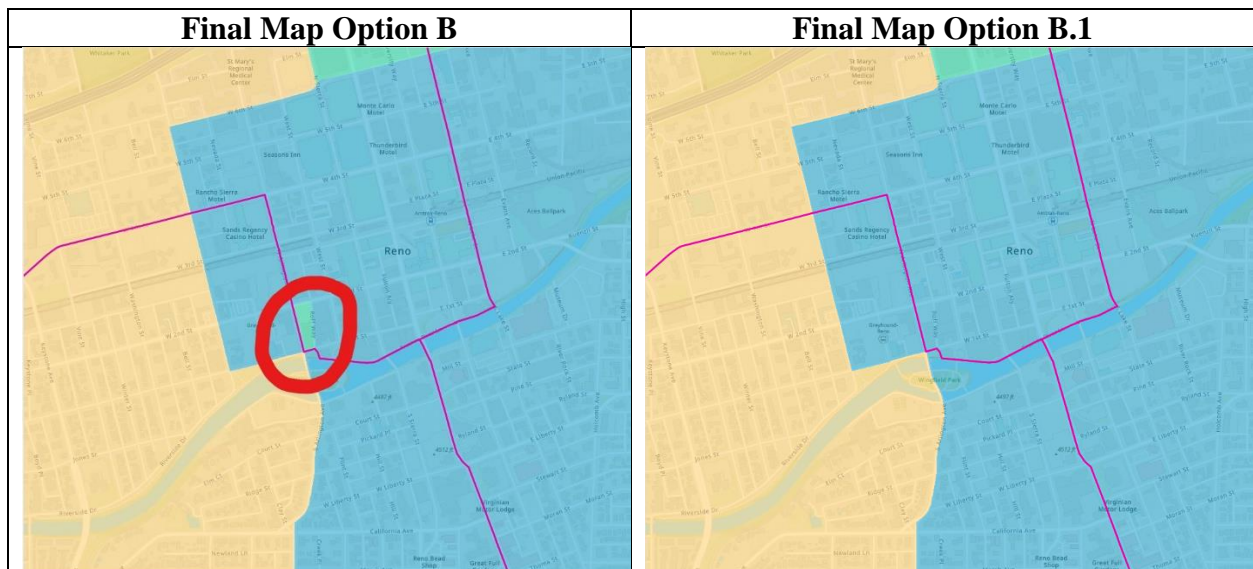
**FROM:** Calli Wilsey, Director of Policy and Strategy

**SUBJECT:** Technical Corrections to Final Maps B & D

This memo explains technical corrections to two of the proposed final map options for the 2023 redistricting process, as related to Item E.1 on the August 9 Reno City Council meeting. The corrected maps that address the issues described below are attached for the record. The City's redistricting website ([Reno.Gov/Redistricting](http://Reno.Gov/Redistricting)) will also be updated with this information.

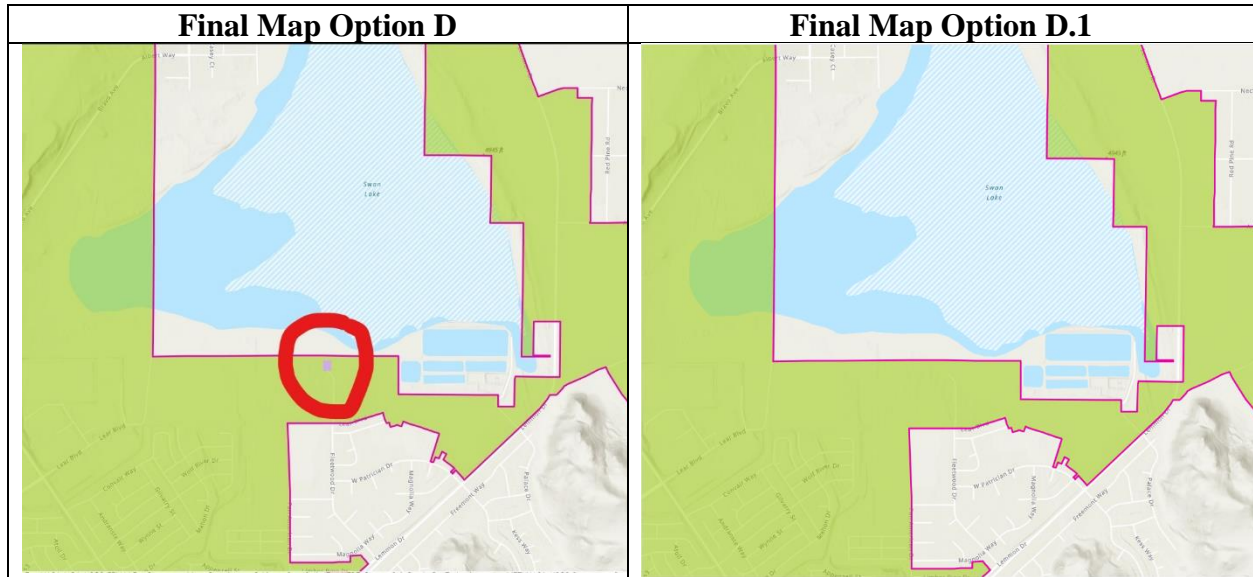
### Final Map Option B.1

In Final Map Option B, an unintentional island was created in Ward 1 during the drafting process (screenshot below). The island presents issues with contiguity as required by the Reno City Charter. Attached to this memo is a revised map that corrects the issue; it is labeled as Final Option B.1 for clarity in the record. A screenshot of the corrected area is below as well. The correction lowers the deviation in this option to 3.6 percent (from 4.2 percent).



## Final Map Option D.1

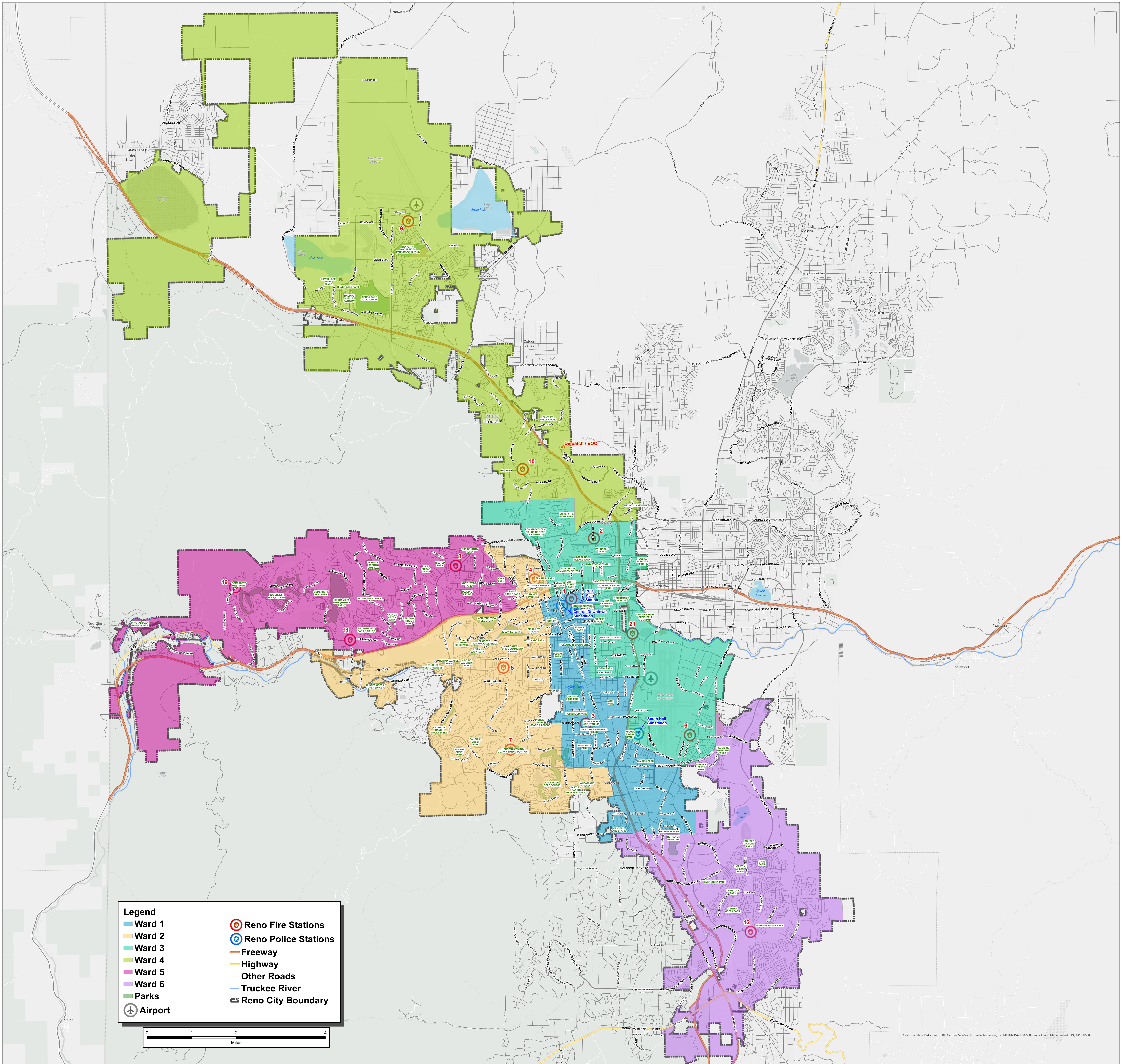
Similar to the issue in Option B, an unintentional island was created in Ward 4 in Final Map Option D. Screenshots of the area are below. Attached is Final Map Option D.1, which corrects this issue. There is no change to deviation with this correction.



### Attachments:

- Final Map Option B.1
- Final Map Option D.1







# City of Reno

## Redistricting Summary Statistics – ID 190462 Final Option B1

08/07/2023

### Equal Population Criterion

Ideal Population	44,028
Overall Deviation	3.6%
<div style="display: flex; justify-content: space-between; width: 100%;"> <span style="background-color: #4CAF50; color: white; padding: 2px 5px;">&lt; 5.0%</span> <span style="background-color: #FFEB3B; color: black; padding: 2px 5px;">&gt; 5.0%</span> </div>	

2020 Census P.L. 94-171 Redistricting  
Data Summary Files - Total Population.

### Total Population & Deviation per Ward

Ward	Total Population	Over / Under Ideal	Deviation From Ideal
1	44,146	119	0.3%
2	44,163	136	0.3%
3	44,656	629	1.4%
4	43,060	-968	-2.2%
5	44,035	8	0.0%
6	44,105	78	0.2%

### Total Population by Race/Ethnicity per Ward

Ward	White	Black or African American	American Indian or Alaska Native	Asian	Native Hawaiian and Pacific Islander	Some Other Race	Two or More Races	Hispanic/Latino
1	48.8%	4.2%	0.9%	6.0%	0.8%	0.7%	4.7%	33.9%
2	74.4%	1.6%	0.5%	5.0%	0.2%	0.5%	5.5%	12.3%
3	41.3%	4.8%	0.9%	7.0%	1.2%	0.6%	4.7%	39.3%
4	47.9%	3.0%	0.8%	5.8%	1.2%	0.5%	5.5%	35.2%
5	67.3%	1.8%	0.6%	8.0%	0.6%	0.5%	5.8%	15.5%
6	65.4%	1.8%	0.5%	9.7%	0.4%	0.4%	5.9%	15.9%

2020 Census P.L. 94-171 Redistricting Data Summary Files - Total Population by Race and Hispanic/Latino Origin.



# City of Reno

## Redistricting Summary Statistics – ID 190462 Final Option B1

08/07/2023

### VAP by Race/Ethnicity per Ward

Ward	White	Black or African American	American Indian or Alaska Native	Asian	Native Hawaiian and Pacific Islander	Some Other Race	Two or More Races	Hispanic/Latino
1	54.2%	4.1%	0.8%	6.5%	0.7%	0.7%	4.1%	28.8%
2	76.9%	1.6%	0.6%	5.2%	0.2%	0.5%	4.4%	10.7%
3	46.2%	4.8%	0.9%	7.7%	1.0%	0.7%	4.5%	34.2%
4	52.8%	3.0%	1.0%	6.3%	1.0%	0.5%	4.5%	30.9%
5	70.3%	1.7%	0.6%	8.4%	0.5%	0.5%	4.6%	13.4%
6	68.5%	1.8%	0.5%	9.8%	0.4%	0.4%	4.7%	13.9%

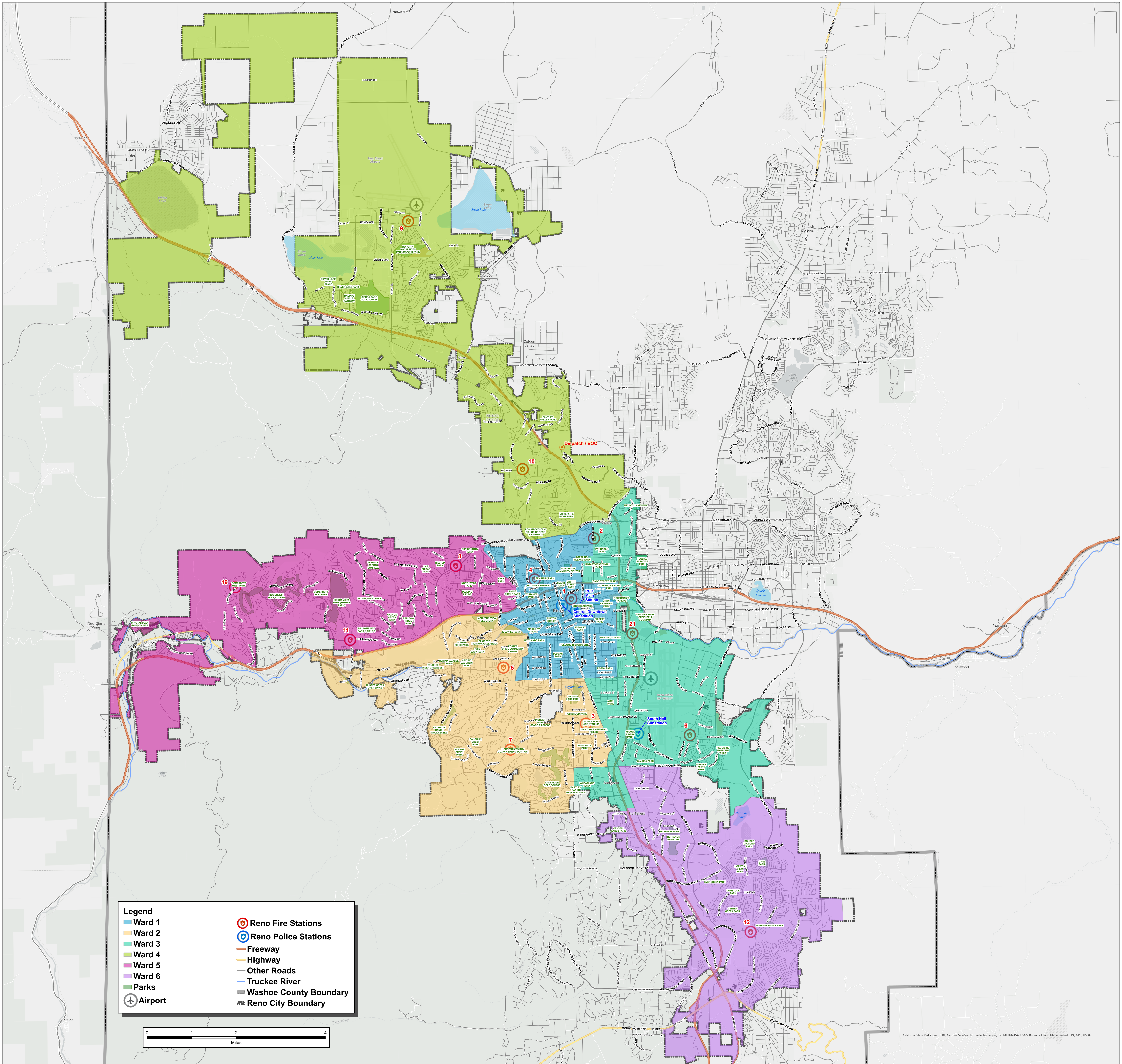
2020 Census P.L 94-171 Redistricting Data Summary Files - Voting-age Population (VAP) by Race and Hispanic/Latino Origin.

### CVAP by Race/Ethnicity per Ward

Ward	White	Black or African American	American Indian or Alaska Native	Asian	Native Hawaiian and Pacific Islander	Two or More Races	Hispanic/Latino
1	64.5%	4.3%	1.2%	6.5%	1.0%	3.1%	19.5%
2	82.1%	2.0%	0.8%	4.9%	0.3%	2.0%	7.9%
3	56.7%	5.0%	1.3%	5.1%	1.3%	2.7%	28.0%
4	64.1%	4.7%	0.6%	4.5%	0.4%	3.5%	22.2%
5	76.3%	2.8%	0.5%	6.6%	0.6%	2.9%	10.3%
6	76.3%	1.3%	1.0%	5.8%	1.2%	2.8%	11.6%

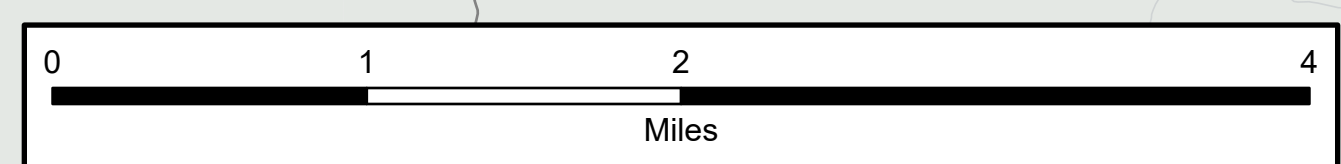
2017-2021 American Community Survey Citizen Voting-age Population (CVAP) by Race and Ethnicity Special Tabulation. Rounding of estimates may lead to summation of race/ethnicity percentages not equal to 100% (+/- 1%).





**Legend**

- Ward 1
- Ward 2
- Ward 3
- Ward 4
- Ward 5
- Ward 6
- Parks
- ✈ Airport
- ⊙ Reno Fire Stations
- ⊙ Reno Police Stations
- Freeway
- Highway
- Other Roads
- Truckee River
- Washoe County Boundary
- Reno City Boundary



# Final Option D.1

## City of Reno Redistricting 2023



# City of Reno

## Redistricting Summary Statistics – ID191915 Final Option D1

08/8/2023

### Equal Population Criterion

Ideal Population	44,028
Overall Deviation	2.2%
<div style="display: flex; justify-content: space-around;"> <span style="background-color: #4CAF50; padding: 2px 10px; border-radius: 5px;">&lt; 5.0%</span> <span style="background-color: #FFEB3B; padding: 2px 10px; border-radius: 5px;">&gt; 5.0%</span> </div>	

2020 Census P.L. 94-171 Redistricting  
Data Summary Files - Total Population.

### Total Population & Deviation per Ward

Ward	Total Population	Over / Under Ideal	Deviation From Ideal
1	44,060	33	0.1%
2	44,164	137	0.3%
3	43,529	-499	-1.1%
4	44,499	472	1.1%
5	44,035	8	0.0%
6	43,878	-150	-0.3%

### Total Population by Race/Ethnicity per Ward

Ward	White	Black or African American	American Indian or Alaska Native	Asian	Native Hawaiian and Pacific Islander	Some Other Race	Two or More Races	Hispanic/Latino
1	58.9%	4.2%	0.9%	6.2%	0.6%	0.7%	5.6%	22.7%
2	69.5%	2.1%	0.5%	5.5%	0.5%	0.5%	5.3%	16.0%
3	35.3%	4.1%	0.9%	6.0%	1.1%	0.4%	3.8%	48.3%
4	48.9%	3.0%	0.8%	6.0%	1.2%	0.5%	5.4%	34.1%
5	67.3%	1.8%	0.6%	8.0%	0.6%	0.5%	5.8%	15.5%
6	65.2%	1.9%	0.5%	9.8%	0.4%	0.4%	6.0%	15.7%

2020 Census P.L. 94-171 Redistricting Data Summary Files - Total Population by Race and Hispanic/Latino Origin.



# City of Reno

## Redistricting Summary Statistics – ID191915 Final Option D1

08/8/2023

### VAP by Race/Ethnicity per Ward

Ward	White	Black or African American	American Indian or Alaska Native	Asian	Native Hawaiian and Pacific Islander	Some Other Race	Two or More Races	Hispanic/Latino
1	62.1%	4.3%	0.9%	6.5%	0.5%	0.7%	5.1%	19.8%
2	73.1%	2.0%	0.6%	5.7%	0.4%	0.5%	4.2%	13.5%
3	40.6%	4.1%	0.9%	6.7%	1.0%	0.5%	3.5%	42.8%
4	53.7%	3.0%	0.9%	6.5%	1.0%	0.5%	4.6%	29.9%
5	70.3%	1.7%	0.6%	8.4%	0.5%	0.5%	4.6%	13.4%
6	68.2%	1.9%	0.6%	10.0%	0.4%	0.4%	4.8%	13.7%

2020 Census P.L 94-171 Redistricting Data Summary Files - Voting-age Population (VAP) by Race and Hispanic/Latino Origin.

### CVAP by Race/Ethnicity per Ward

Ward	White	Black or African American	American Indian or Alaska Native	Asian	Native Hawaiian and Pacific Islander	Two or More Races	Hispanic/Latino
1	69.0%	4.4%	1.2%	5.7%	0.6%	2.6%	16.5%
2	78.8%	2.1%	0.8%	5.3%	0.5%	2.6%	9.9%
3	57.1%	4.5%	1.3%	4.5%	1.2%	2.1%	29.5%
4	64.7%	4.3%	0.7%	4.6%	0.4%	3.3%	21.9%
5	76.3%	2.8%	0.5%	6.6%	0.6%	2.9%	10.3%
6	75.2%	1.5%	0.9%	6.6%	1.5%	3.1%	11.3%

2017-2021 American Community Survey Citizen Voting-age Population (CVAP) by Race and Ethnicity Special Tabulation. Rounding of estimates may lead to summation of race/ethnicity percentages not equal to 100% (+/- 1%).