

# 2023 Redistricting: Final Options

## Community Meeting #3: July 27, 2023



C I T Y O F  
**RENO**

# RENO IS REDISTRICTING

We are going from

5

to

6

wards

Pasaremos de 5 a 6 distritos



## Tonight's Agenda

- Phase 2 feedback summary
- 4 final map options
- How to provide your comments to Council on the final map options
- Questions from you

# View the Final Map Options: Reno.Gov/Redistricting

- PDF – Detailed maps with summary statistics
- Web Application – Allows you to zoom around and look closer
- In Person at City Hall, Redistricting Drop-In Center - Monday, 7/31 @ noon through Wednesday, 8/23, during normal business hours

## Final Map Options

During the first two phases of the redistricting process, you told us about your neighborhoods and communities of interest, commented on six draft scenarios, and proposed your own ward boundaries using the [Districtr mapping tool](#). We revised several of the draft scenarios and turned all of the feedback into four final map options.

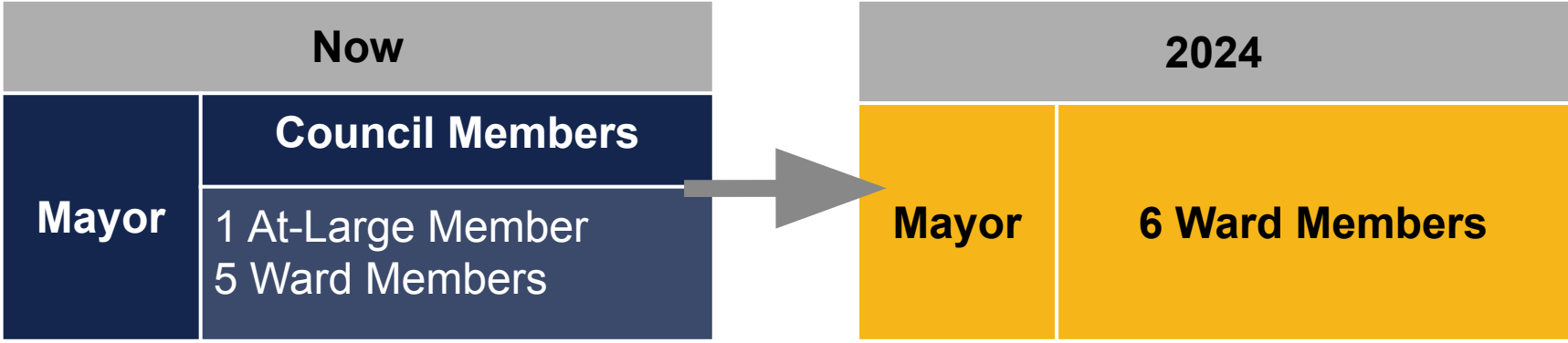
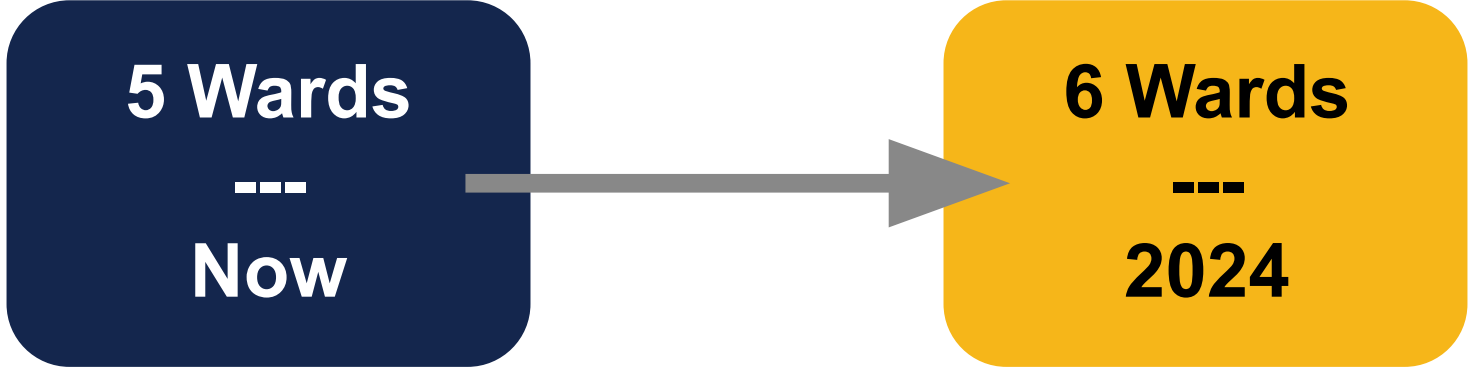
Review the final ward map options below. Summary statistics, including demographic information, is provided with each option.

- [Final Map Option A\\*](#)
- [Final Map Option B\\*](#)
- [Final Map Option C\\*](#)
- [Final Map Option D\\*](#)

\*Use the [redistricting web application](#) for an interactive map that allows you to get a better view of the proposed ward boundaries. You can zoom in and around the better to get a close up view. Click the fourth icon on the left side of the map to select and view the different map options.

# Redistricting:

Process of redrawing the boundaries of the wards that make up the City of Reno



# Ward Transition Timeline: 2024 General Election



Redistricting Process  
May 2023 - August 2023



Maps to Registrar of Voters  
September 1, 2023



Election Preparation  
September 2023 - March 2024



Candidate Filing  
March 2024



General Election  
November 2024



Ward 6 Council Member  
After General Election, 2024

# RENO IS REDISTRICTING

We are going from

**5** to **6** wards

Pasaremos de 5 a 6 distritos



## Public Input Process

**Phase 1: Communities of Interest**

*June 1 - June 22*



**Phase 2: Draft Scenarios (6)**

*June 27 - July 14*



**Phase 3: Final Maps (4)**

*July 27 - August 23*



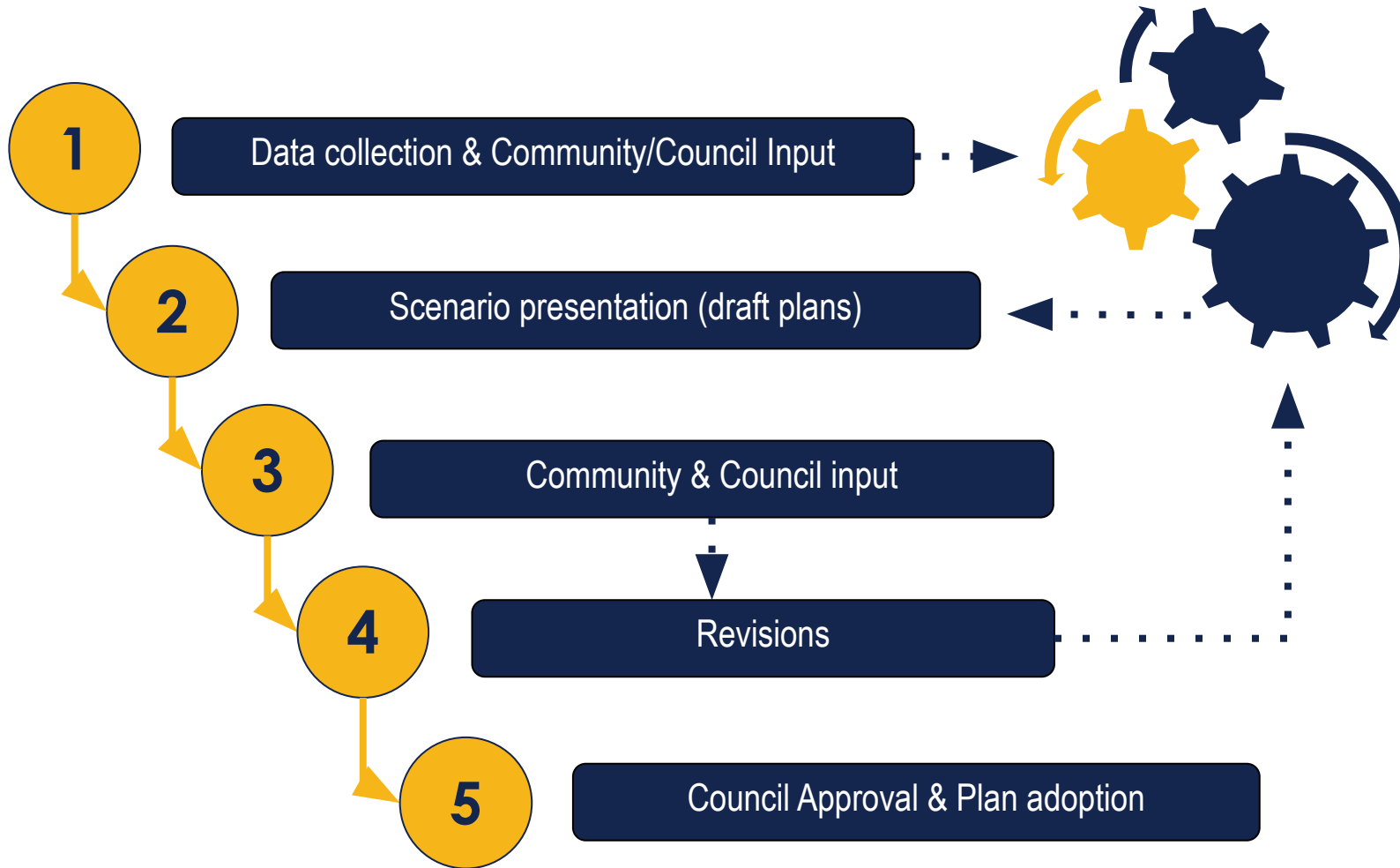


# Phase 2: Input Summary

- Priority for visual compactness of wards
- Downtown perspectives
  - One ward vs multiple wards
  - Which way should downtown “stretch?”
- University
  - Connections to north, south, east, and west
- Looking for entirety/majority of the ward to have similar needs and issues
- Continued comments on communities of interest and neighborhoods

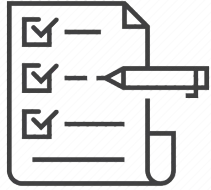
Draft Scenario Survey Ratings Ranked High to Low	
Draft Map	Median Score
Scenario 5	4
Scenario 6	4
Scenario 1	3.5
Scenario 2	2
Scenario 3	1
Scenario 4	1

# The Redistricting Process



This process is designed so that everyone's voice can be heard and the deadline for the new maps can be met.





# Redistricting Principles

## The “Musts”

<b>Must</b> be in compliance with all local, state, and federal laws, including the Voting Rights Act	<b>Must</b> retain current Council members with existing terms that extend beyond the 2024 general election ( <i>Wards 2 &amp; 4</i> )
<b>Must</b> be “nearly equal in population”	<b>Must</b> solicit input from the community
<b>Must</b> be geographically contiguous	The 2020 Census <b>must</b> be used as the data source

## The “Shoulds”

<b>Should</b> preserve neighborhood integrity
<b>Should</b> preserve the use of existing natural boundaries
* <b>Should</b> be as compact as possible



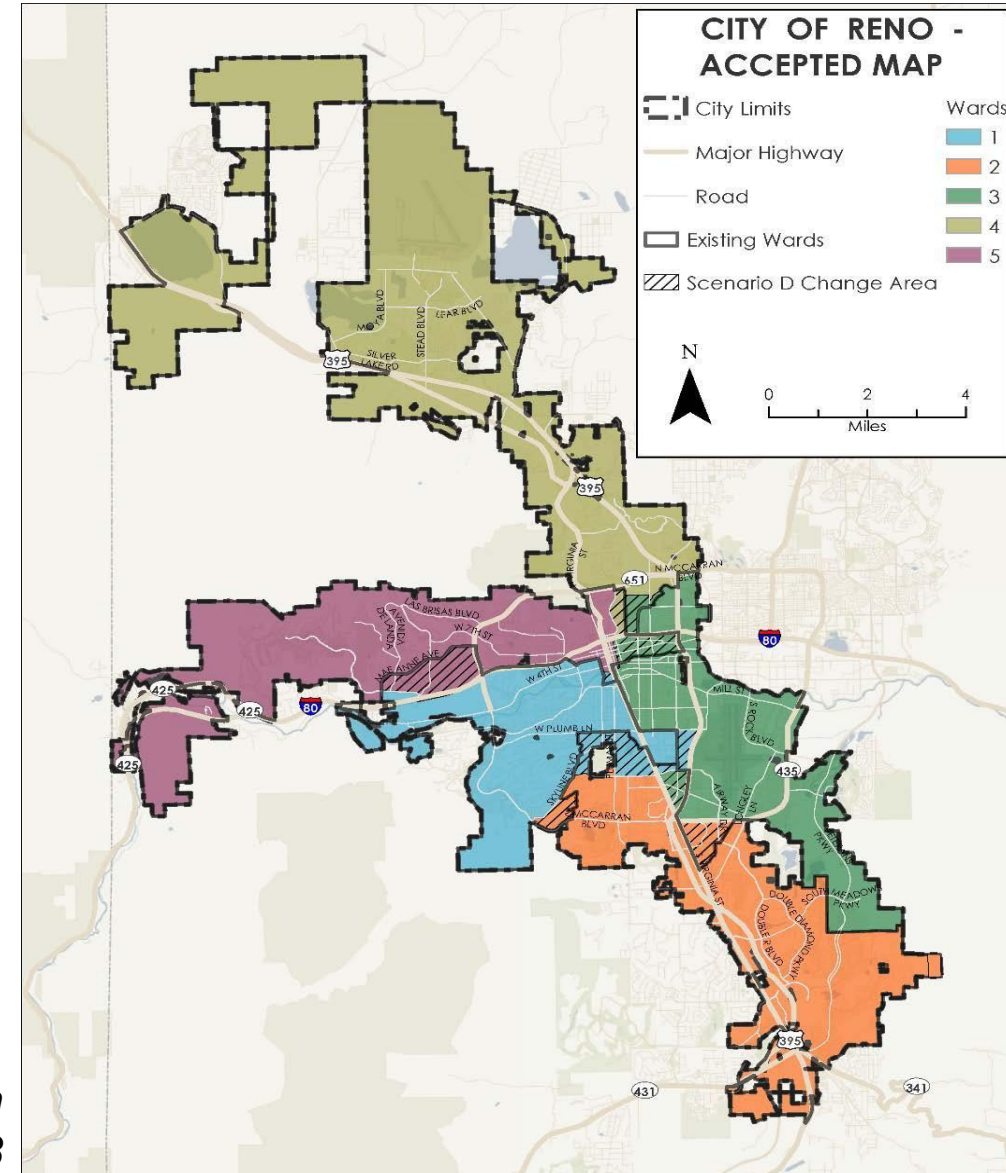
# Redistricting Analysis

**Total City Population: 264,165**

Ideal or "target" ward population to be population balanced

**6 Wards**  
---  
**44,027**

*Ideal ward population with  
5 wards: 53,833*



# Final Option A

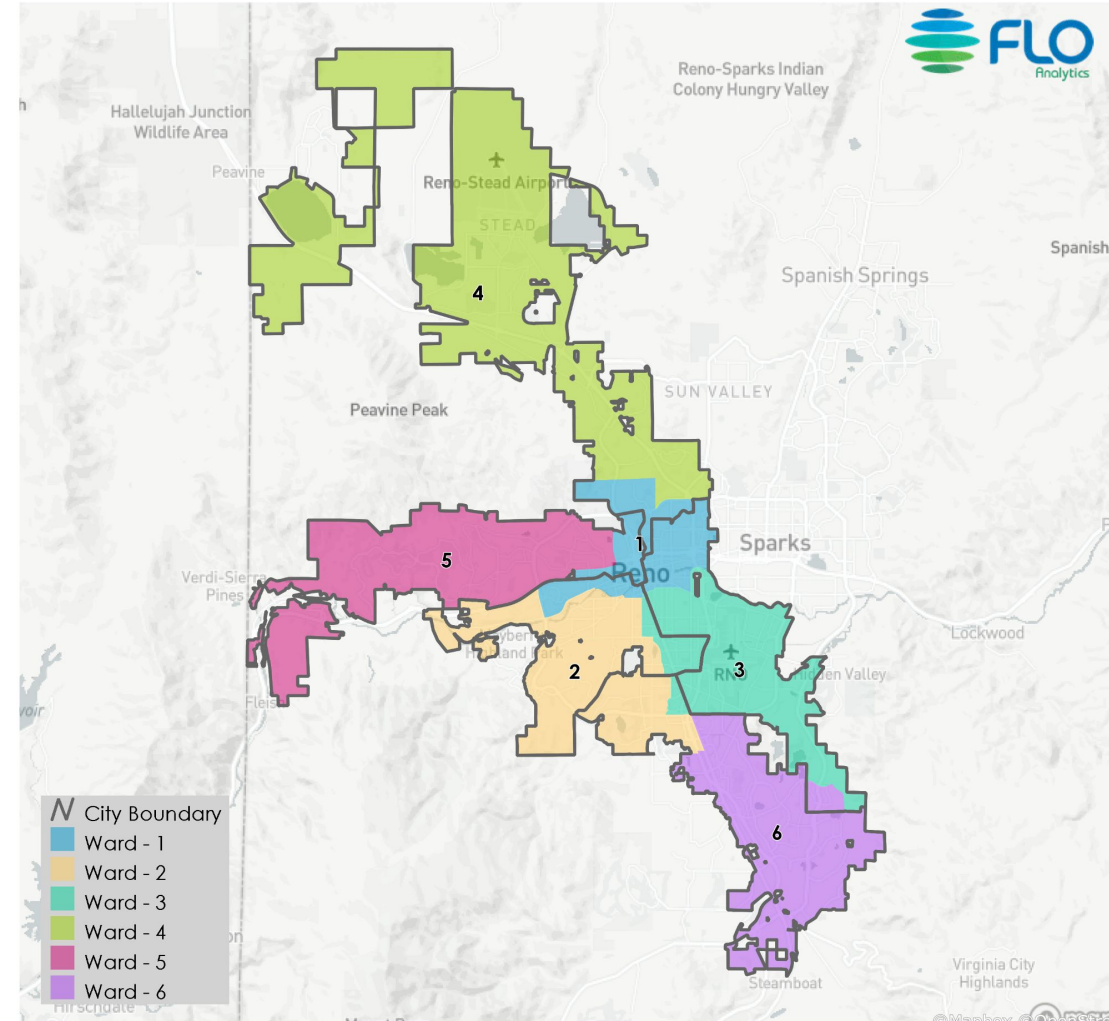
Total Population & Deviation per Ward

**Overall Deviation: 4.9%**

Ward	Total Population	Over / Under Ideal	Deviation From Ideal
1	45,202	1,175	2.7%
2	44,168	141	0.3%
3	43,513	-515	-1.2%
4	43,060	-968	-2.2%
5	44,356	329	0.7%
6	43,866	-162	-0.4%

Total Population by Race/Ethnicity per Ward

Ward	White	Black or African American	American Indian or Alaska Native	Asian	Native Hawaiian and Pacific Islander	Some Other Race	Two or More Races	Hispanic/Latino
1	49.9%	5.4%	1.0%	7.1%	1.1%	0.7%	5.7%	29.0%
2	73.5%	1.6%	0.4%	5.0%	0.4%	0.5%	5.2%	13.4%
3	40.5%	3.4%	0.9%	5.9%	0.8%	0.6%	3.9%	44.1%
4	47.9%	3.0%	0.8%	5.8%	1.2%	0.5%	5.5%	35.2%
5	67.9%	1.8%	0.6%	7.9%	0.5%	0.5%	5.7%	15.1%
6	65.2%	1.9%	0.5%	9.9%	0.4%	0.4%	6.0%	15.7%



# Final Option B

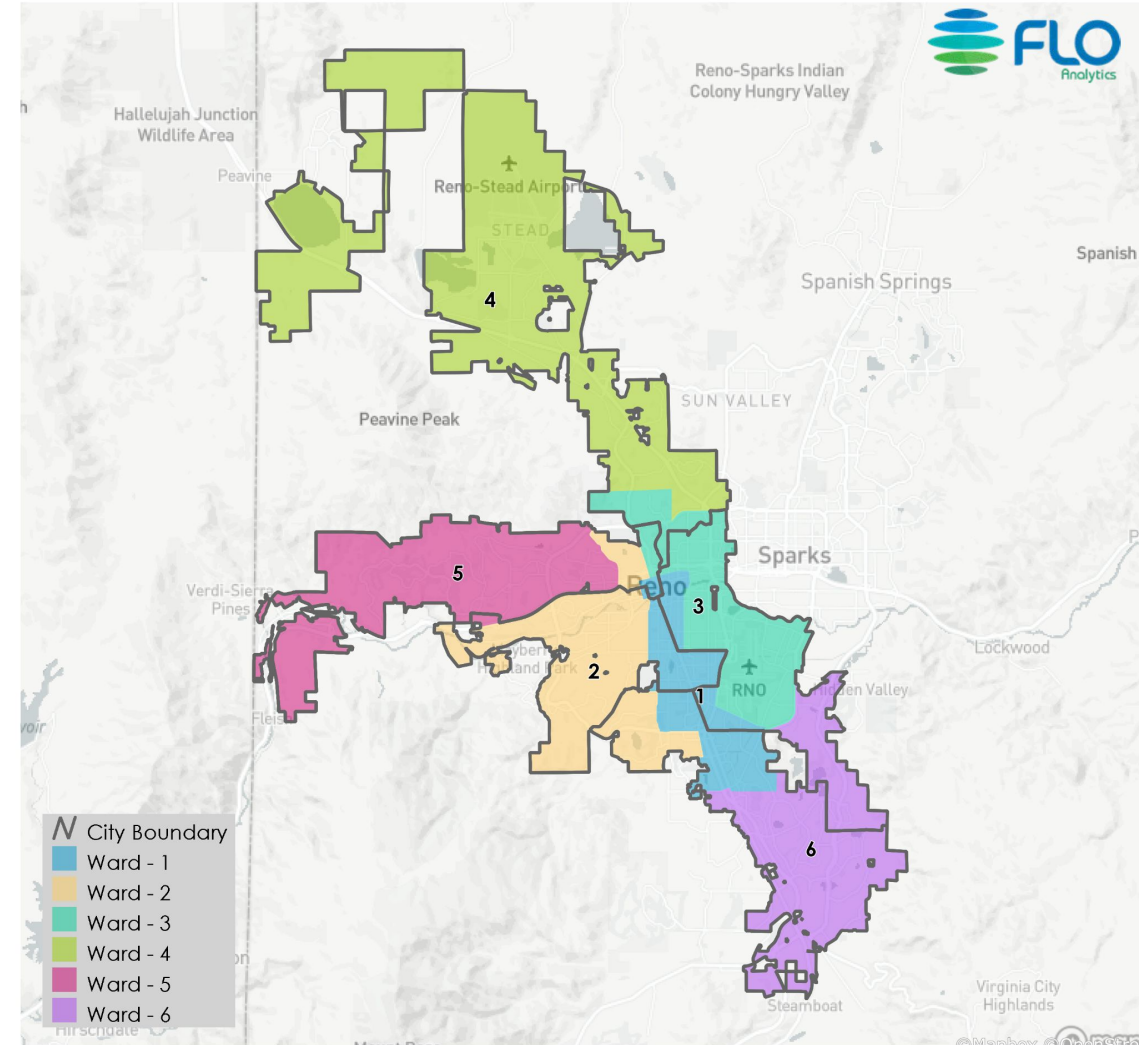
Total Population & Deviation per Ward

Ward	Total Population	Over / Under Ideal	Deviation From Ideal
1	43,903	-125	-0.3%
2	44,163	136	0.3%
3	44,899	872	2.0%
4	43,060	-968	-2.2%
5	44,035	8	0.0%
6	44,105	78	0.2%

**Overall Deviation: 4.2%**

Total Population by Race/Ethnicity per Ward

Ward	White	Black or African American	American Indian or Alaska Native	Asian	Native Hawaiian and Pacific Islander	Some Other Race	Two or More Races	Hispanic/Latino
1	48.7%	4.2%	0.9%	6.0%	0.8%	0.7%	4.7%	34.1%
2	74.4%	1.6%	0.5%	5.0%	0.2%	0.5%	5.5%	12.3%
3	41.5%	4.8%	0.9%	7.0%	1.2%	0.6%	4.7%	39.1%
4	47.9%	3.0%	0.8%	5.8%	1.2%	0.5%	5.5%	35.2%
5	67.3%	1.8%	0.6%	8.0%	0.6%	0.5%	5.8%	15.5%
6	65.4%	1.8%	0.5%	9.7%	0.4%	0.4%	5.9%	15.9%



# Final Option C

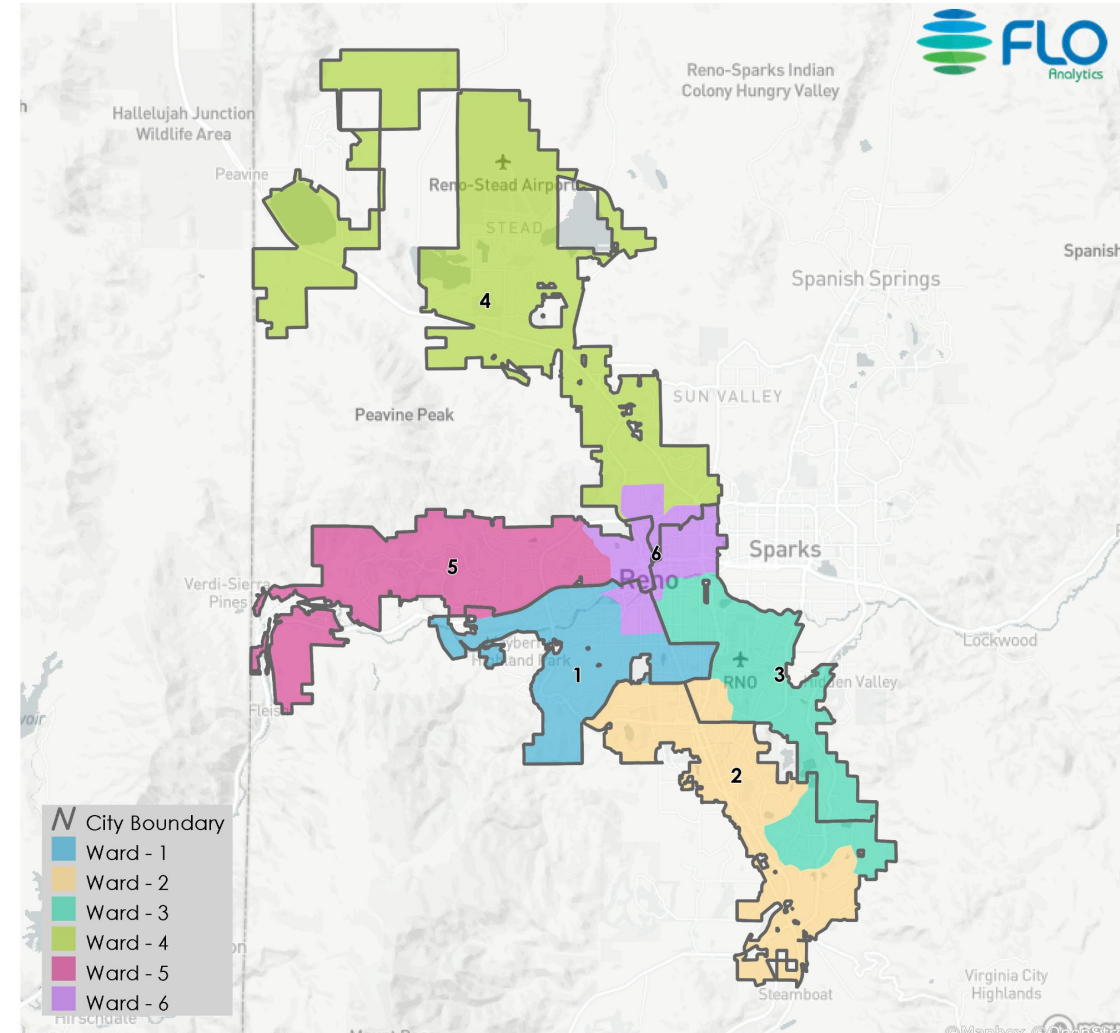
Total Population & Deviation per Ward

Ward	Total Population	Over / Under Ideal	Deviation From Ideal
1	43,859	-169	-0.4%
2	44,816	789	1.8%
3	43,339	-689	-1.6%
4	44,545	518	1.2%
5	44,035	8	0.0%
6	43,571	-457	-1.0%

**Overall Deviation: 3.4%**

Total Population by Race/Ethnicity per Ward

Ward	White	Black or African American	American Indian or Alaska Native	Asian	Native Hawaiian and Pacific Islander	Some Other Race	Two or More Races	Hispanic/Latino
1	60.1%	2.6%	0.6%	4.8%	0.6%	0.5%	4.9%	25.9%
2	58.7%	2.6%	0.6%	7.9%	0.4%	0.5%	5.2%	24.2%
3	58.1%	2.2%	0.7%	8.2%	0.6%	0.6%	5.1%	24.5%
4	48.5%	3.1%	0.9%	5.8%	1.2%	0.5%	5.5%	34.6%
5	67.3%	1.8%	0.6%	8.0%	0.6%	0.5%	5.8%	15.5%
6	52.6%	5.0%	0.9%	6.9%	1.0%	0.6%	5.5%	27.4%



# Final Option D

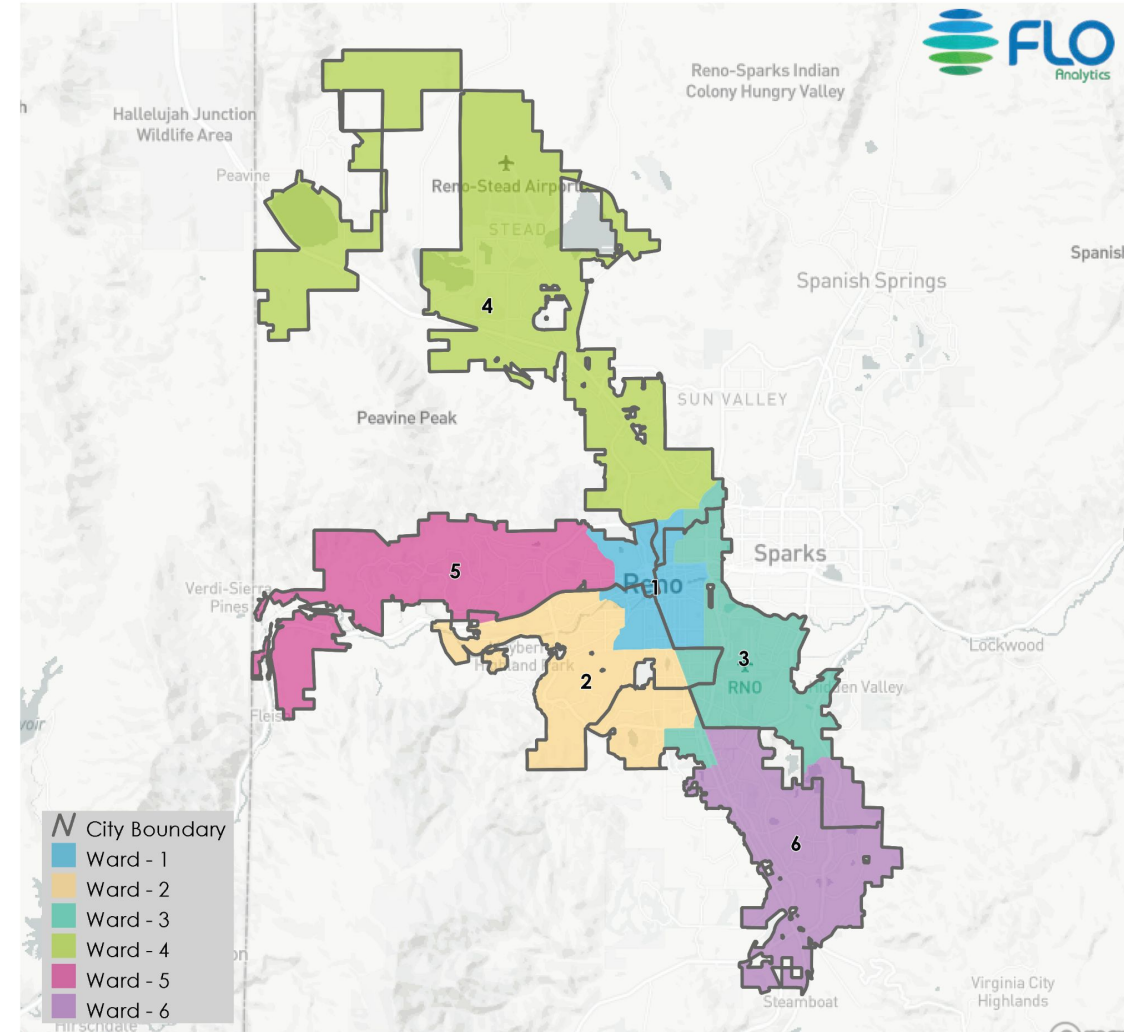
Total Population & Deviation per Ward

Ward	Total Population	Over / Under Ideal	Deviation From Ideal
1	44,060	33	0.1%
2	44,164	137	0.3%
3	43,529	-499	-1.1%
4	44,499	472	1.1%
5	44,035	8	0.0%
6	43,878	-150	-0.3%

**Overall Deviation: 2.2%**

Total Population by Race/Ethnicity per Ward

Ward	White	Black or African American	American Indian or Alaska Native	Asian	Native Hawaiian and Pacific Islander	Some Other Race	Two or More Races	Hispanic/Latino
1	58.9%	4.2%	0.9%	6.2%	0.6%	0.7%	5.6%	22.7%
2	69.5%	2.1%	0.5%	5.5%	0.5%	0.5%	5.3%	16.0%
3	35.3%	4.1%	0.9%	6.0%	1.1%	0.4%	3.8%	48.3%
4	48.9%	3.0%	0.8%	6.0%	1.2%	0.5%	5.4%	34.1%
5	67.3%	1.8%	0.6%	8.0%	0.6%	0.5%	5.8%	15.5%
6	65.2%	1.9%	0.5%	9.8%	0.4%	0.4%	6.0%	15.7%



# RENO IS REDISTRICTING

We are going from  
**5** to **6** wards

Pasaremos de 5 a 6 distritos



## How to Give Your Input



### Final Maps: Public Comment

By 4 p.m. day prior to the Council meeting:

- Online Form:  
[Reno.Gov/PublicComment](https://reno.gov/publiccomment)
- Email [Publiccomment@reno.gov](mailto:Publiccomment@reno.gov)
- Leave a voicemail: 775-393-4499

# RENO IS REDISTRICTING

We are going from  
**5** to **6** wards

Pasaremos de 5 a 6 distritos



## How to Give Your Input



### Final Maps: Public Comment

**At the Council Meeting (In person and Zoom):**

- August 9 (Ordinance Introduction)
- August 23 (Ordinance Adoption)



# Questions Tonight?



If you have a question:

- **In Person:** Come to the microphone
- **Zoom:** Click Raise Hand in the webinar controls
- **Phone:** Dial \*9

We will be notified you would like to speak and will call on those who have indicated they have a question or comment.

- **In Person:** Come to the microphone
- **Zoom:** Hit unmute
- **Phone:** Dial \*6 to unmute

**Limit questions to 2-3 minutes.**

*Questions after the meeting? Email [Redistricting@Reno.Gov](mailto:Redistricting@Reno.Gov) or call 775-334-4636.*