



City Manager's Office

MEMORANDUM

DATE: 7/27/2023

TO: Mayor and City Council

THROUGH: Doug Thornley, City Manager Approved Electronically

FROM: Calli Wilsey, Director of Policy and Strategy

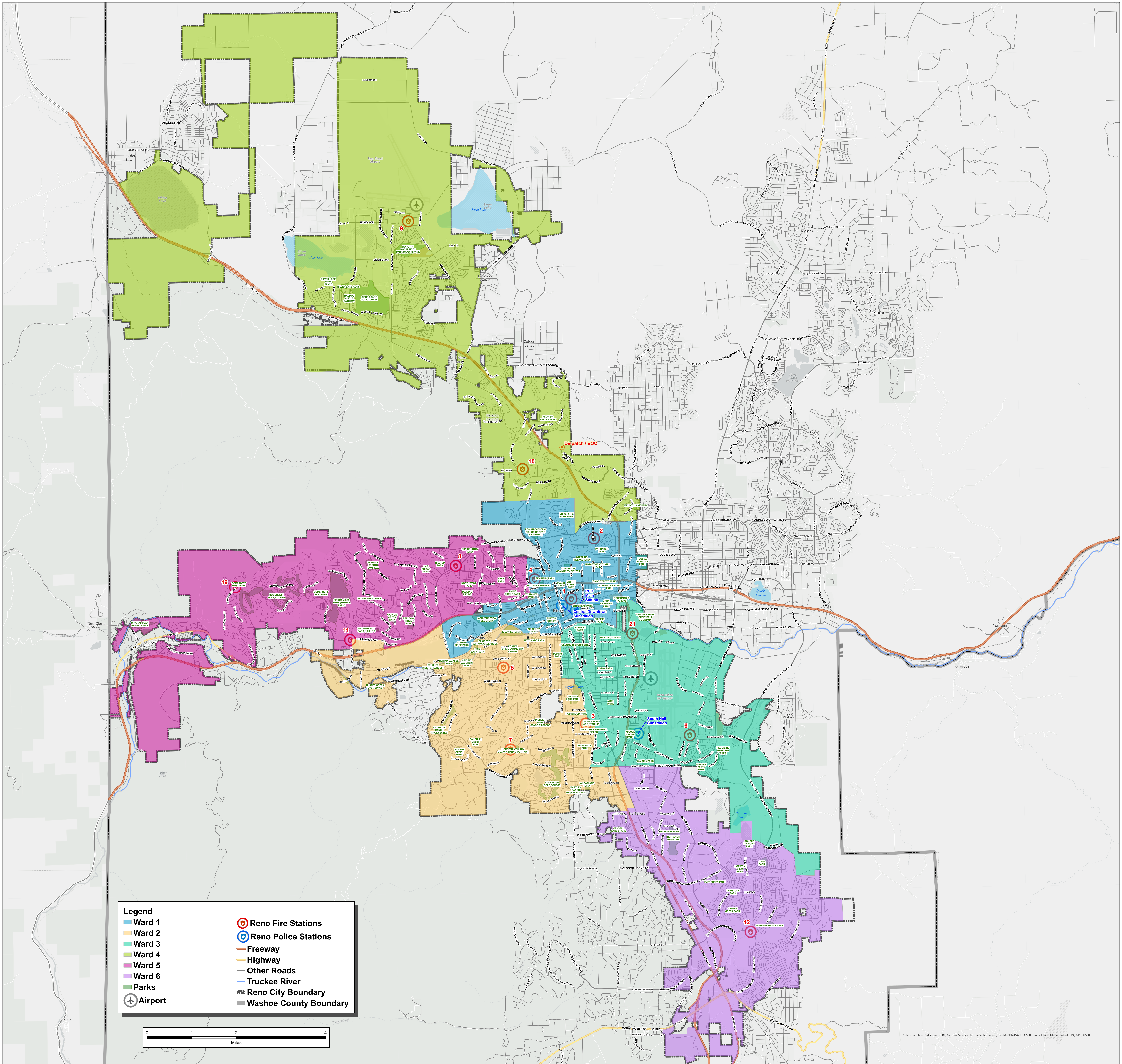
SUBJECT: Redistricting Update – Final Map Options

The 2023 redistricting process is moving into the final phase with the release of four final map options to the community. Staff and FLO Analytics, the independent data analytics firm that is serving as the consultant on the project, will present the maps tonight to the public at the third community meeting in the redistricting process. These four options will be the same maps presented to Council on August 9 for discussion, final selection, and ordinance introduction. Members of the public will be encouraged to continue to participate in the process by submitting public comment for the Council meeting.

The maps, including population and summary statistics, are attached. An interactive tool that allows you to get a better view of the boundaries will be available on [Reno.Gov/Redistricting](https://reno.gov/redistricting) this afternoon in advance of the community meeting. Large format maps will be posted and available for public viewing beginning mid-day on Monday, July 31 in the lobby of City Hall. Large format maps also will be posted in the Council Conference Room to assist Council in preparing for the August 9 item. If you are interested in a briefing on this item in advance of August 9, please notify the Scheduling team.

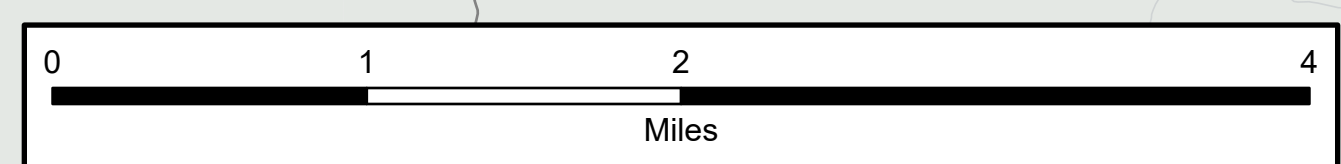
Attachments

- Final Map Option A
- Final Map Option B
- Final Map Option C
- Final Map Option D



Legend

- Ward 1
- Ward 2
- Ward 3
- Ward 4
- Ward 5
- Ward 6
- Airport
- Reno Fire Stations
- Reno Police Stations
- Freeway
- Highway
- Other Roads
- Truckee River
- Reno City Boundary
- Washoe County Boundary



Final Option A

City of Reno Redistricting 2023

City of Reno

Redistricting Summary Statistics – ID190255 Final Option A

07/26/2023

Equal Population Criterion

Ideal Population	44,028
Overall Deviation	4.9%
<div style="display: flex; justify-content: space-between; width: 100%;"> < 5.0% > 5.0% </div>	

Total Population & Deviation per Ward

Ward	Total Population	Over / Under Ideal	Deviation From Ideal
1	45,202	1,175	2.7%
2	44,168	141	0.3%
3	43,513	-515	-1.2%
4	43,060	-968	-2.2%
5	44,356	329	0.7%
6	43,866	-162	-0.4%

2020 Census P.L. 94-171 Redistricting Data Summary Files - Total Population.

Total Population by Race/Ethnicity per Ward

Ward	White	Black or African American	American Indian or Alaska Native	Asian	Native Hawaiian and Pacific Islander	Some Other Race	Two or More Races	Hispanic/Latino
1	49.9%	5.4%	1.0%	7.1%	1.1%	0.7%	5.7%	29.0%
2	73.5%	1.6%	0.4%	5.0%	0.4%	0.5%	5.2%	13.4%
3	40.5%	3.4%	0.9%	5.9%	0.8%	0.6%	3.9%	44.1%
4	47.9%	3.0%	0.8%	5.8%	1.2%	0.5%	5.5%	35.2%
5	67.9%	1.8%	0.6%	7.9%	0.5%	0.5%	5.7%	15.1%
6	65.2%	1.9%	0.5%	9.9%	0.4%	0.4%	6.0%	15.7%

2020 Census P.L. 94-171 Redistricting Data Summary Files - Total Population by Race and Hispanic/Latino Origin.

City of Reno

Redistricting Summary Statistics – ID190255 Final Option A

07/26/2023

VAP by Race/Ethnicity per Ward

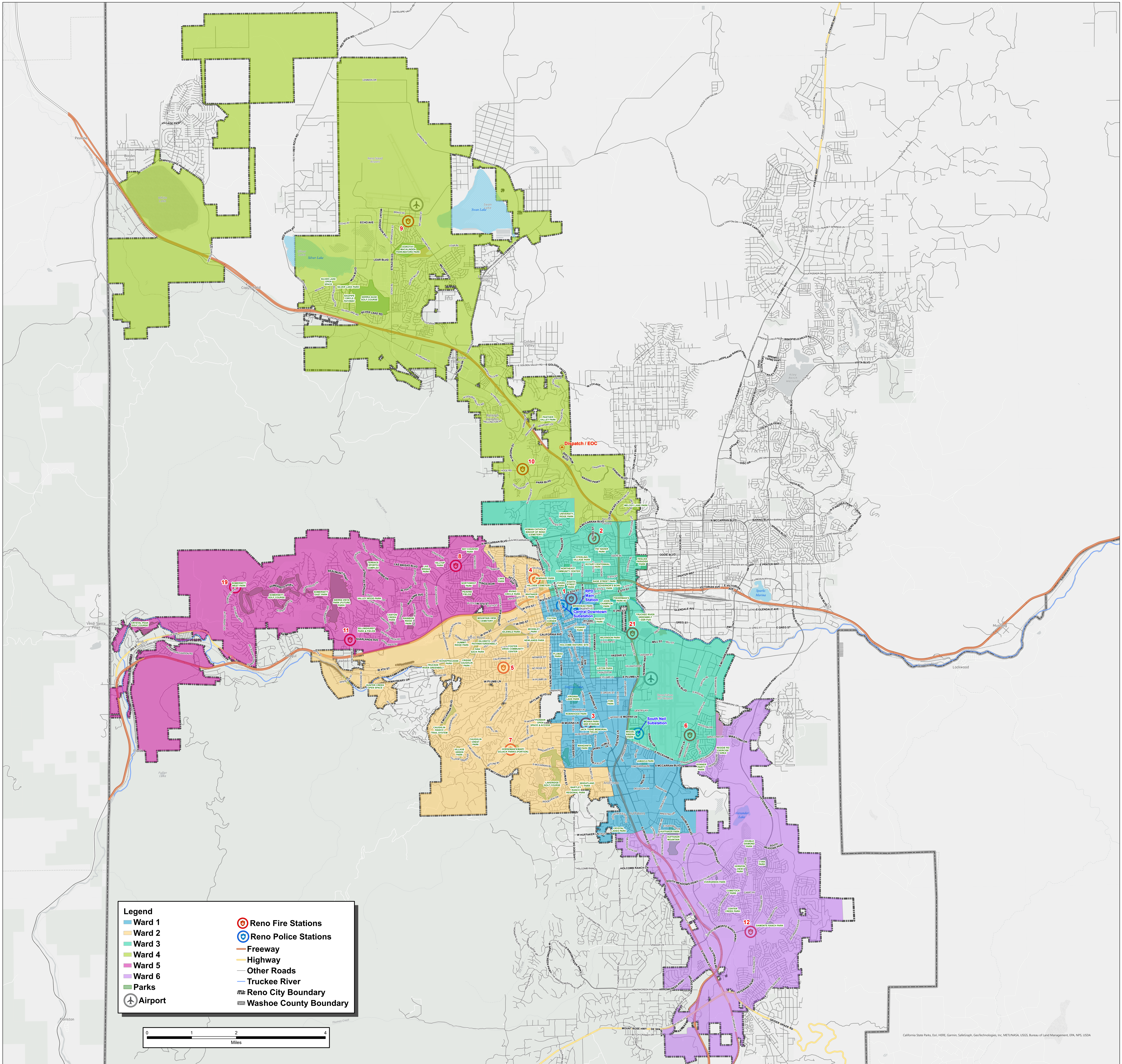
Ward	White	Black or African American	American Indian or Alaska Native	Asian	Native Hawaiian and Pacific Islander	Some Other Race	Two or More Races	Hispanic/Latino
1	54.4%	5.4%	1.0%	7.6%	0.9%	0.7%	5.2%	24.8%
2	76.5%	1.5%	0.5%	5.1%	0.4%	0.5%	4.0%	11.5%
3	45.9%	3.3%	0.9%	6.4%	0.7%	0.6%	3.6%	38.6%
4	52.8%	3.0%	1.0%	6.3%	1.0%	0.5%	4.5%	30.9%
5	70.8%	1.7%	0.6%	8.2%	0.5%	0.5%	4.6%	13.0%
6	68.2%	1.9%	0.6%	10.0%	0.4%	0.4%	4.8%	13.7%

2020 Census P.L 94-171 Redistricting Data Summary Files - Voting-age Population (VAP) by Race and Hispanic/Latino Origin.

CVAP by Race/Ethnicity per Ward

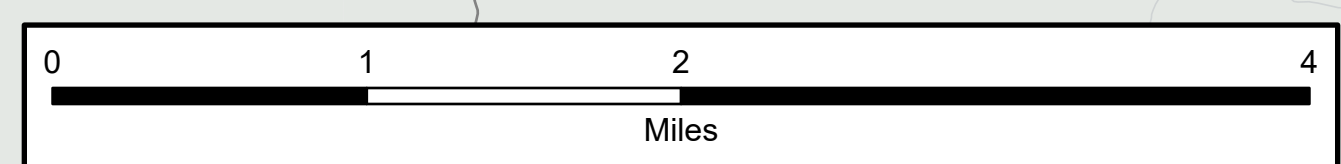
Ward	White	Black or African American	American Indian or Alaska Native	Asian	Native Hawaiian and Pacific Islander	Two or More Races	Hispanic/Latino
1	64.1%	6.0%	1.2%	6.3%	0.8%	2.5%	18.9%
2	81.9%	1.3%	0.7%	4.7%	0.4%	2.3%	8.5%
3	58.9%	3.4%	1.5%	4.8%	0.9%	2.9%	27.7%
4	64.1%	4.7%	0.6%	4.5%	0.4%	3.5%	22.2%
5	76.8%	2.8%	0.5%	6.4%	0.6%	2.7%	10.2%
6	75.2%	1.5%	0.9%	6.6%	1.5%	3.1%	11.3%

2017-2021 American Community Survey Citizen Voting-age Population (CVAP) by Race and Ethnicity Special Tabulation. Rounding of estimates may lead to summation of race/ethnicity percentages not equal to 100% (+/- 1%).



Legend

- Ward 1
- Ward 2
- Ward 3
- Ward 4
- Ward 5
- Ward 6
- Parks
- Airport
- ⊙ Reno Fire Stations
- ⊙ Reno Police Stations
- Freeway
- Highway
- Other Roads
- Truckee River
- Reno City Boundary
- Washoe County Boundary



Final Option B

City of Reno Redistricting 2023

City of Reno

Redistricting Summary Statistics – ID190462 Final Option B

07/26/2023

Equal Population Criterion

Ideal Population	44,028
Overall Deviation	4.2%
<div style="display: flex; justify-content: space-between; width: 100%;"> < 5.0% > 5.0% </div>	

Total Population & Deviation per Ward

Ward	Total Population	Over / Under Ideal	Deviation From Ideal
1	43,903	-125	-0.3%
2	44,163	136	0.3%
3	44,899	872	2.0%
4	43,060	-968	-2.2%
5	44,035	8	0.0%
6	44,105	78	0.2%

2020 Census P.L. 94-171 Redistricting Data Summary Files - Total Population.

Total Population by Race/Ethnicity per Ward

Ward	White	Black or African American	American Indian or Alaska Native	Asian	Native Hawaiian and Pacific Islander	Some Other Race	Two or More Races	Hispanic/Latino
1	48.7%	4.2%	0.9%	6.0%	0.8%	0.7%	4.7%	34.1%
2	74.4%	1.6%	0.5%	5.0%	0.2%	0.5%	5.5%	12.3%
3	41.5%	4.8%	0.9%	7.0%	1.2%	0.6%	4.7%	39.1%
4	47.9%	3.0%	0.8%	5.8%	1.2%	0.5%	5.5%	35.2%
5	67.3%	1.8%	0.6%	8.0%	0.6%	0.5%	5.8%	15.5%
6	65.4%	1.8%	0.5%	9.7%	0.4%	0.4%	5.9%	15.9%

2020 Census P.L. 94-171 Redistricting Data Summary Files - Total Population by Race and Hispanic/Latino Origin.

City of Reno

Redistricting Summary Statistics – ID190462 Final Option B

07/26/2023

VAP by Race/Ethnicity per Ward

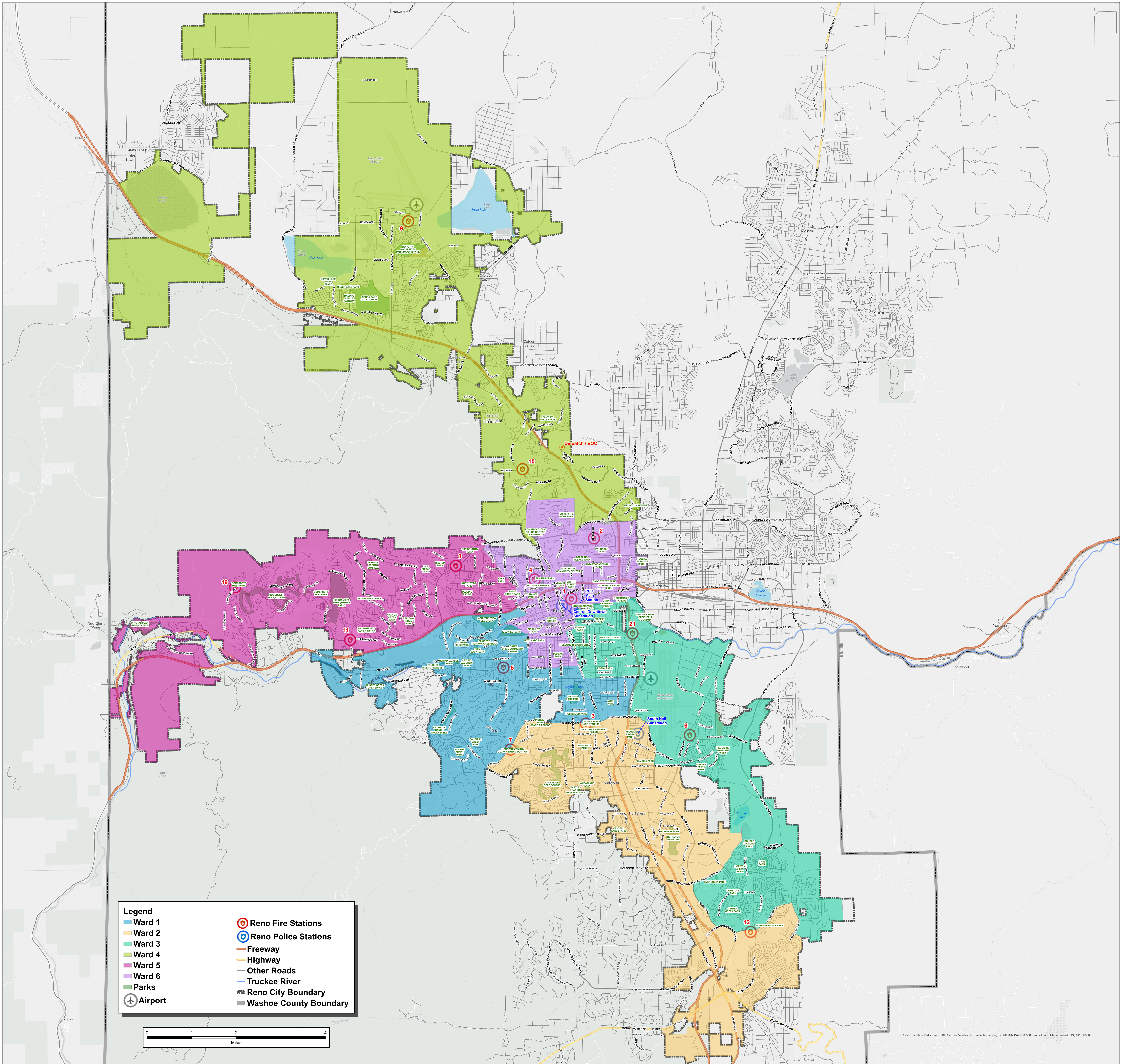
Ward	White	Black or African American	American Indian or Alaska Native	Asian	Native Hawaiian and Pacific Islander	Some Other Race	Two or More Races	Hispanic/Latino
1	54.1%	4.1%	0.9%	6.5%	0.7%	0.7%	4.1%	29.0%
2	76.9%	1.6%	0.6%	5.2%	0.2%	0.5%	4.4%	10.7%
3	46.4%	4.8%	0.9%	7.7%	1.0%	0.7%	4.5%	34.0%
4	52.8%	3.0%	1.0%	6.3%	1.0%	0.5%	4.5%	30.9%
5	70.3%	1.7%	0.6%	8.4%	0.5%	0.5%	4.6%	13.4%
6	68.5%	1.8%	0.5%	9.8%	0.4%	0.4%	4.7%	13.9%

2020 Census P.L 94-171 Redistricting Data Summary Files - Voting-age Population (VAP) by Race and Hispanic/Latino Origin.

CVAP by Race/Ethnicity per Ward

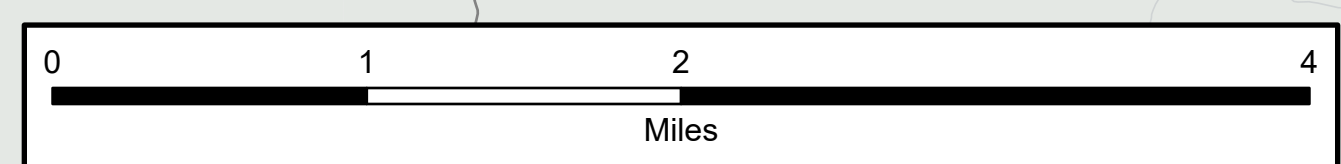
Ward	White	Black or African American	American Indian or Alaska Native	Asian	Native Hawaiian and Pacific Islander	Two or More Races	Hispanic/Latino
1	64.4%	4.3%	1.2%	6.5%	1.0%	3.1%	19.6%
2	82.1%	2.0%	0.8%	4.9%	0.3%	2.0%	7.9%
3	56.9%	4.9%	1.2%	5.1%	1.3%	2.7%	27.8%
4	64.1%	4.7%	0.6%	4.5%	0.4%	3.5%	22.2%
5	76.3%	2.8%	0.5%	6.6%	0.6%	2.9%	10.3%
6	76.3%	1.3%	1.0%	5.8%	1.2%	2.8%	11.6%

2017-2021 American Community Survey Citizen Voting-age Population (CVAP) by Race and Ethnicity Special Tabulation. Rounding of estimates may lead to summation of race/ethnicity percentages not equal to 100% (+/- 1%).



Legend

- Ward 1
- Ward 2
- Ward 3
- Ward 4
- Ward 5
- Ward 6
- Parks
- Airport
- ⊙ Reno Fire Stations
- ⊙ Reno Police Stations
- Freeway
- Highway
- Other Roads
- Truckee River
- Reno City Boundary
- Washoe County Boundary



Final Option C

City of Reno Redistricting 2023

City of Reno

Redistricting Summary Statistics – ID190953 Final Option C

07/26/2023

Equal Population Criterion

Ideal Population	44,028
Overall Deviation	3.4%
< 5.0%	> 5.0%

Total Population & Deviation per Ward

Ward	Total Population	Over / Under Ideal	Deviation From Ideal
1	43,859	-169	-0.4%
2	44,816	789	1.8%
3	43,339	-689	-1.6%
4	44,545	518	1.2%
5	44,035	8	0.0%
6	43,571	-457	-1.0%

2020 Census P.L. 94-171 Redistricting
Data Summary Files - Total Population.

Total Population by Race/Ethnicity per Ward

Ward	White	Black or African American	American Indian or Alaska Native	Asian	Native Hawaiian and Pacific Islander	Some Other Race	Two or More Races	Hispanic/Latino
1	60.1%	2.6%	0.6%	4.8%	0.6%	0.5%	4.9%	25.9%
2	58.7%	2.6%	0.6%	7.9%	0.4%	0.5%	5.2%	24.2%
3	58.1%	2.2%	0.7%	8.2%	0.6%	0.6%	5.1%	24.5%
4	48.5%	3.1%	0.9%	5.8%	1.2%	0.5%	5.5%	34.6%
5	67.3%	1.8%	0.6%	8.0%	0.6%	0.5%	5.8%	15.5%
6	52.6%	5.0%	0.9%	6.9%	1.0%	0.6%	5.5%	27.4%

2020 Census P.L. 94-171 Redistricting Data Summary Files - Total Population by Race and Hispanic/Latino Origin.

City of Reno

Redistricting Summary Statistics – ID190953 Final Option C

07/26/2023

VAP by Race/Ethnicity per Ward

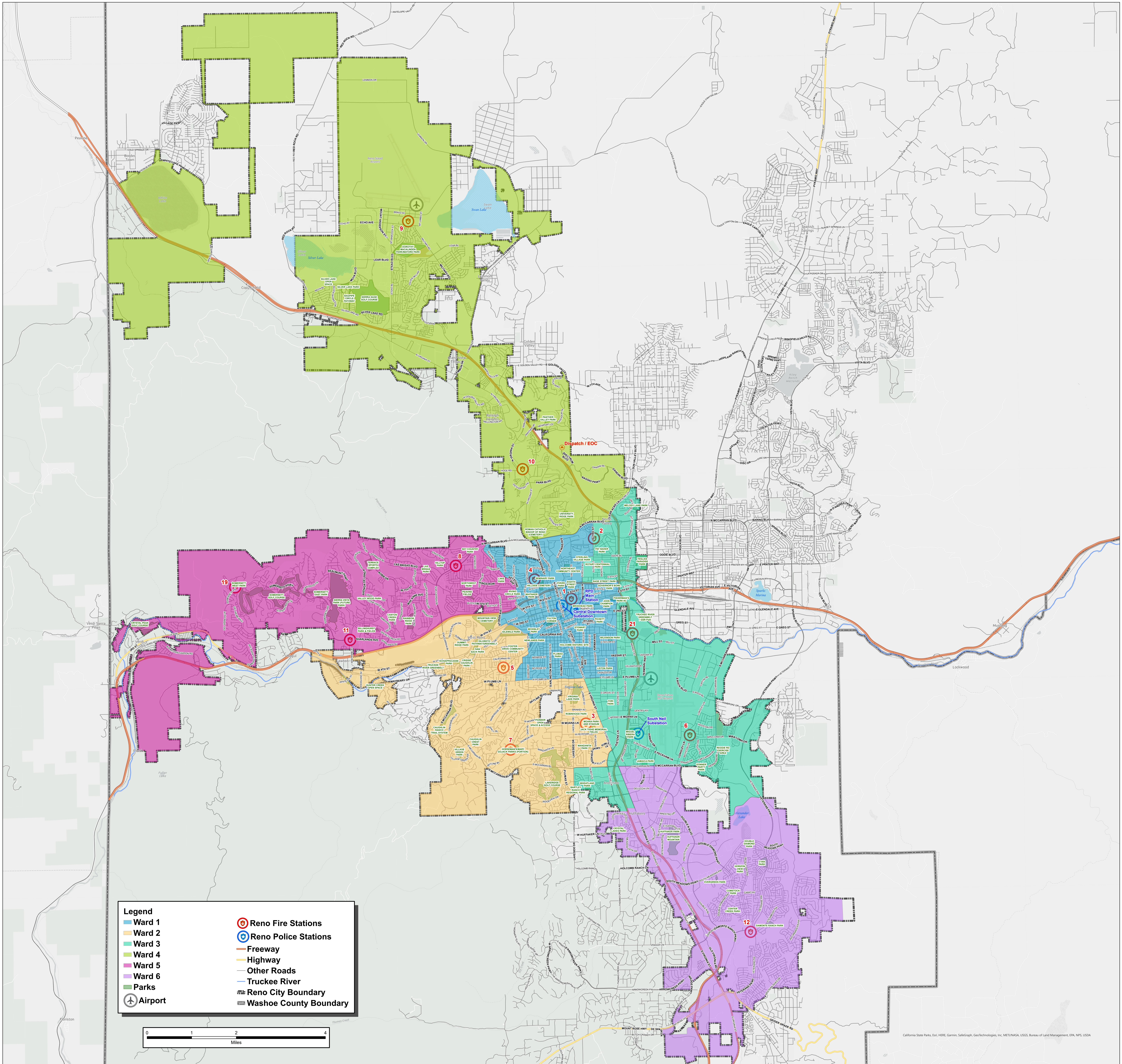
Ward	White	Black or African American	American Indian or Alaska Native	Asian	Native Hawaiian and Pacific Islander	Some Other Race	Two or More Races	Hispanic/Latino
1	64.7%	2.4%	0.6%	5.2%	0.5%	0.5%	4.1%	21.9%
2	62.8%	2.5%	0.6%	8.3%	0.4%	0.5%	4.2%	20.8%
3	61.8%	2.3%	0.7%	8.3%	0.6%	0.6%	4.2%	21.5%
4	53.4%	3.0%	1.0%	6.2%	1.0%	0.4%	4.6%	30.3%
5	70.3%	1.7%	0.6%	8.4%	0.5%	0.5%	4.6%	13.4%
6	56.8%	5.0%	0.9%	7.3%	0.8%	0.6%	5.1%	23.5%

2020 Census P.L 94-171 Redistricting Data Summary Files - Voting-age Population (VAP) by Race and Hispanic/Latino Origin.

CVAP by Race/Ethnicity per Ward

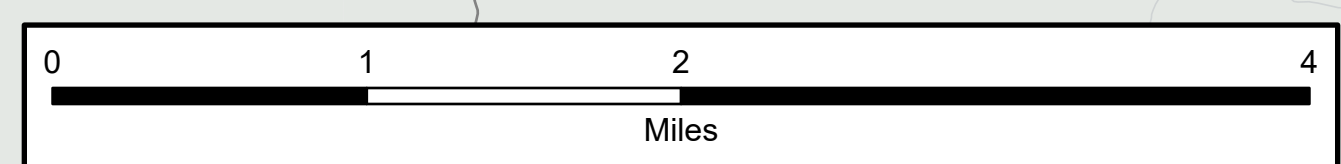
Ward	White	Black or African American	American Indian or Alaska Native	Asian	Native Hawaiian and Pacific Islander	Two or More Races	Hispanic/Latino
1	75.4%	2.8%	0.8%	4.0%	0.6%	2.8%	13.5%
2	71.0%	1.8%	0.7%	6.7%	1.2%	2.8%	15.9%
3	69.8%	2.3%	1.5%	5.7%	1.1%	2.7%	17.0%
4	64.3%	4.5%	0.7%	4.5%	0.4%	3.4%	22.2%
5	76.3%	2.8%	0.5%	6.6%	0.6%	2.9%	10.3%
6	67.1%	5.3%	1.2%	5.7%	0.8%	2.2%	17.8%

2017-2021 American Community Survey Citizen Voting-age Population (CVAP) by Race and Ethnicity Special Tabulation. Rounding of estimates may lead to summation of race/ethnicity percentages not equal to 100% (+/- 1%).



Legend

- Ward 1
- Ward 2
- Ward 3
- Ward 4
- Ward 5
- Ward 6
- Parks
- ⬮ Airport
- ⊙ Reno Fire Stations
- ⊙ Reno Police Stations
- Freeway
- Highway
- Other Roads
- Truckee River
- ⬮ Reno City Boundary
- ⬮ Washoe County Boundary



Final Option D

City of Reno Redistricting 2023

City of Reno

Redistricting Summary Statistics – ID191018 Final Option D

07/26/2023

Equal Population Criterion

Ideal Population	44,028
Overall Deviation	2.2%
<div style="display: flex; justify-content: space-between; width: 100%;"> < 5.0% > 5.0% </div>	

2020 Census P.L. 94-171 Redistricting
Data Summary Files - Total Population.

Total Population & Deviation per Ward

Ward	Total Population	Over / Under Ideal	Deviation From Ideal
1	44,060	33	0.1%
2	44,164	137	0.3%
3	43,529	-499	-1.1%
4	44,499	472	1.1%
5	44,035	8	0.0%
6	43,878	-150	-0.3%

Total Population by Race/Ethnicity per Ward

Ward	White	Black or African American	American Indian or Alaska Native	Asian	Native Hawaiian and Pacific Islander	Some Other Race	Two or More Races	Hispanic/Latino
1	58.9%	4.2%	0.9%	6.2%	0.6%	0.7%	5.6%	22.7%
2	69.5%	2.1%	0.5%	5.5%	0.5%	0.5%	5.3%	16.0%
3	35.3%	4.1%	0.9%	6.0%	1.1%	0.4%	3.8%	48.3%
4	48.9%	3.0%	0.8%	6.0%	1.2%	0.5%	5.4%	34.1%
5	67.3%	1.8%	0.6%	8.0%	0.6%	0.5%	5.8%	15.5%
6	65.2%	1.9%	0.5%	9.8%	0.4%	0.4%	6.0%	15.7%

2020 Census P.L. 94-171 Redistricting Data Summary Files - Total Population by Race and Hispanic/Latino Origin.

City of Reno

Redistricting Summary Statistics – ID191018 Final Option D

07/26/2023

VAP by Race/Ethnicity per Ward

Ward	White	Black or African American	American Indian or Alaska Native	Asian	Native Hawaiian and Pacific Islander	Some Other Race	Two or More Races	Hispanic/Latino
1	62.1%	4.3%	0.9%	6.5%	0.5%	0.7%	5.1%	19.8%
2	73.1%	2.0%	0.6%	5.7%	0.4%	0.5%	4.2%	13.5%
3	40.6%	4.1%	0.9%	6.7%	1.0%	0.5%	3.5%	42.8%
4	53.7%	3.0%	0.9%	6.5%	1.0%	0.5%	4.6%	29.9%
5	70.3%	1.7%	0.6%	8.4%	0.5%	0.5%	4.6%	13.4%
6	68.2%	1.9%	0.6%	10.0%	0.4%	0.4%	4.8%	13.7%

2020 Census P.L 94-171 Redistricting Data Summary Files - Voting-age Population (VAP) by Race and Hispanic/Latino Origin.

CVAP by Race/Ethnicity per Ward

Ward	White	Black or African American	American Indian or Alaska Native	Asian	Native Hawaiian and Pacific Islander	Two or More Races	Hispanic/Latino
1	69.0%	4.4%	1.2%	5.7%	0.6%	2.6%	16.5%
2	78.8%	2.1%	0.8%	5.3%	0.5%	2.6%	9.9%
3	57.1%	4.5%	1.3%	4.5%	1.2%	2.1%	29.5%
4	64.7%	4.3%	0.7%	4.6%	0.4%	3.3%	21.9%
5	76.3%	2.8%	0.5%	6.6%	0.6%	2.9%	10.3%
6	75.2%	1.5%	0.9%	6.6%	1.5%	3.1%	11.3%

2017-2021 American Community Survey Citizen Voting-age Population (CVAP) by Race and Ethnicity Special Tabulation. Rounding of estimates may lead to summation of race/ethnicity percentages not equal to 100% (+/- 1%).