



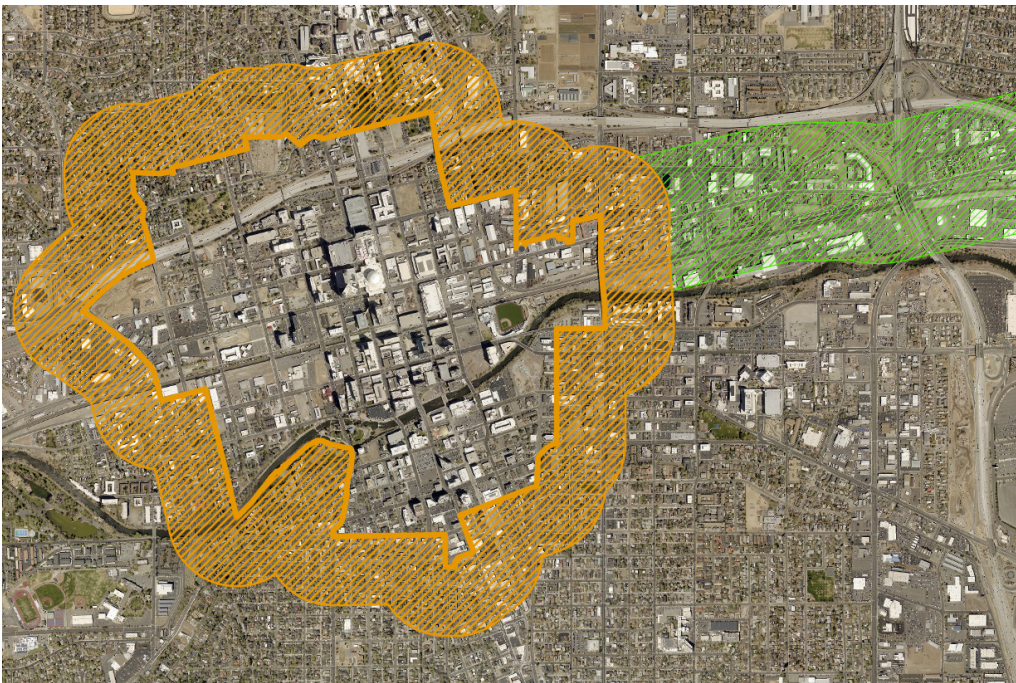
# Downtown Safe Scape Area and Buffer Area Standards

(RMC Sec. 5.07.123)



## Downtown Safe Scape Area and Buffer Area

The Downtown Safe Scape Area standards apply to those businesses located within the orange boundary in the figure below. Those businesses located in the orange and green shaded areas are considered to be in the Downtown Safe Scape Buffer Area. If you need clarification on which standard applies to your business location, please contact the Business Licensing Department at (775) 334-2090.



## Products Offered for Sale (RMC Sec. 5.07.123(c))

### Downtown Safe Scape Area

The sale or distribution of the following is prohibited at all times:

- Wine in containers of less than 750 milliliters.
- Beer, malt liquor, wine coolers, and similar alcoholic beverages in containers of less than 20 ounces not in original factory packages of four-packs or greater.
- Distilled spirits in containers of less than 375 milliliters.
- Paper or plastic cups in quantities less than their usual customary packaging.

### Buffer Area

The sale or distribution of the noted items shall be prohibited between the hours of 8:00 a.m. and 5:00 p.m.

## Noncompliance



2 Violations in 12 months = 30 Day Suspension



3 Violations in 12 months = Revocation of License

## Violations of Safe Scape are Subject to Administrative Fines

In addition to any mandatory suspensions and/or revocations, violations of RMC 5.07.123 are subject to administrative fines as follows:



1<sup>st</sup> Offense



\$100 Fine

2<sup>nd</sup> Offense

\$250 Fine

3<sup>rd</sup> Offense

\$500 Fine

4<sup>th</sup> Offense & Subsequent Offense

\$1,000 Fine





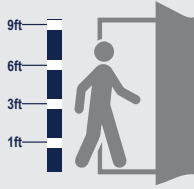
# Downtown Safe Scape Area and Buffer Area Standards

(RMC Sec. 5.07.123)



## Requirements

Height marker at each exit.



No outdoor storage.



No wine in containers of less than 750 milliliters.



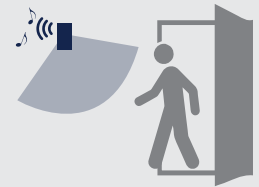
No distilled spirits in containers of less than 375 milliliters.



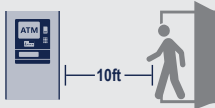
Beer, malt liquor, wine coolers, and similar alcoholic beverages in less than 20 ounce containers cannot be sold unless in factory packaging of four-packs or greater.



Entry detectors.



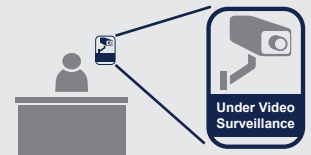
ATM and vending machines should be secured to floor and/or wall and not less than 10 feet from entrance or exit.



Video surveillance cameras. Must maintain video for 24 hours.



"Under video surveillance" sign displayed.



No obstruction of more than 25% of the windows.



Existing glass coverage on storefront shall not be reduced or eliminated.



No outdoor merchandise/displays between the building and the adjacent right-of-way.



Window and facade security. *(When applicable)*

Metal bars or gates on windows, shall be located on the interior side of the window.

Door security. *(When applicable)*

Metal accordion gate or grill-type doors, shall be located within the building interior. Secured doors shall be equipped with metal guides tracks at top and bottom, and a cylinder lock and/or padlock. The bottom track shall be so designed that the door cannot be lifted from the track when the door is in a locked position.



Fresh or Frozen Perishable Food.



At least ten percent (10%) of the retail floor space must be dedicated to fresh or frozen perishable foods. Fresh or frozen perishable food means those foods likely to spoil, decay, or become unsafe to consume if not kept refrigerated or frozen. Examples of foods that must be kept refrigerated for safety include, but are not limited to, fruits, vegetables, egg, meat, poultry, seafood, and dairy products. Fresh food may also include foods that have extended expiration dates, including but not limited to, fruits and vegetables not requiring refrigeration, canned food, condiments, dried meat and bakery items.

