



# City Manager's Office

---

## MEMORANDUM

**DATE:** 6/27/2023

**TO:** Mayor and City Council

**THROUGH:** Doug Thornley, City Manager **Approved Electronically**

**FROM:** Calli Wilsey, Director of Policy and Strategy

**SUBJECT:** Redistricting Update – Draft Map Scenarios 1-6

---

The 2023 redistricting process is moving into the second phase with the release of six draft maps to the community. Each scenario includes population and demographic summary statistics. The maps, along with an interactive online tool that allows you to get a better view of the draft boundaries, will be available on [Reno.Gov/Redistricting](https://Reno.Gov/Redistricting) this afternoon in advance of the second community meeting. The draft scenarios are attached for reference

The community will be able to provide their feedback on the draft scenarios through July 14. Following that deadline, staff and the consultant team will prepare final map options that will be presented to the community on July 27 and to Council in August.

### Community Input Opportunities

The community will have multiple opportunities to view the draft scenarios and provide feedback, including:

- Sharing their thoughts through an online survey;
- Proposing changes to the draft scenarios through Districtr, an online mapping tool that allows individuals to submit their own maps;
- Attending a redistricting drop-in session;
- Emailing [Redistricting@Reno.Gov](mailto:Redistricting@Reno.Gov); or
- Calling 775-334-4636.

## Drop-In Session Schedule

Staff will be hosting a series of drop-in sessions for members of the public to review the draft scenarios in person and provide feedback. During these sessions, community members can arrive at any point during the scheduled time; staff will be on site to answer questions. The drop-in sessions are scheduled at various locations and different times of the day to accommodate community needs. The schedule is as follows:

- June 28:
  - McKinley Arts and Culture Center, 4 - 6 p.m.
- July 10:
  - North Valleys Community Center, Noon - 2 p.m.
- July 11:
  - City of Reno Fire Station 11, 4:30 - 6:30 p.m.
- July 12:
  - South Valleys Library, 12:30 - 2:30 p.m.
  - Paradise Park, 4 - 6 p.m.

Spanish assistance will be available at the drop-in sessions. Support in American Sign Language will be available at the South Valleys Library session.

The community will also be able to view the maps at Reno City Hall between June 29 and July 14 at the redistricting drop-in center. Large printed maps will be posted in the lobby on the first floor of City Hall. The center will be open to the public during normal business hours. Reno staff will not be at the table full time. While not necessary to participate, community members who would like to meet with staff at the City Hall drop-in center can schedule an appointment by emailing [Redistricting@Reno.Gov](mailto:Redistricting@Reno.Gov).

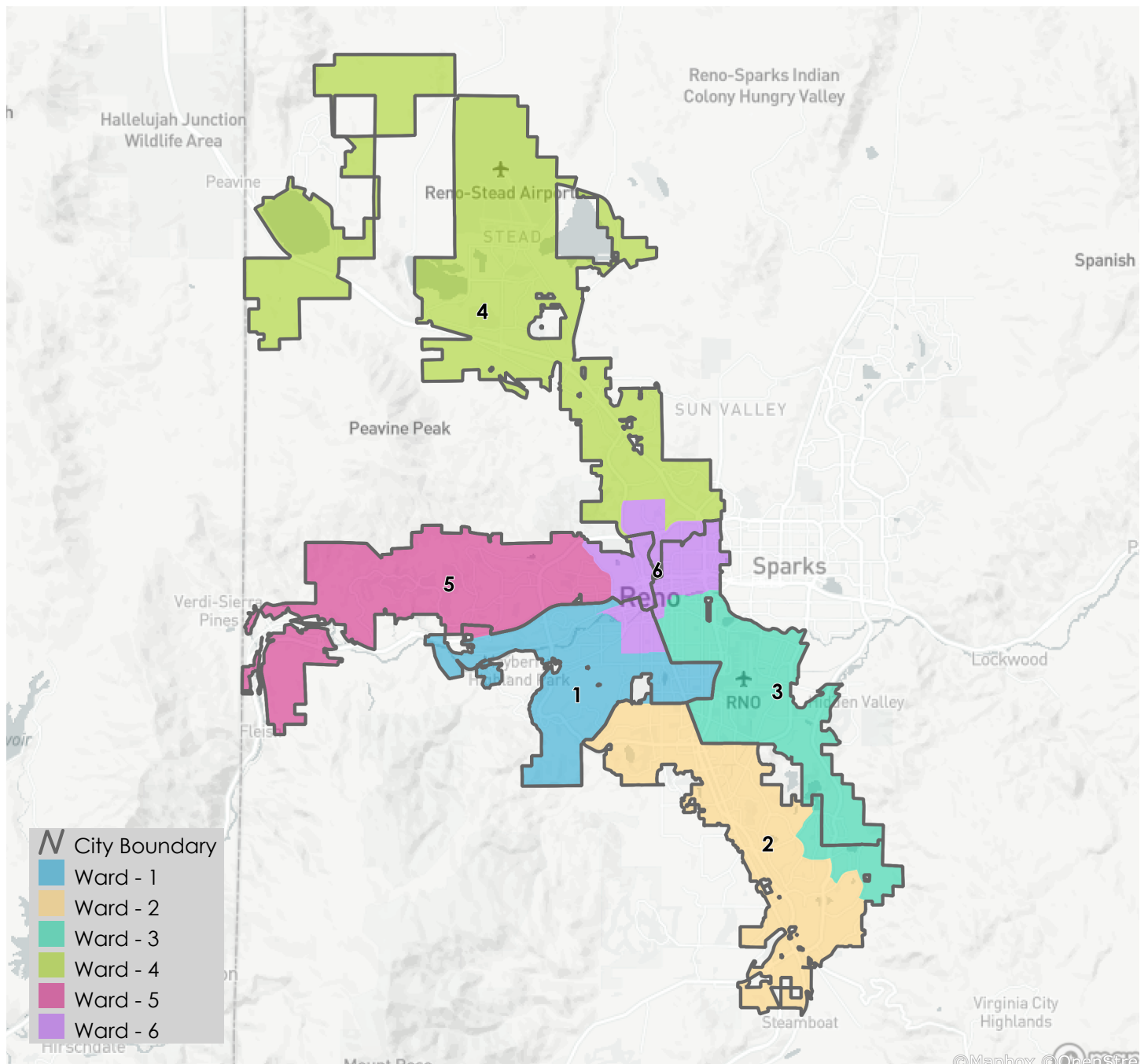
### Attachments:

- Draft Scenario 1
- Draft Scenario 2
- Draft Scenario 3
- Draft Scenario 4
- Draft Scenario 5
- Draft Scenario 6

# City of Reno

## Redistricting Summary Statistics – Draft Scenario 1

06/26/2023



# City of Reno

## Redistricting Summary Statistics – Draft Scenario 1

06/26/2023

### Equal Population Criterion

Ideal Population	44,028
Overall Deviation	2.2%
< 5.0%	> 5.0%

2020 Census P.L. 94-171 Redistricting  
Data Summary Files - Total Population.

### Total Population & Deviation per Ward

Ward	Total Population	Over / Under Ideal	Deviation From Ideal
1	43,859	-169	-0.4%
2	43,700	-328	-0.7%
3	44,455	428	1.0%
4	44,545	518	1.2%
5	44,035	8	0.0%
6	43,571	-457	-1.0%

### Total Population by Race/Ethnicity per Ward

Ward	White	Black or African American	American Indian or Alaska Native	Asian	Native Hawaiian and Pacific Islander	Some Other Race	Two or More Races	Hispanic/Latino
1	60.1%	2.6%	0.6%	4.8%	0.6%	0.5%	4.9%	25.9%
2	66.8%	2.0%	0.5%	8.5%	0.4%	0.5%	5.6%	15.7%
3	50.2%	2.8%	0.8%	7.6%	0.6%	0.6%	4.6%	32.8%
4	48.5%	3.1%	0.9%	5.8%	1.2%	0.5%	5.5%	34.6%
5	67.3%	1.8%	0.6%	8.0%	0.6%	0.5%	5.8%	15.5%
6	52.6%	5.0%	0.9%	6.9%	1.0%	0.6%	5.5%	27.4%

2020 Census P.L. 94-171 Redistricting Data Summary Files - Total Population by Race and Hispanic/Latino Origin.

# City of Reno

## Redistricting Summary Statistics – Draft Scenario 1

06/26/2023

### VAP by Race/Ethnicity per Ward

Ward	White	Black or African American	American Indian or Alaska Native	Asian	Native Hawaiian and Pacific Islander	Some Other Race	Two or More Races	Hispanic/Latino
1	64.7%	2.4%	0.6%	5.2%	0.5%	0.5%	4.1%	21.9%
2	69.9%	2.0%	0.6%	8.7%	0.4%	0.4%	4.5%	13.6%
3	54.7%	2.8%	0.8%	7.9%	0.6%	0.6%	4.0%	28.7%
4	53.4%	3.0%	1.0%	6.2%	1.0%	0.4%	4.6%	30.3%
5	70.3%	1.7%	0.6%	8.4%	0.5%	0.5%	4.6%	13.4%
6	56.8%	5.0%	0.9%	7.3%	0.8%	0.6%	5.1%	23.5%

2020 Census P.L 94-171 Redistricting Data Summary Files - Voting-age Population (VAP) by Race and Hispanic/Latino Origin.

### CVAP by Race/Ethnicity per Ward

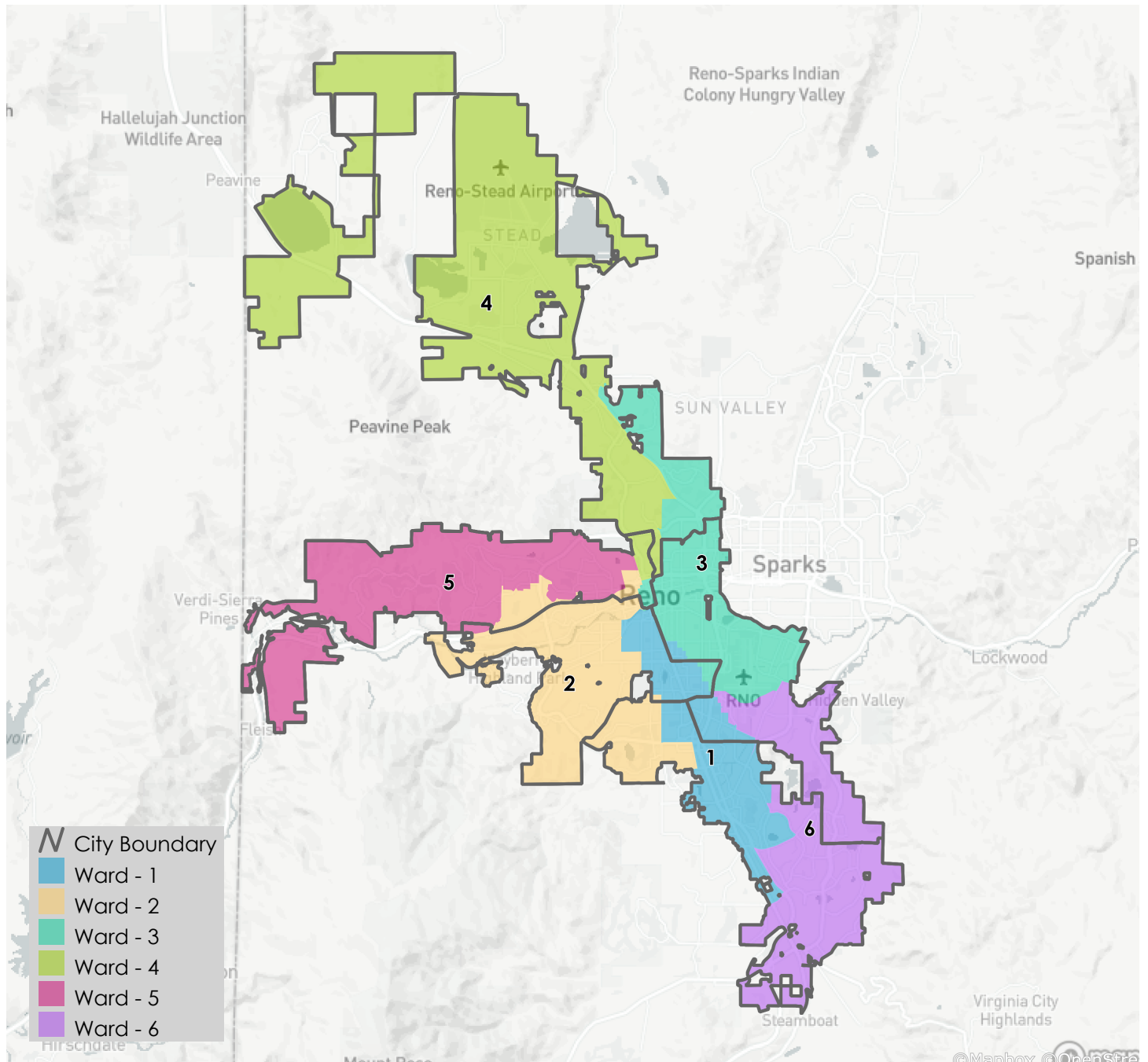
Ward	White	Black or African American	American Indian or Alaska Native	Asian	Native Hawaiian and Pacific Islander	Two or More Races	Hispanic/Latino
1	75.4%	2.8%	0.8%	4.0%	0.6%	2.8%	13.5%
2	76.7%	1.6%	0.8%	6.5%	1.2%	2.9%	10.4%
3	63.9%	2.5%	1.4%	5.9%	1.1%	2.6%	22.7%
4	64.3%	4.5%	0.7%	4.5%	0.4%	3.4%	22.2%
5	76.3%	2.8%	0.5%	6.6%	0.6%	2.9%	10.3%
6	67.1%	5.3%	1.2%	5.7%	0.8%	2.2%	17.8%

2017-2021 American Community Survey Citizen Voting-age Population (CVAP) by Race and Ethnicity Special Tabulation. Rounding of estimates may lead to summation of race/ethnicity percentages not equal to 100% (+/- 1%).

# City of Reno

## Redistricting Summary Statistics – Draft Scenario 2

06/26/2023



# City of Reno

## Redistricting Summary Statistics – Draft Scenario 2

06/26/2023

### Equal Population Criterion

Ideal Population	44,028
Overall Deviation	1.5%
<div style="display: flex; justify-content: space-between; width: 100%;"> <span style="background-color: #4CAF50; color: white; padding: 2px 5px;">&lt; 5.0%</span> <span style="background-color: #FFEB3B; color: black; padding: 2px 5px;">&gt; 5.0%</span> </div>	

2020 Census P.L. 94-171 Redistricting  
Data Summary Files - Total Population.

### Total Population & Deviation per Ward

Ward	Total Population	Over / Under Ideal	Deviation From Ideal
1	44,122	95	0.2%
2	44,183	156	0.4%
3	44,109	82	0.2%
4	44,080	53	0.1%
5	44,146	119	0.3%
6	43,525	-503	-1.1%

### Total Population by Race/Ethnicity per Ward

Ward	White	Black or African American	American Indian or Alaska Native	Asian	Native Hawaiian and Pacific Islander	Some Other Race	Two or More Races	Hispanic/Latino
1	47.6%	3.8%	0.8%	6.3%	0.7%	0.5%	4.7%	35.6%
2	72.5%	1.8%	0.6%	5.4%	0.3%	0.5%	5.4%	13.5%
3	43.7%	5.1%	1.0%	6.1%	1.3%	0.7%	4.7%	37.3%
4	49.6%	3.3%	0.8%	6.8%	1.1%	0.5%	5.8%	32.1%
5	68.2%	1.7%	0.6%	7.8%	0.5%	0.5%	5.8%	14.9%
6	63.6%	1.5%	0.5%	9.3%	0.4%	0.4%	5.6%	18.6%

2020 Census P.L. 94-171 Redistricting Data Summary Files - Total Population by Race and Hispanic/Latino Origin.

# City of Reno

## Redistricting Summary Statistics – Draft Scenario 2

06/26/2023

### VAP by Race/Ethnicity per Ward

Ward	White	Black or African American	American Indian or Alaska Native	Asian	Native Hawaiian and Pacific Islander	Some Other Race	Two or More Races	Hispanic/Latino
1	53.2%	3.5%	0.7%	6.8%	0.7%	0.6%	4.0%	30.6%
2	75.4%	1.8%	0.6%	5.5%	0.2%	0.5%	4.2%	11.7%
3	48.9%	5.1%	1.1%	6.6%	1.1%	0.8%	4.3%	32.1%
4	54.0%	3.4%	0.9%	7.3%	0.9%	0.5%	5.0%	28.0%
5	71.1%	1.7%	0.6%	8.1%	0.5%	0.5%	4.7%	12.9%
6	66.8%	1.5%	0.6%	9.4%	0.4%	0.4%	4.6%	16.3%

2020 Census P.L 94-171 Redistricting Data Summary Files - Voting-age Population (VAP) by Race and Hispanic/Latino Origin.

### CVAP by Race/Ethnicity per Ward

Ward	White	Black or African American	American Indian or Alaska Native	Asian	Native Hawaiian and Pacific Islander	Two or More Races	Hispanic/Latino
1	64.6%	2.9%	0.7%	6.2%	0.9%	2.6%	22.1%
2	80.4%	2.1%	0.8%	5.2%	0.4%	2.3%	8.8%
3	58.5%	7.2%	1.6%	5.2%	1.2%	3.3%	23.1%
4	65.1%	3.8%	0.7%	4.7%	0.5%	3.0%	22.2%
5	77.4%	2.7%	0.6%	6.4%	0.5%	2.8%	9.7%
6	75.2%	1.1%	1.0%	5.7%	1.3%	2.8%	12.8%

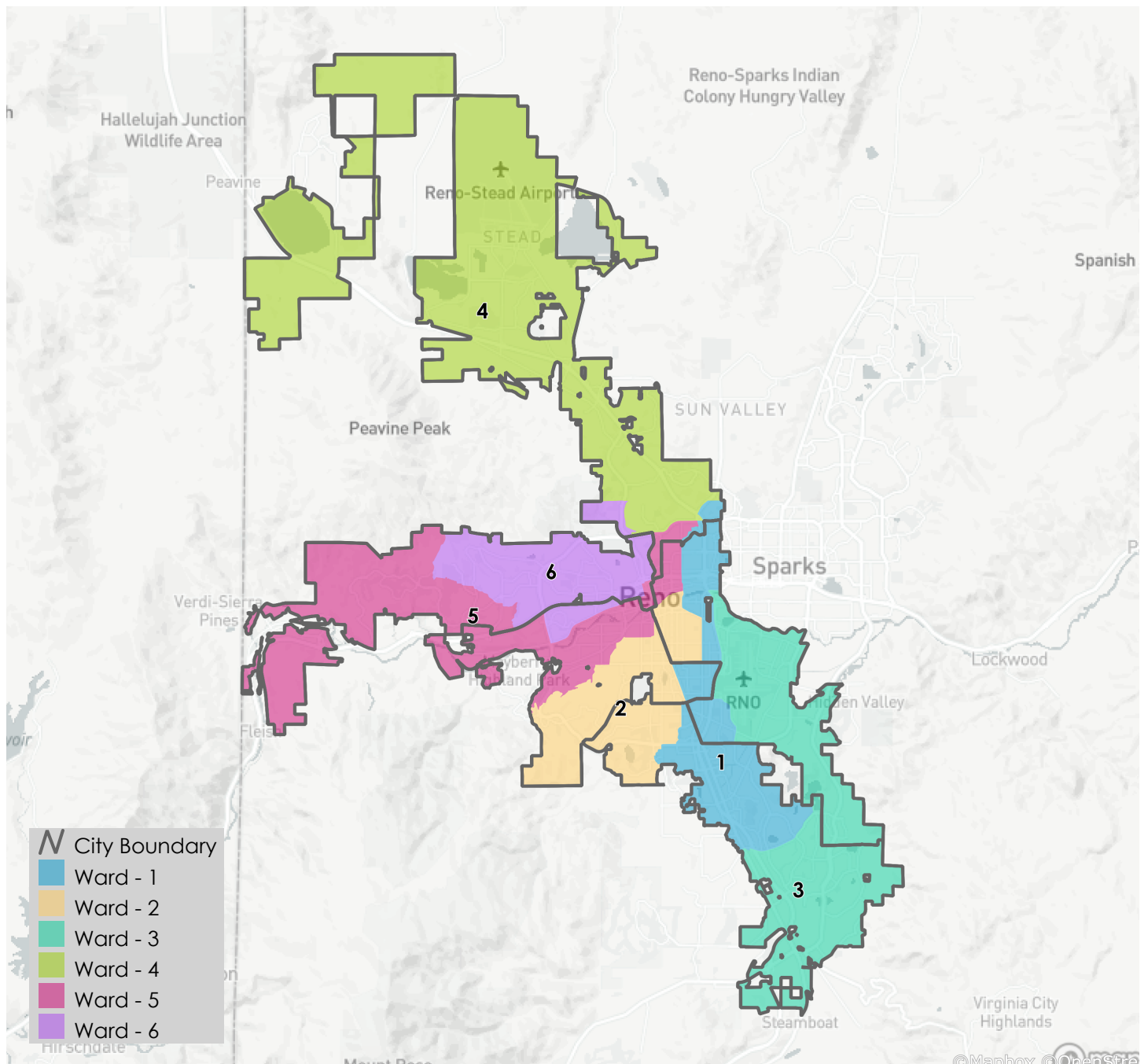
2017-2021 American Community Survey Citizen Voting-age Population (CVAP) by Race and Ethnicity Special Tabulation. Rounding of estimates may lead to summation of race/ethnicity percentages not equal to 100% (+/- 1%).



# City of Reno

## Redistricting Summary Statistics – Draft Scenario 3

06/26/2023



# City of Reno

## Redistricting Summary Statistics – Draft Scenario 3

06/26/2023

### Equal Population Criterion

Ideal Population	44,028
Overall Deviation	1.9%
< 5.0%	> 5.0%

2020 Census P.L. 94-171 Redistricting  
Data Summary Files - Total Population.

### Total Population & Deviation per Ward

Ward	Total Population	Over / Under Ideal	Deviation From Ideal
1	44,452	425	1.0%
2	43,983	-45	-0.1%
3	44,224	197	0.4%
4	43,597	-431	-1.0%
5	43,992	-36	-0.1%
6	43,917	-111	-0.3%

### Total Population by Race/Ethnicity per Ward

Ward	White	Black or African American	American Indian or Alaska Native	Asian	Native Hawaiian and Pacific Islander	Some Other Race	Two or More Races	Hispanic/Latino
1	36.7%	4.6%	0.9%	6.4%	1.1%	0.5%	4.1%	45.8%
2	63.9%	2.7%	0.7%	5.9%	0.7%	0.7%	5.1%	20.4%
3	64.4%	1.5%	0.6%	9.4%	0.4%	0.4%	5.7%	17.6%
4	48.3%	3.0%	0.8%	6.1%	1.2%	0.5%	5.4%	34.7%
5	68.7%	2.7%	0.7%	5.6%	0.4%	0.6%	5.3%	15.9%
6	63.4%	2.6%	0.7%	8.3%	0.6%	0.5%	6.4%	17.6%

2020 Census P.L. 94-171 Redistricting Data Summary Files - Total Population by Race and Hispanic/Latino Origin.

# City of Reno

## Redistricting Summary Statistics – Draft Scenario 3

06/26/2023

### VAP by Race/Ethnicity per Ward

Ward	White	Black or African American	American Indian or Alaska Native	Asian	Native Hawaiian and Pacific Islander	Some Other Race	Two or More Races	Hispanic/Latino
1	42.4%	4.5%	0.9%	7.1%	0.9%	0.5%	3.7%	40.1%
2	67.6%	2.6%	0.7%	6.1%	0.6%	0.7%	4.2%	17.6%
3	67.4%	1.6%	0.6%	9.6%	0.4%	0.4%	4.6%	15.5%
4	53.1%	3.0%	0.9%	6.6%	1.0%	0.5%	4.5%	30.4%
5	71.3%	2.8%	0.7%	5.9%	0.4%	0.6%	4.3%	13.9%
6	66.1%	2.6%	0.7%	8.6%	0.5%	0.4%	5.6%	15.5%

2020 Census P.L 94-171 Redistricting Data Summary Files - Voting-age Population (VAP) by Race and Hispanic/Latino Origin.

### CVAP by Race/Ethnicity per Ward

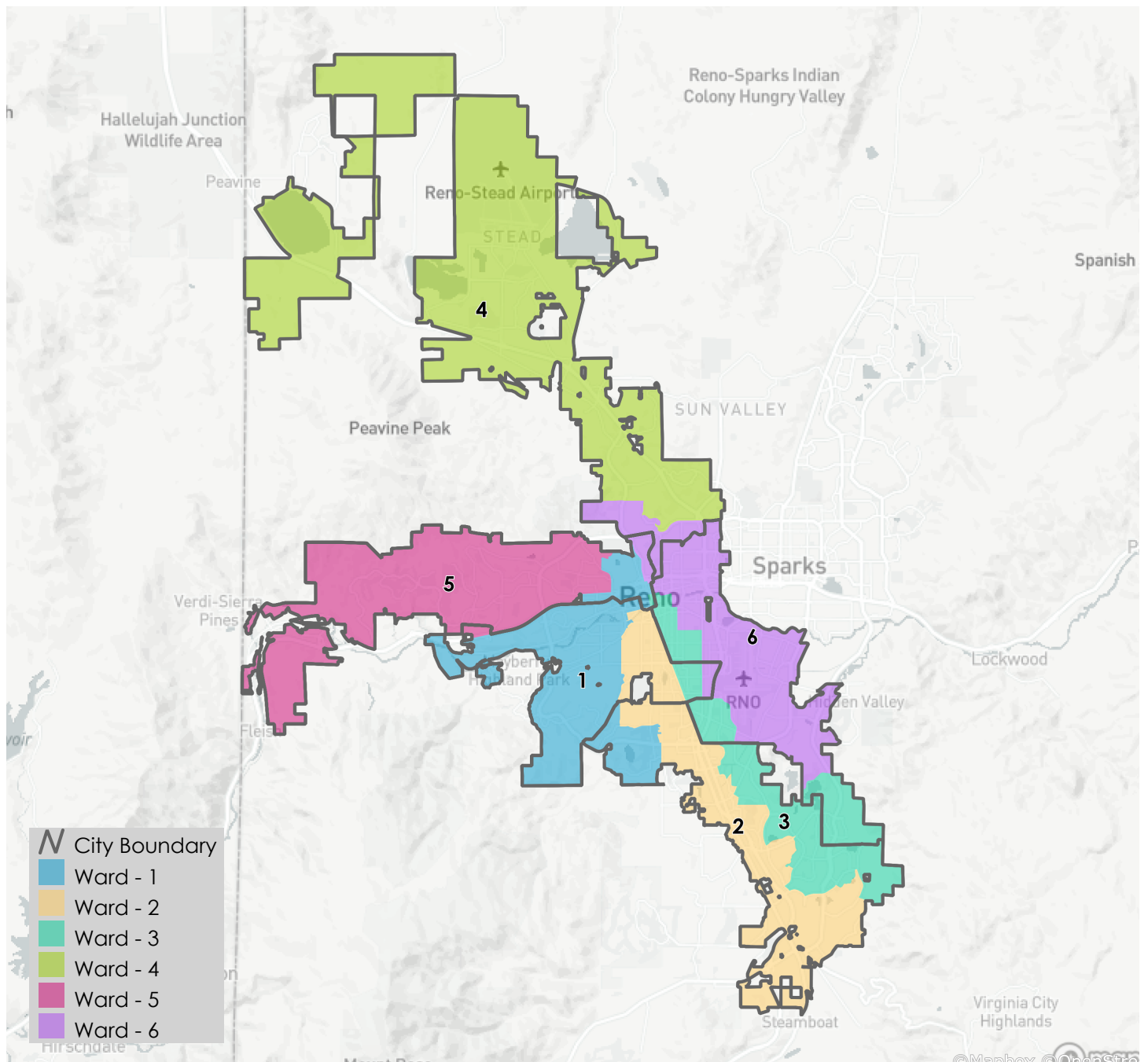
Ward	White	Black or African American	American Indian or Alaska Native	Asian	Native Hawaiian and Pacific Islander	Two or More Races	Hispanic/Latino
1	55.2%	5.2%	1.1%	5.5%	1.4%	2.3%	29.4%
2	74.8%	2.3%	0.9%	5.6%	0.8%	2.8%	12.8%
3	75.5%	1.4%	1.0%	5.8%	1.3%	2.9%	12.2%
4	64.7%	4.4%	0.7%	4.5%	0.4%	3.5%	21.8%
5	76.1%	3.5%	0.9%	4.7%	0.5%	2.3%	12.1%
6	73.5%	3.2%	0.9%	7.2%	0.5%	3.0%	11.8%

2017-2021 American Community Survey Citizen Voting-age Population (CVAP) by Race and Ethnicity Special Tabulation. Rounding of estimates may lead to summation of race/ethnicity percentages not equal to 100% (+/- 1%).

# City of Reno

## Redistricting Summary Statistics – Draft Scenario 4

06/26/2023



# City of Reno

## Redistricting Summary Statistics – Draft Scenario 4

06/26/2023

### Equal Population Criterion

Ideal Population	44,028
Overall Deviation	2.0%
<div style="display: flex; justify-content: space-between; width: 100%;"> <span style="background-color: #4CAF50; color: white; padding: 2px 5px;">&lt; 5.0%</span> <span style="background-color: #FFEB3B; color: black; padding: 2px 5px;">&gt; 5.0%</span> </div>	

2020 Census P.L. 94-171 Redistricting  
Data Summary Files - Total Population.

### Total Population & Deviation per Ward

Ward	Total Population	Over / Under Ideal	Deviation From Ideal
1	43,464	-564	-1.3%
2	44,315	288	0.7%
3	44,098	71	0.2%
4	43,858	-170	-0.4%
5	44,084	57	0.1%
6	44,346	319	0.7%

### Total Population by Race/Ethnicity per Ward

Ward	White	Black or African American	American Indian or Alaska Native	Asian	Native Hawaiian and Pacific Islander	Some Other Race	Two or More Races	Hispanic/Latino
1	72.1%	2.1%	0.6%	5.7%	0.3%	0.5%	5.7%	13.0%
2	63.6%	2.9%	0.6%	7.3%	0.6%	0.5%	5.5%	18.8%
3	50.3%	2.7%	0.7%	7.8%	0.5%	0.6%	4.8%	32.7%
4	48.0%	3.0%	0.8%	6.1%	1.2%	0.5%	5.4%	34.9%
5	67.8%	1.7%	0.6%	7.9%	0.5%	0.5%	5.7%	15.2%
6	43.5%	4.7%	0.9%	6.8%	1.3%	0.6%	4.8%	37.3%

2020 Census P.L. 94-171 Redistricting Data Summary Files - Total Population by Race and Hispanic/Latino Origin.

# City of Reno

## Redistricting Summary Statistics – Draft Scenario 4

06/26/2023

### VAP by Race/Ethnicity per Ward

Ward	White	Black or African American	American Indian or Alaska Native	Asian	Native Hawaiian and Pacific Islander	Some Other Race	Two or More Races	Hispanic/Latino
1	74.5%	2.2%	0.6%	5.8%	0.2%	0.5%	4.6%	11.5%
2	67.2%	2.7%	0.7%	7.5%	0.6%	0.5%	4.6%	16.2%
3	54.7%	2.7%	0.6%	8.1%	0.5%	0.6%	4.0%	28.7%
4	52.9%	3.0%	1.0%	6.6%	1.0%	0.5%	4.5%	30.6%
5	70.8%	1.7%	0.6%	8.3%	0.5%	0.4%	4.6%	13.1%
6	48.5%	4.7%	1.0%	7.4%	1.1%	0.6%	4.5%	32.2%

2020 Census P.L 94-171 Redistricting Data Summary Files - Voting-age Population (VAP) by Race and Hispanic/Latino Origin.

### CVAP by Race/Ethnicity per Ward

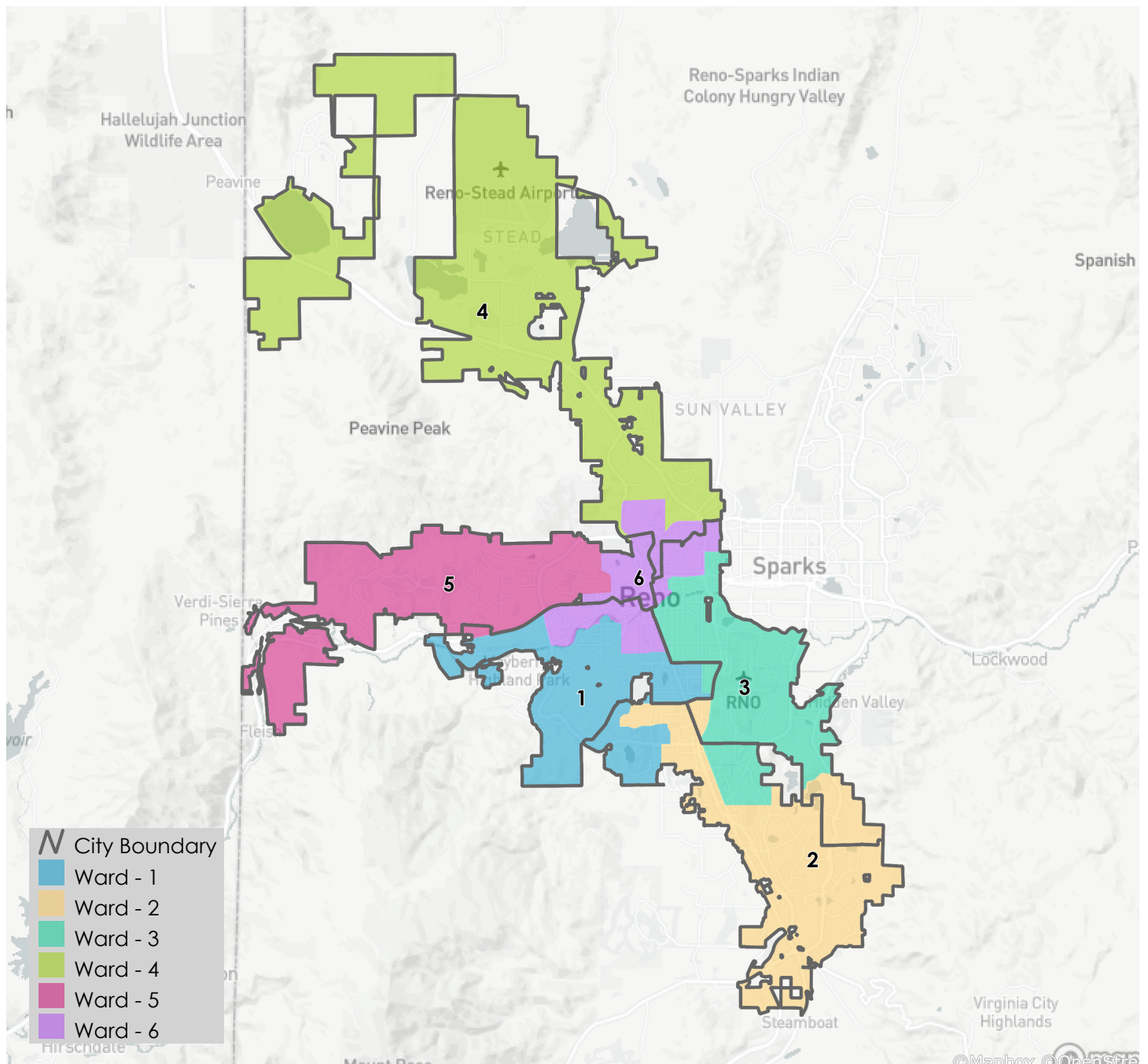
Ward	White	Black or African American	American Indian or Alaska Native	Asian	Native Hawaiian and Pacific Islander	Two or More Races	Hispanic/Latino
1	80.5%	2.4%	0.9%	4.5%	0.3%	2.3%	9.2%
2	73.6%	1.5%	0.9%	7.1%	0.5%	3.7%	12.8%
3	64.1%	3.7%	1.1%	6.4%	2.0%	2.3%	20.4%
4	64.3%	4.7%	0.6%	4.6%	0.4%	3.4%	22.0%
5	76.6%	2.8%	0.6%	6.5%	0.6%	2.9%	10.1%
6	61.8%	4.9%	1.4%	4.3%	1.0%	2.2%	24.4%

2017-2021 American Community Survey Citizen Voting-age Population (CVAP) by Race and Ethnicity Special Tabulation. Rounding of estimates may lead to summation of race/ethnicity percentages not equal to 100% (+/- 1%).

# City of Reno

## Redistricting Summary Statistics – Draft Scenario 5

06/26/2023



# City of Reno

## Redistricting Summary Statistics – Draft Scenario 5

06/26/2023

### Equal Population Criterion

Ideal Population	44,028
Overall Deviation	1.9%
< 5.0%	> 5.0%

2020 Census P.L. 94-171 Redistricting  
Data Summary Files - Total Population.

### Total Population & Deviation per Ward

Ward	Total Population	Over / Under Ideal	Deviation From Ideal
1	43,721	-307	-0.7%
2	44,299	272	0.6%
3	43,920	-108	-0.2%
4	44,545	518	1.2%
5	43,897	-131	-0.3%
6	43,783	-245	-0.6%

### Total Population by Race/Ethnicity per Ward

Ward	White	Black or African American	American Indian or Alaska Native	Asian	Native Hawaiian and Pacific Islander	Some Other Race	Two or More Races	Hispanic/Latino
1	64.4%	2.2%	0.5%	5.2%	0.6%	0.5%	4.8%	21.8%
2	66.3%	1.8%	0.6%	9.6%	0.4%	0.4%	5.8%	15.1%
3	43.6%	3.7%	0.9%	6.3%	0.8%	0.6%	4.3%	39.7%
4	48.5%	3.1%	0.9%	5.8%	1.2%	0.5%	5.5%	34.6%
5	67.8%	1.7%	0.6%	8.0%	0.5%	0.5%	5.7%	15.2%
6	54.7%	4.7%	0.9%	6.8%	0.9%	0.6%	5.9%	25.6%

2020 Census P.L. 94-171 Redistricting Data Summary Files - Total Population by Race and Hispanic/Latino Origin.



# City of Reno

## Redistricting Summary Statistics – Draft Scenario 5

06/26/2023

### VAP by Race/Ethnicity per Ward

Ward	White	Black or African American	American Indian or Alaska Native	Asian	Native Hawaiian and Pacific Islander	Some Other Race	Two or More Races	Hispanic/Latino
1	68.8%	2.0%	0.5%	5.5%	0.5%	0.5%	3.8%	18.3%
2	69.3%	1.8%	0.6%	9.7%	0.4%	0.4%	4.6%	13.1%
3	48.7%	3.8%	0.9%	6.8%	0.7%	0.7%	3.8%	34.5%
4	53.4%	3.0%	1.0%	6.2%	1.0%	0.4%	4.6%	30.3%
5	70.8%	1.7%	0.6%	8.3%	0.5%	0.4%	4.6%	13.2%
6	58.7%	4.5%	0.8%	7.1%	0.8%	0.6%	5.3%	22.0%

2020 Census P.L 94-171 Redistricting Data Summary Files - Voting-age Population (VAP) by Race and Hispanic/Latino Origin.

### CVAP by Race/Ethnicity per Ward

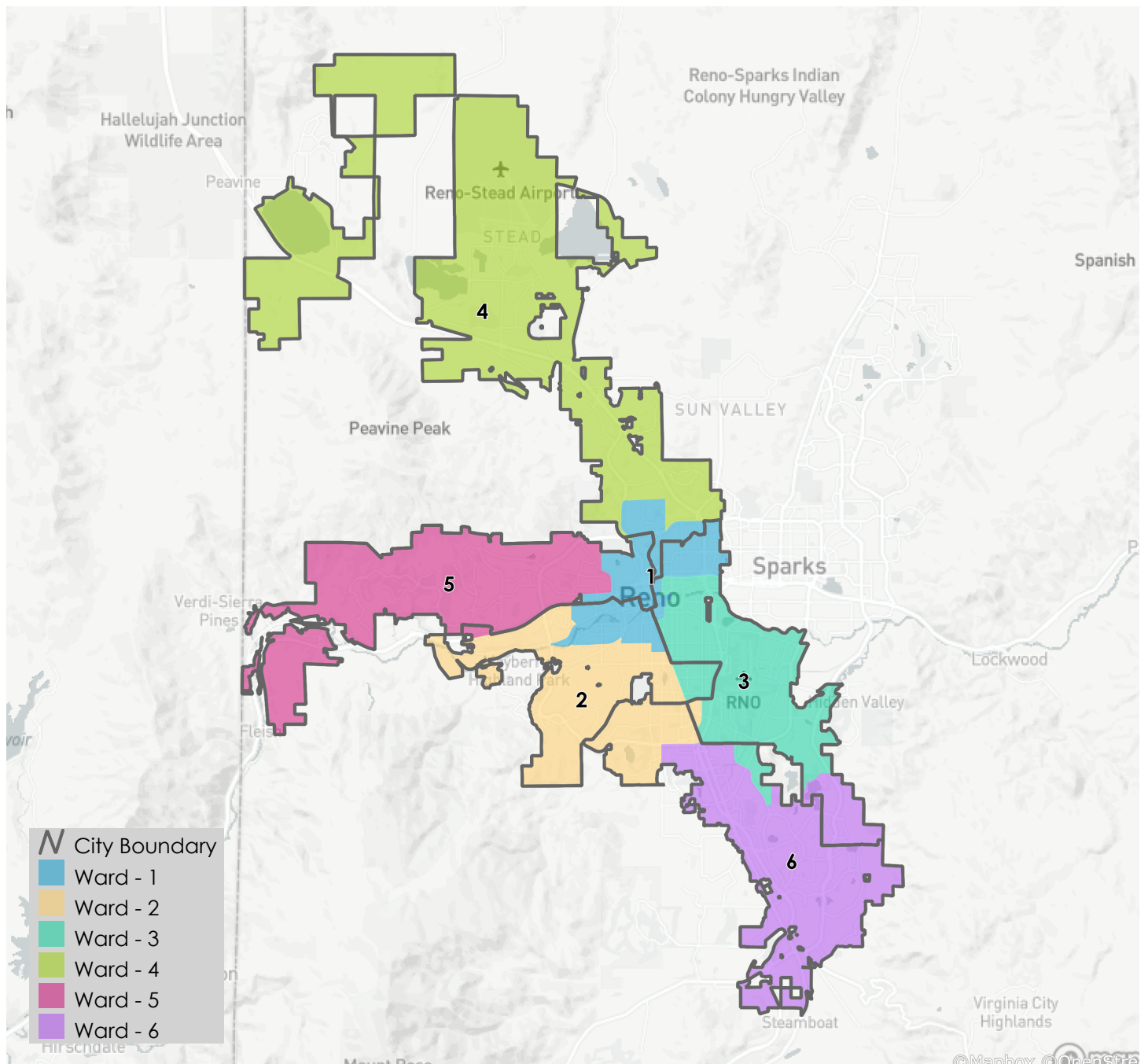
Ward	White	Black or African American	American Indian or Alaska Native	Asian	Native Hawaiian and Pacific Islander	Two or More Races	Hispanic/Latino
1	78.5%	2.2%	0.6%	3.8%	0.6%	2.4%	11.9%
2	73.9%	1.6%	1.0%	7.4%	1.2%	3.5%	11.5%
3	60.5%	3.8%	1.3%	4.9%	1.4%	2.2%	25.8%
4	64.3%	4.5%	0.7%	4.5%	0.4%	3.4%	22.2%
5	76.6%	2.8%	0.6%	6.5%	0.6%	2.9%	10.1%
6	69.1%	4.5%	1.3%	6.1%	0.5%	2.5%	16.0%

2017-2021 American Community Survey Citizen Voting-age Population (CVAP) by Race and Ethnicity Special Tabulation. Rounding of estimates may lead to summation of race/ethnicity percentages not equal to 100% (+/- 1%).

# City of Reno

## Redistricting Summary Statistics – Draft Scenario 6

06/26/2023



# City of Reno

## Redistricting Summary Statistics – Draft Scenario 6

06/26/2023

### Equal Population Criterion

Ideal Population	44,028
Overall Deviation	4.3%
<div style="display: flex; justify-content: space-between; width: 100%;"> <span style="background-color: #4CAF50; color: white; padding: 2px 5px;">&lt; 5.0%</span> <span style="background-color: #FFEB3B; color: black; padding: 2px 5px;">&gt; 5.0%</span> </div>	

2020 Census P.L. 94-171 Redistricting  
Data Summary Files - Total Population.

### Total Population & Deviation per Ward

Ward	Total Population	Over / Under Ideal	Deviation From Ideal
1	45,027	1,000	2.3%
2	43,164	-864	-2.0%
3	43,115	-913	-2.1%
4	44,545	518	1.2%
5	43,897	-131	-0.3%
6	44,417	390	0.9%

### Total Population by Race/Ethnicity per Ward

Ward	White	Black or African American	American Indian or Alaska Native	Asian	Native Hawaiian and Pacific Islander	Some Other Race	Two or More Races	Hispanic/Latino
1	53.6%	4.7%	0.8%	6.9%	1.0%	0.6%	5.5%	27.0%
2	69.2%	2.1%	0.5%	5.6%	0.5%	0.5%	5.4%	16.1%
3	40.6%	3.7%	0.9%	5.6%	0.8%	0.6%	4.0%	43.8%
4	48.5%	3.1%	0.9%	5.8%	1.2%	0.5%	5.5%	34.6%
5	67.8%	1.7%	0.6%	8.0%	0.5%	0.5%	5.7%	15.2%
6	65.6%	1.9%	0.5%	9.7%	0.4%	0.4%	5.9%	15.5%

2020 Census P.L. 94-171 Redistricting Data Summary Files - Total Population by Race and Hispanic/Latino Origin.

# City of Reno

## Redistricting Summary Statistics – Draft Scenario 6

06/26/2023

### VAP by Race/Ethnicity per Ward

Ward	White	Black or African American	American Indian or Alaska Native	Asian	Native Hawaiian and Pacific Islander	Some Other Race	Two or More Races	Hispanic/Latino
1	57.8%	4.6%	0.9%	7.2%	0.8%	0.6%	5.0%	23.2%
2	72.9%	2.0%	0.6%	5.8%	0.5%	0.5%	4.3%	13.5%
3	45.9%	3.7%	0.9%	6.2%	0.7%	0.7%	3.6%	38.3%
4	53.4%	3.0%	1.0%	6.2%	1.0%	0.4%	4.6%	30.3%
5	70.8%	1.7%	0.6%	8.3%	0.5%	0.4%	4.6%	13.2%
6	68.6%	1.9%	0.6%	9.9%	0.4%	0.4%	4.7%	13.6%

2020 Census P.L 94-171 Redistricting Data Summary Files - Voting-age Population (VAP) by Race and Hispanic/Latino Origin.

### CVAP by Race/Ethnicity per Ward

Ward	White	Black or African American	American Indian or Alaska Native	Asian	Native Hawaiian and Pacific Islander	Two or More Races	Hispanic/Latino
1	67.9%	4.5%	1.2%	5.5%	0.6%	2.4%	17.9%
2	79.4%	2.1%	0.6%	5.4%	0.5%	2.6%	9.3%
3	59.4%	4.1%	1.5%	4.1%	1.1%	2.4%	27.4%
4	64.3%	4.5%	0.7%	4.5%	0.4%	3.4%	22.2%
5	76.6%	2.8%	0.6%	6.5%	0.6%	2.9%	10.1%
6	74.9%	1.5%	0.9%	7.1%	1.5%	3.2%	11.1%

2017-2021 American Community Survey Citizen Voting-age Population (CVAP) by Race and Ethnicity Special Tabulation. Rounding of estimates may lead to summation of race/ethnicity percentages not equal to 100% (+/- 1%).