



# Office of the City Manager

---

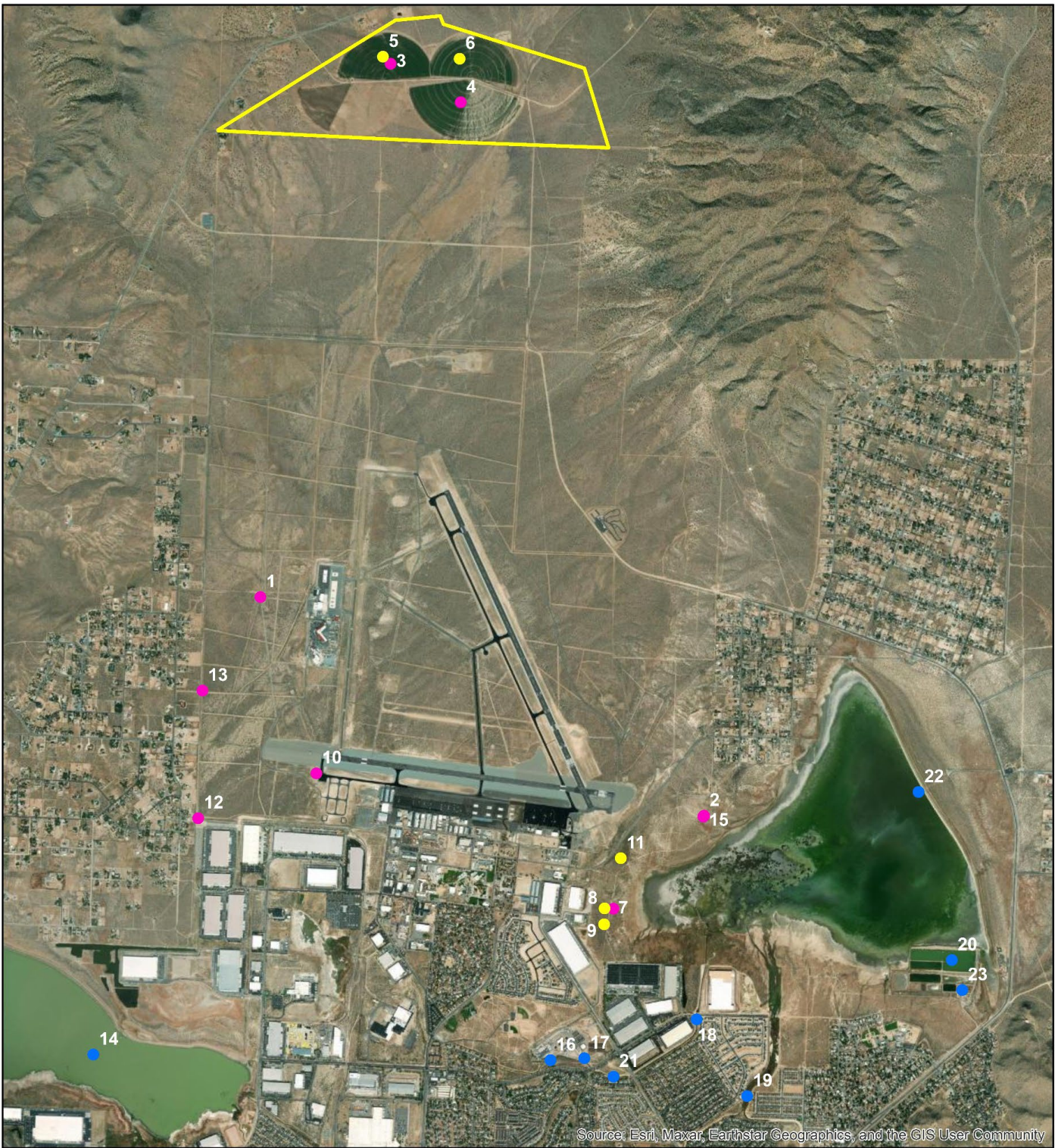
## MEMORANDUM

**DATE:** May 8, 2023  
**TO:** Honorable Mayor and City Council  
**THROUGH:** Doug Thornley, City Manager Approved Electronically  
**FROM:** Trina Magoon, Director Utility Services

**SUBJECT:** **Truckee Meadow Water Authority Swan Lake PFAS Sampling Plan**

---

Councilmembers have asked what areas were sampled by Truckee Meadow Water Authority (TMWA) for Per- and polyfluoroalkyl substances (PFAS) in April 2023. The attached Swan Lake Sampling Plan identifies the locations sampled. Results are anticipated by June 2023.






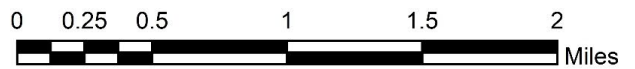
Source: Esri, Maxar, Earthstar Geographics, and the GIS User Community

**Legend**

 American Flat

**Sample Type**

-  Soil
-  Surface Water
-  Well Water



**Figure 1**

Table 1. Sample locations

ID	Location	UTM-NAD83-Zone 11		Sample Type	Owner	Notes
		Easting	Northing			
1	Army	251,413	4,395,752	Well Water	TMWA	
2	AFS	254,907	4,394,029	Well Water	TMWA	
3	MW1	252,439	4,399,951	Well Water	TMWA	
4	NAM	252,991	4,399,649	Well Water	TMWA	
5	Soil 1	252,378	4,400,007	Soil	Washoe County	Sample 6" below ground surface
6	Soil 2	252,982	4,399,991	Soil	Washoe County	Sample 6" below ground surface
7	USGS Fire	254,193	4,393,297	Well Water	USGS	
8	Soil 3	254,123	4,393,299	Soil	BLM	Sample 6" below ground surface
9	Soil 4	254,120	4,393,174	Soil	BLM	Sample 6" below ground surface
10	MW-120A	251,854	4,394,364	Well Water	TMWA	
11	Soil 5	254,252	4,393,694	Soil	BLM	Sample 6" below ground surface
12	MW-09	250,923	4,394,010	Well Water	TMWA	
13	MW-121B	250,956	4,395,015	Well Water	TMWA	
14	Silver Lake	250,096	4,392,149	Surface Water	Washoe County	
15	AFD	254,901	4,394,022	Well Water	TMWA	
16	Creek 1	253,699	4,392,104	Surface Water	City of Reno	Sample near American Flat pipe inlet
17	RSWRF Outflow	253,964	4,392,119	Surface Water	City of Reno	Upstream of RSWRF outflow
18	Creek 2	254,849	4,392,425	Surface Water	City of Reno	
19	Drainage	255,247	4,391,821	Surface Water	City of Reno	Sample near UNR previous location
20	LVWRF Pond	256,859	4,392,893	Surface Water	Washoe County	
21	Creek 3	254,194	4,391,975	Surface Water	City of Reno	
22	Swan Lake	256,597	4,394,217	Surface Water	BLM	
23	LVWRF Discharge	256,941	4,392,656	Surface Water	Washoe County	