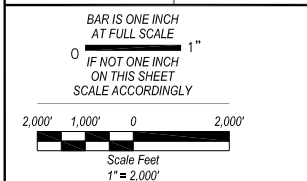


NOTE: INFRASTRUCTURE LOCATIONS AND SIZES ARE CONCEPTUAL AND WILL BE REFINED WHEN MORE DETAILED FACILITY PLANS ARE DEVELOPED.



| MAP SYMBOLS |                            |  |                        |
|-------------|----------------------------|--|------------------------|
|             | LIFT STATION               |  | INTERCEPTOR (PROPOSED) |
|             | WATER RECLAMATION FACILITY |  | CITY OF RENO TMSA      |
|             | FORCE MAIN (PROPOSED)      |  | HYDROBASIN BOUNDARY    |
|             |                            |  | OUTSIDE TMSA           |

10381 Double R, Boulevard  
 Reno, Nevada 89521  
 Phone: (775) 827-2311  
 Fax: (775) 827-2316

| SPRING MOUNTAIN TMSA - FIGURE 2-4<br>PLANNED WASTEWATER COLLECTION & TREATMENT FACILITIES<br>COUNTY OF WASHOE, NEVADA |          |    |       |             |          |         |  |  |  |
|---|----------|----|-------|-------------|----------|---------|--|--|--|
| REV NO.   | REVISION | BY | JOB # | RENO06-002  | DESIGNED | JPE/CVB |  |  |  |
|   |          |    | DATE  | JUNE 2007   | DRAWN    | JBW     |  |  |  |
|   |          |    | SCALE | 1" = 2,000' | CHECKED  | CVB     |  |  |  |