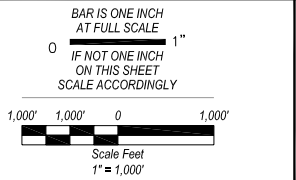


PROPOSED PIPE DIAMETER (IN)
10
12
14
16
18
20
24
30

FACILITY LEGEND
EXISTING WELL
EXISTING TANK
PROPOSED TANK
PROPOSED PUMP STATION
PROPOSED WATER TREATMENT PLANT LOCATION

MAP SYMBOLS	
TMWA RETAIL AREA	WASHOE COUNTY WATER SPHERE OF INFLUENCE
TMWA SPHERE OF INFLUENCE	WASHOE COUNTY BOUNDARY



HDR
ECO:LOGIC
 Consulting Engineers
 10381 Double R. Boulevard
 Reno, Nevada 89521
 Phone: (775) 827-2311
 Fax: (775) 827-2316

TRUCKEE MEADOWS TMSA - FIGURE 9-B2 VERDI PROJECT DIVISIONS FOR COST ANALYSIS COUNTY OF WASHOE, NEVADA			
REV. NO.	REVISION	BY	
JOB #	RENO06-002	DESIGNED	BEL/KN
DATE	JUNE 2007	DRAWN	KN
SCALE	1" = 1,000'	CHECKED	CVB