



# RENO MASTER PLAN UPDATE

## Citywide Policy Review

April 2017



# The Planning Process



May 2015 – Jan 2016

Setting the Stage

Feb – June 2016

1. Plan Foundations

July 2016 – Dec 2016

2: Focus Area Opportunities  
and Key Choices

UNDERWAY

3: Draft and Final Plan

Aug- Sept 2017

4: Plan Adoption

# Parts of the Plan



1. Plan Foundations (Complete)
  - Key plan concepts: Guiding Principles and Goals
2. Citywide Policies (Current Focus)
  - Organized by guiding principles and goals
3. Growth and Reinvestment Framework (Focus of Feb 2017 outreach)
  - Area-specific policies: Structure Plan, Land Use Plan, Design Principles
4. Implementation (In progress—coming soon)
  - Strategies/actions to support implementation of each goal
5. Appendices (In progress—coming soon)
  - Maps, technical reports, and other supporting information

# Community Engagement to Date



- Over **6,000** people participated in Phase I visioning
- Over **2,200** people have participated in Phase II to date through web-surveys and in-person meetings
- **1,100 +** subscribers to monthly newsletters
- Ongoing coordination local and regional partners and targeted groups

**More input opportunities as the Master Plan continues to take shape!**



[www.reno.gov/reimaginereno](http://www.reno.gov/reimaginereno)

# Major Takeaways: Community Visioning



- Vision for Reno now and in the future:
  1. A base for outdoor activities
  2. An arts and culture center
  3. A university town & technology center
- Top community values
  - Safety for all
  - Well-maintained and attractive city and infrastructure
  - Affordability
  - Sense of community
- Other key takeaways:
  - People want more walkable neighborhoods
  - Improving downtown is very important

# Want to Learn More?

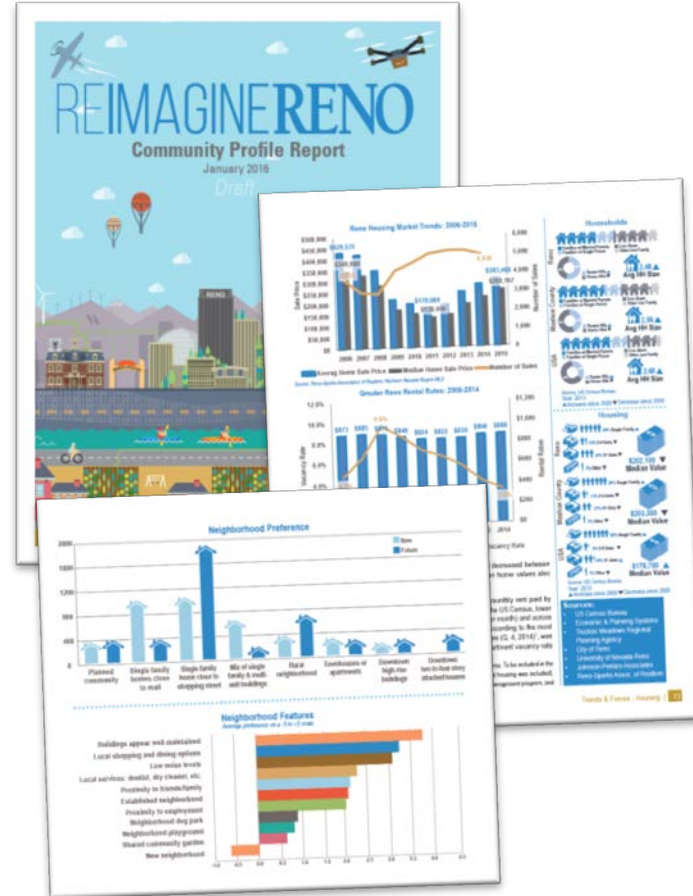


## Phase I:

- Master Plan Assessment
- Community Profile
- Phase I Public Input Summary

## Phase II:

- Draft Guiding Principles and Goals
- Employment Demand Forecast and Needs Analysis
- Housing Demand Forecast and Needs Assessment
- Draft Structure Plan and Design Principles
- Future Land Use Plan (coming soon!)



[www.reno.gov/reimaginereno](http://www.reno.gov/reimaginereno)

# Guiding Principles



Resilient local and regional economy



Well-connected city and region



Responsible and well-managed growth



Safe, healthy, and inclusive community



Thriving downtown and university district



Quality places and outdoor recreation opportunities



Vibrant neighborhoods and centers



Effective government

# GP 1: RESILIENT LOCAL & REGIONAL ECONOMY



## GOALS

**1.1: Build strong partnerships and encourage local and regional collaboration on economic development initiatives.**

**1.2: Promote a diverse and stable economic base.**

**1.3: Support continued growth of Reno's technology and knowledge-based sectors.**

**1.4: Support the growth, creation, and retention of local businesses and start-ups.**

**1.5: Support the development of a diverse, educated, and adaptable workforce.**

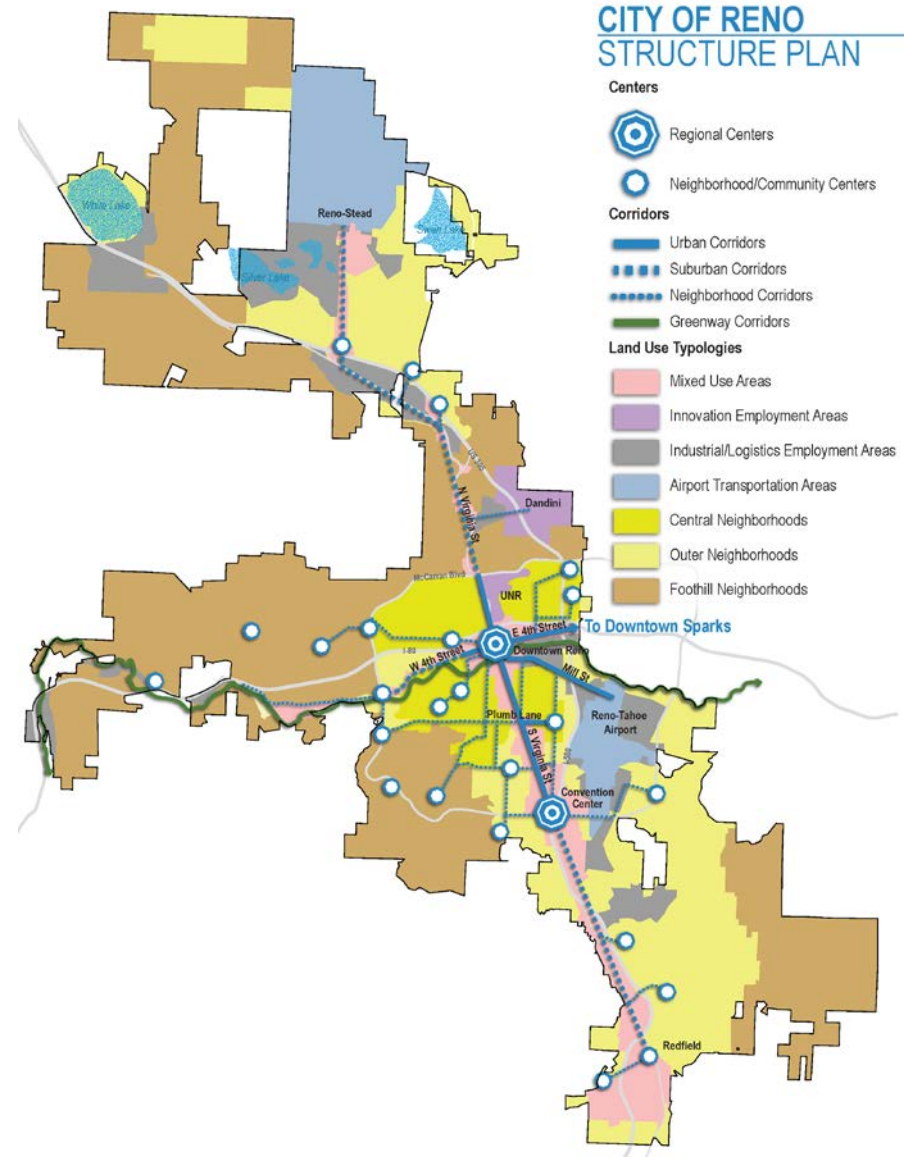




# HOW WILL THE POLICIES HELP PROMOTE A MORE RESILIENT ECONOMY?



- Provide a framework for local decision-making on economic development issues
- Foster continued collaboration with state and regional partners on initiatives that support the city's goals
- Support local businesses and start-ups
- Emphasize the importance of quality of life considerations



# GP 2: RESPONSIBLE & WELL-MANAGED GROWTH



## GOALS

**2.1: Support a fiscally-responsible growth pattern and annexation policy to maintain and improve existing levels of service for current residents and future generations.**

**2.2: Encourage infill and redevelopment.**

**2.3: Ensure effective, efficient, and equitable delivery of city services and infrastructure.**

**2.4: Collaborate with regional entities and service providers on growth and infrastructure issues.**

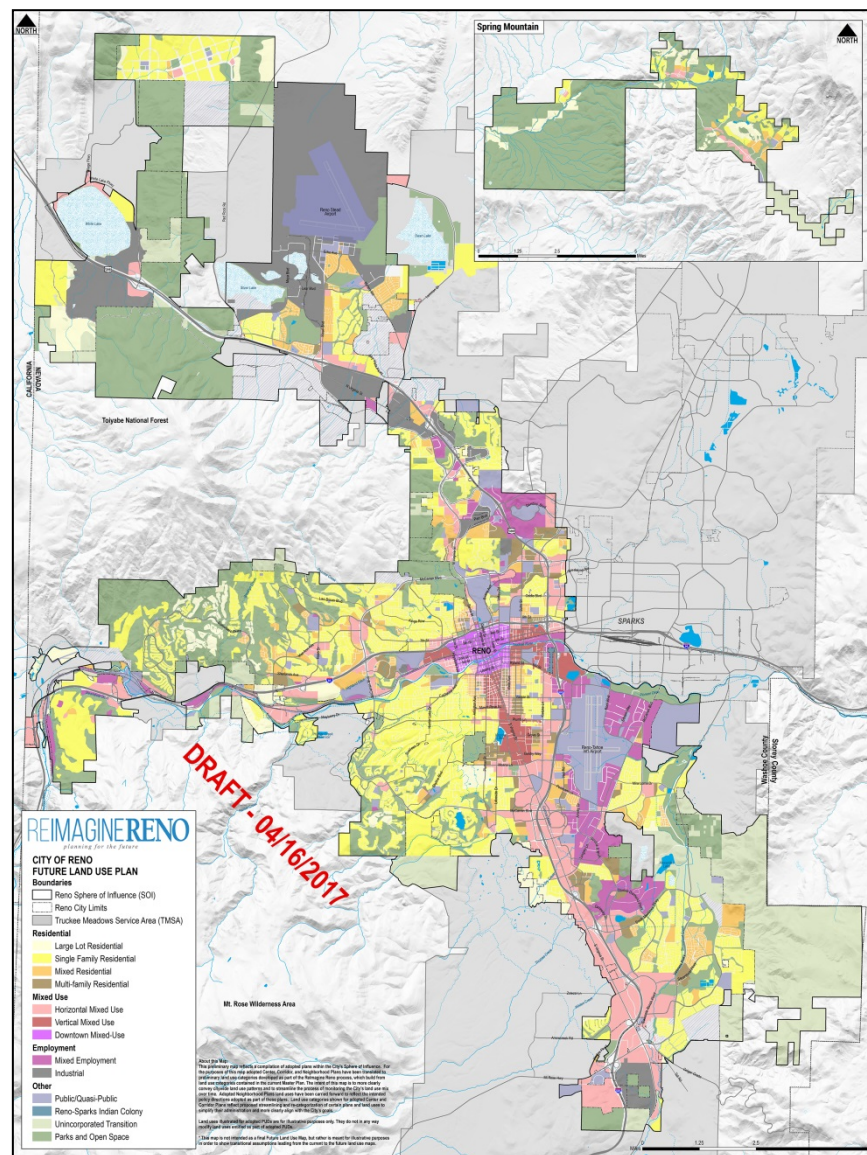
**2.5: Promote the use of sustainable development practices.**



# RESPONSIBLE & WELL-MANAGED GROWTH?



- Clarify parameters for future growth within the Sphere of Influence
- Establish priority areas for growth—generally, as well as for infill and redevelopment
- Encourage greater housing options in large developments
- Facilitate collaboration with partners in the region
- Encourage sustainable development practices



# GP 3: THRIVING DOWNTOWN & UNIVERSITY DISTRICT



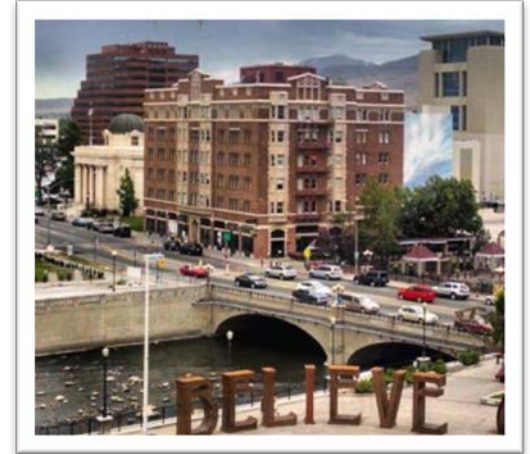
## GOALS

**3.1: Cultivate a vibrant and livable downtown environment that balances the needs of residents and visitors.**

**3.2: Enhance public safety and create inviting streets and public spaces for people.**

**3.3: Promote the continued revitalization of the downtown economy and built environment.**

**3.4: Strengthen multimodal connections to and within downtown Reno.**



# HOW WILL THE POLICIES PROMOTE A THRIVING DOWNTOWN & UNIVERSITY DISTRICT?



- Support core values defined as part Downtown Action Plan
  - Prosperous
  - Connected
  - Livable
  - Safe & Clean
  - Vibrant
- Policies and design principles reinforce district-level distinctions within downtown



# GP 4: VIBRANT NEIGHBORHOODS & CENTERS



## GOALS

**4.1: Encourage a diverse mix of housing options to meet the needs of existing and future residents of all ages, abilities, and income levels.**

**4.2: Promote the development of new neighborhoods that offer a range of lifestyle options and amenities that meet the short- and long-term needs of the community.**

**4.3: Support continued investment in and ongoing maintenance of infrastructure and amenities in established neighborhoods.**

**4.4: Encourage the creation of walkable community/ neighborhood centers that provide a variety of services and amenities.**

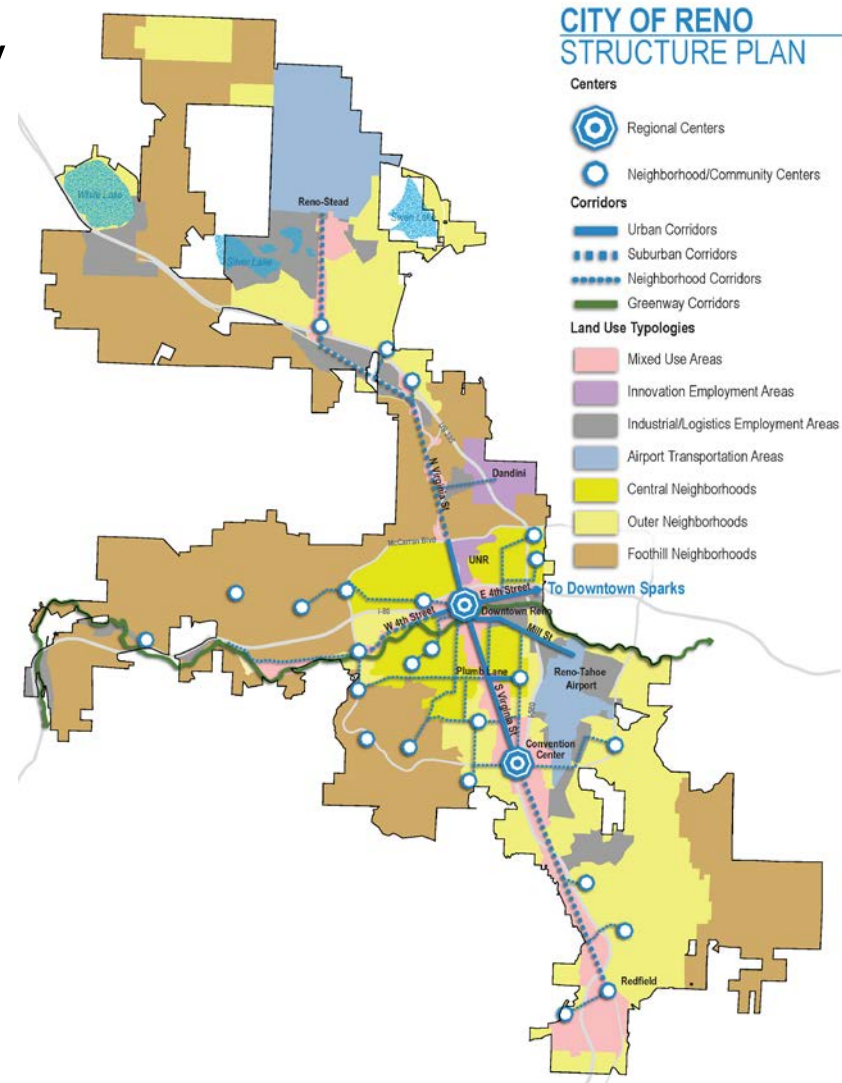
**4.5: Encourage pedestrian and bicycle connections and greenways as part of new development and integrate into established neighborhoods.**



# HOW WILL THE POLICIES PROMOTE VIBRANT NEIGHBORHOODS AND CENTERS?



- Promote housing diversity/affordability
- Promote ongoing maintenance and reinvestment in established neighborhoods
- Improve access for pedestrians and bicycles
- Reinforce concepts included in the Structure Plan and Design Principles
  - Neighborhood Centers
  - Enhanced walkability in both new and existing neighborhoods



# GP 5: WELL-CONNECTED CITY & REGION



## GOALS

**5.1: Continue to develop a balanced, well-connected bicycle and pedestrian network that enhances mobility for all modes.**

**5.2: Actively manage transportation systems and infrastructure to improve reliability, efficiency, and safety.**

**5.3: Facilitate the movement of goods and services throughout the region via truck, air, and rail.**

**5.4: Encourage the use of transit, car or van pools, bicycling, walking, and other forms of alternative transportation.**

**5.5: Anticipate and plan for the implications and opportunities associated with connected vehicles, autonomous vehicles, and the expected transition from personal car ownership to mobility-as-a-service.**

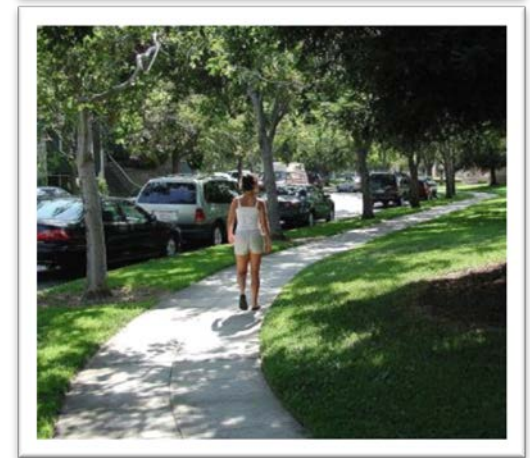




# HOW WILL THE POLICIES ADVANCE A WELL-CONNECTED CITY AND REGION?



- Consider and balance needs of all modes
- Reinforce city's role in transportation planning and establish clear links to the RTP and RTC programs:
  - RTP and RTIP
  - Bicycle & Pedestrian Plan
  - Complete Streets Master Plan
- Support a robust public transportation system
- Manage traffic operations and transportation demand
- Encourage alternative transportation options with trip-reduction programs, supportive development, first and last mile connections, and bikeways and supportive facilities



# GP 6: SAFE, HEALTHY, AND INCLUSIVE COMMUNITY



## GOALS

6.1: Continue to provide high-quality community safety and emergency response services.

6.2: Minimize risks to lives, property, and infrastructure due to natural disasters and other natural or man-made hazards.

6.3: Support active lifestyles among residents of all ages.

6.4: Encourage health and wellness through education and prevention.

6.5: Increase the availability of and access to fresh and local food.

6.6: Foster a culture of inclusivity—embracing and respecting the diversity of Reno’s residents.

6.7: Advocate for a strong and successful education system, workforce training, and lifelong learning opportunities.



# HOW WILL THE POLICIES FOSTER A SAFER, HEALTHIER, AND MORE INCLUSIVE COMMUNITY?



- Reinforce the relationships between safety, access to services/equity, education, and food access
- Carry forward foundation of collaboration for human service provision
- Strengthen existing policies and address gaps:
  - Local food access
  - Hazard mitigation and risk reduction
  - Active living opportunities
  - Diversity and inclusivity



# HOW WILL THE POLICIES FOSTER A SAFER, HEALTHIER, AND MORE INCLUSIVE COMMUNITY?



## LOCAL FOOD ACCESS

**GOAL 6.5: Increase the availability of and access to fresh and local food.**

**Policies address:**

- **Local food production**
- **Food sales**
- **Food access**
- **Food security**
- **Education**
- **Public/private partnerships**



# HOW WILL THE POLICIES FOSTER A SAFER, HEALTHIER, AND MORE INCLUSIVE COMMUNITY?

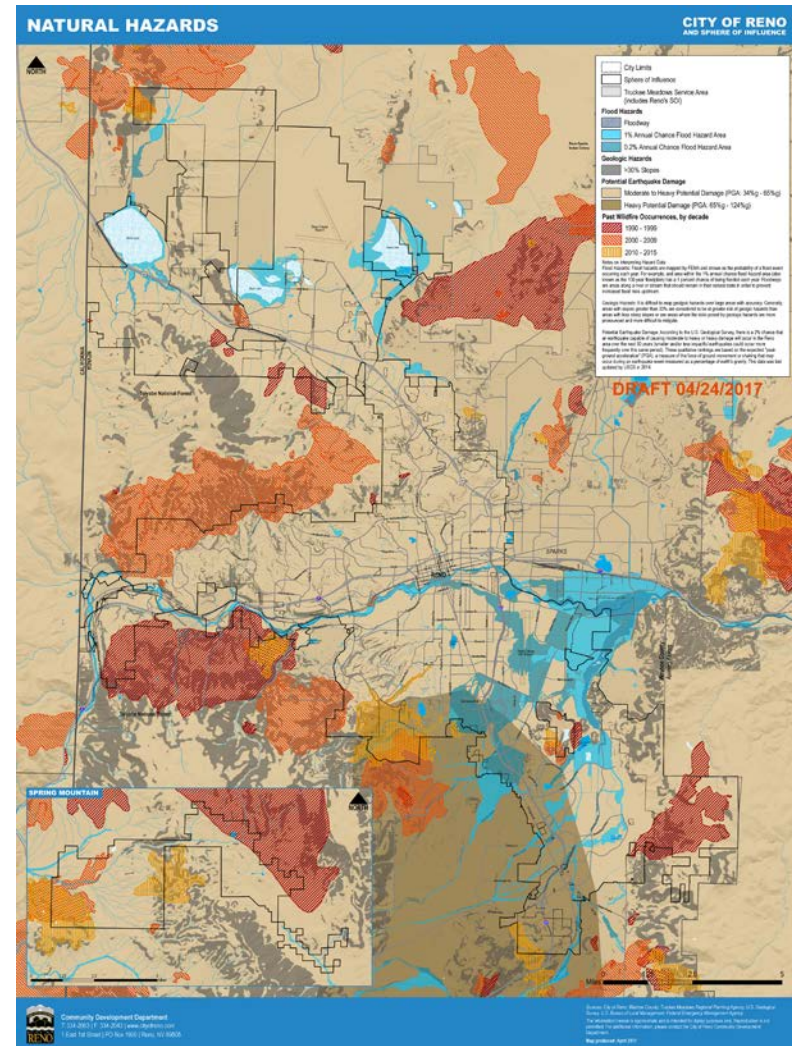


## HAZARD MITIGATION/RESILIENCY

6.2: Minimize risks to lives, property, and infrastructure due to natural disasters and other natural or man-made hazards.

Policies address:

- Integrated planning and decision-making
- Regional mitigation planning
- Wildland Urban Interface (WUI)
- Wildfire Risk Reduction
- Flood management
- Geologic hazards
- Hazardous materials
- Emergency preparedness
- Resiliency of infrastructure and facilities



# GP 7: QUALITY PLACES & OUTDOOR RECREATION OPPORTUNITIES



## GOALS

7.1: Conserve and protect Reno's natural resources and environment.

7.2: Establish an interconnected network of open spaces and greenways.

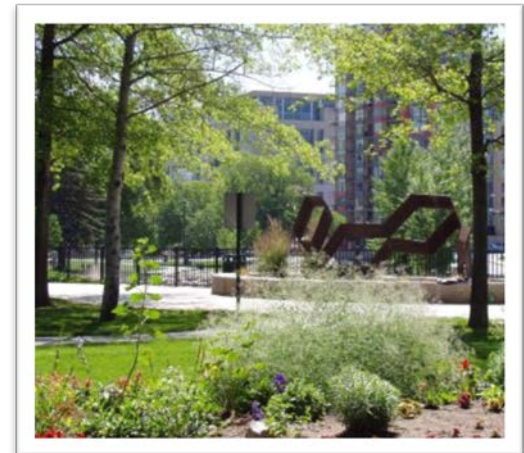
7.3: Maintain access to public lands at the urban/rural interface.

7.4: Increase Reno's profile as a center of arts and culture.

7.5: Protect and preserve Reno's heritage and historic assets.

7.6: Improve quality of the public realm (e.g. parks, public spaces, streets) through context-sensitive design, targeted investment, and regular maintenance.

7.7: Increase tree canopy and green spaces within the City.



# HOW WILL THE POLICIES SUPPORT QUALITY PLACES & OUTDOOR ACTIVITIES?



- Protect and enhance community amenities, public spaces, and recreational opportunities that contribute to quality of life and economic vitality
- Move towards a more access-based approach for parks and recreational opportunities
- Reinforce input received during Phase I outreach regarding:
  - Access to the outdoors
  - High quality public places
  - Maintaining City's sense of place
  - Diverse natural and historic resources
  - Expanding the role of arts and culture



# GP 8: EFFECTIVE GOVERNMENT



## GOALS

8.1: Align day-to-day decision-making with the implementation of the Master Plan.

8.2: Enhance teamwork, cooperation, and problem-solving within the City organization.

8.3: Develop and support leadership that reflects the diversity of the community.

8.4: Inform, educate, and involve citizens.

8.5: Explore opportunities to increase the efficiency of City facilities.

8.6: Collaborate with local and regional partners on issues of mutual significance.





# HOW WILL THE POLICIES ENCOURAGE EFFECTIVE GOVERNMENT?



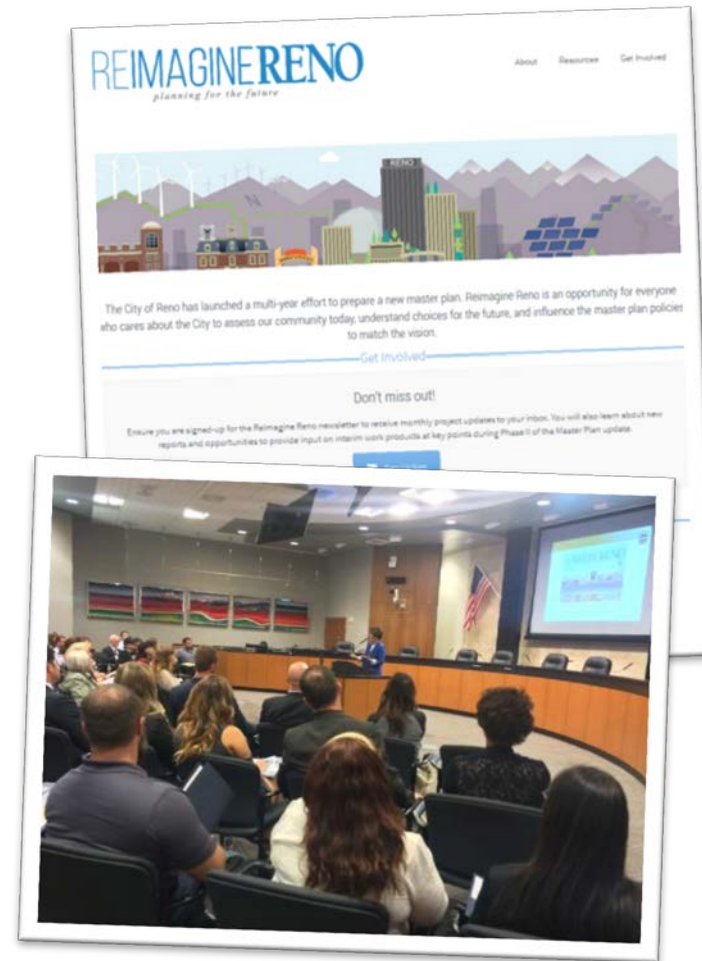
- Encourage broader and consistent use of the Master Plan as a decision-making tool
- Foster accountability to the goals that emerged from extensive Phase I community engagement
- Build on community engagement policies in current Master Plan (Policy Plan) and council strategic plan priorities



# Next Steps/Input Opportunities



- **Citywide Policies** input survey available for review online through May 19<sup>th</sup>
- **Land Use Plan map** available for review online by May 5<sup>th</sup>
- **July 25-26<sup>th</sup>**: Final Community Open Houses
  - Draft Master Plan available for review
- **August 2017**: Neighborhood Meetings
  - One meeting in each City ward
- **September/October 2017**: Plan Adoption (Joint City Council & Planning Commission Hearing)



[www.reno.gov/reimaginereno](http://www.reno.gov/reimaginereno)

# REIMAGINE RENO

*planning for the future*

