



RENO MASTER PLAN UPDATE

Citywide Policy Review

April 2017



We will cover



1. Master Plan Process To Date
2. Citywide Policy Overview
3. Conservation, Open Space, and Greenways Specific Policies



The Planning Process



May 2015 – Jan 2016

Setting the Stage

Feb – June 2016

1. Plan Foundations

July 2016 – Dec 2016

2: Focus Area Opportunities
and Key Choices

UNDERWAY

3: Draft and Final Plan

Aug- Sept 2017

4: Plan Adoption

Parts of the Plan



1. Plan Foundations (Complete)
 - Key plan concepts: Guiding Principles and Goals
2. Citywide Policies (Current Focus)
 - Organized by guiding principles and goals
3. Growth and Reinvestment Framework (Focus of Feb 2017 outreach)
 - Area-specific policies: Structure Plan, Land Use Plan, Design Principles
4. Implementation (In progress—coming soon)
 - Strategies/actions to support implementation of each goal
5. Appendices (In progress—coming soon)
 - Maps, technical reports, and other supporting information

Community Engagement to Date



- Over **6,000** people participated in Phase I visioning
- Over **2,200** people have participated in Phase II to date through web-surveys and in-person meetings
- **1,100 +** subscribers to monthly newsletters
- Ongoing coordination local and regional partners and targeted groups

More input opportunities as the Master Plan continues to take shape!



www.reno.gov/reimaginereno

Major Takeaways: Community Visioning



- Vision for Reno now and in the future:
 1. A base for outdoor activities
 2. An arts and culture center
 3. A university town & technology center
- Top community values
 - Safety for all
 - Well-maintained and attractive city and infrastructure
 - Affordability
 - Sense of community
- Other key takeaways:
 - People want more walkable neighborhoods
 - Improving downtown is very important

Want to Learn More?

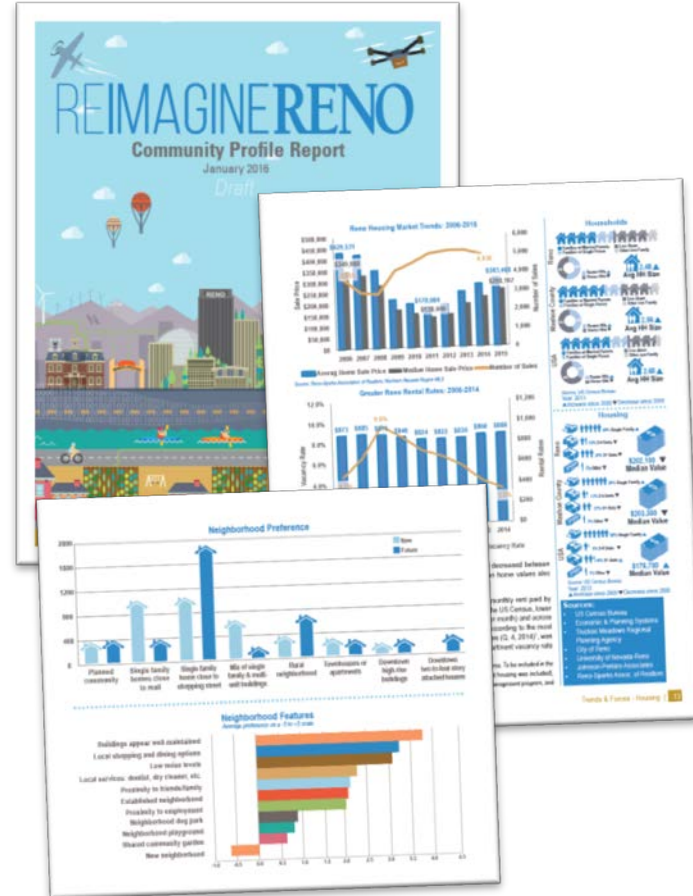


Phase I:

- Master Plan Assessment
- Community Profile
- Phase I Public Input Summary

Phase II:

- Draft Guiding Principles and Goals
- Employment Demand Forecast and Needs Analysis
- Housing Demand Forecast and Needs Assessment
- Draft Structure Plan and Design Principles
- Future Land Use Plan (coming soon!)



www.reno.gov/reimaginereno

We will cover



1. Master Plan Process To Date
2. Citywide Policy Overview
3. Conservation, Open Space, and Greenways Specific Policies



Guiding Principles



Resilient local and regional economy



Well-connected city and region



Responsible and well-managed growth



Safe, healthy, and inclusive community



Thriving downtown and university district



Quality places and outdoor recreation opportunities



Vibrant neighborhoods and centers



Effective government

GP 1: RESILIENT LOCAL & REGIONAL ECONOMY



GOALS

1.1: Build strong partnerships and encourage local and regional collaboration on economic development initiatives.

1.2: Promote a diverse and stable economic base.

1.3: Support continued growth of Reno's technology and knowledge-based sectors.

1.4: Support the growth, creation, and retention of local businesses and start-ups.

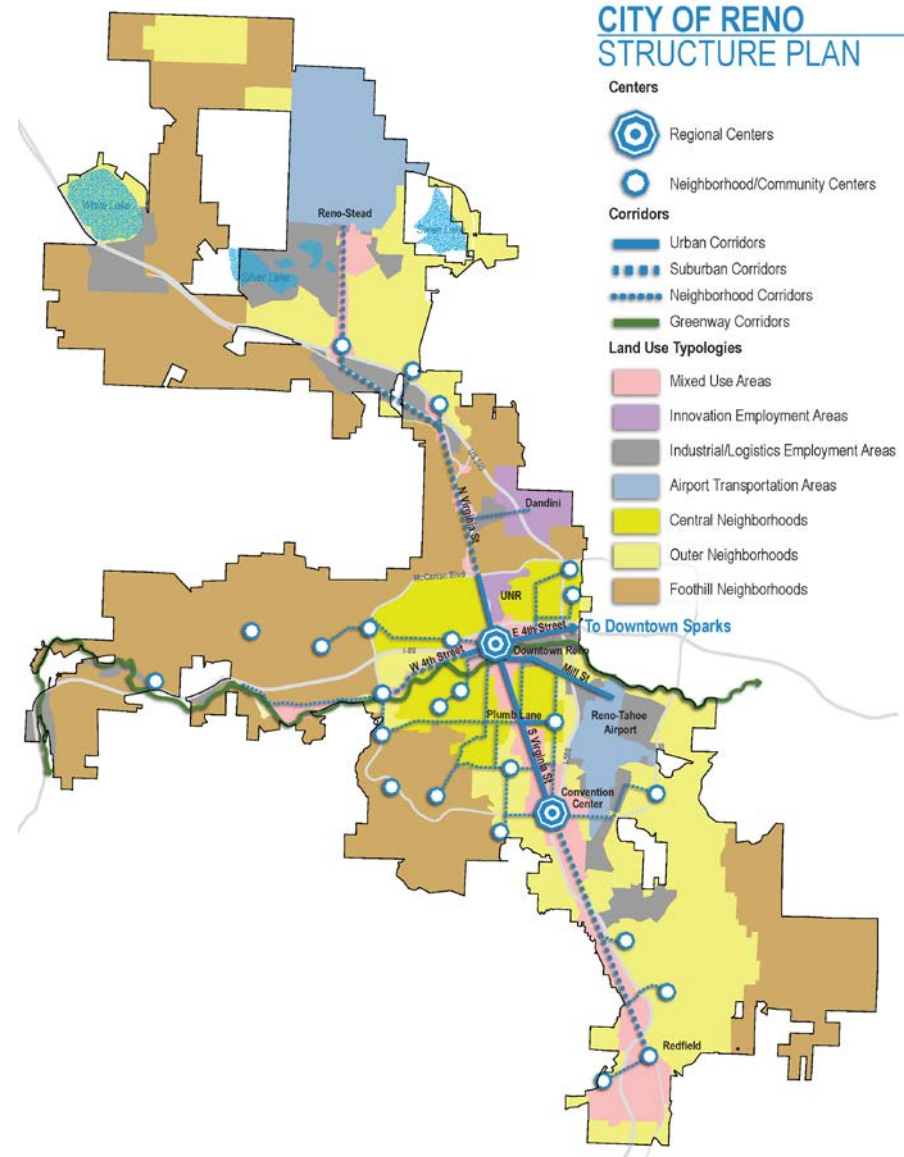
1.5: Support the development of a diverse, educated, and adaptable workforce.



HOW WILL THE POLICIES HELP PROMOTE A MORE RESILIENT ECONOMY?



- Provide a framework for local decision-making on economic development issues
- Foster continued collaboration with state and regional partners on initiatives that support the city's goals
- Support local businesses and start-ups
- Emphasize the importance of quality of life considerations



GP 2: RESPONSIBLE & WELL-MANAGED GROWTH



GOALS

2.1: Support a fiscally-responsible growth pattern and annexation policy to maintain and improve existing levels of service for current residents and future generations.

2.2: Encourage infill and redevelopment.

2.3: Ensure effective, efficient, and equitable delivery of city services and infrastructure.

2.4: Collaborate with regional entities and service providers on growth and infrastructure issues.

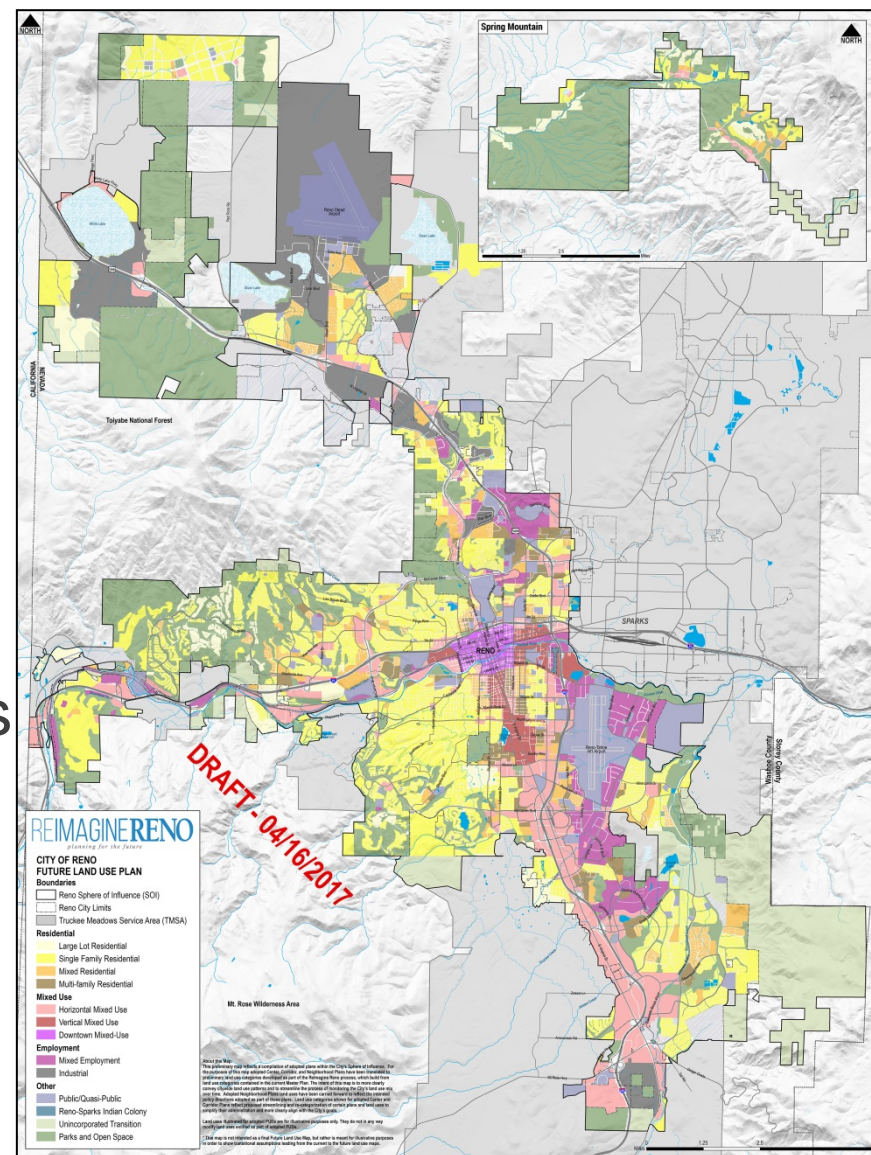
2.5: Promote the use of sustainable development practices.



HOW WILL THE POLICIES PROMOTE RESPONSIBLE & WELL-MANAGED GROWTH?



- Clarify parameters for future growth within the Sphere of Influence
- Establish priority areas for growth—generally, as well as for infill and redevelopment
- Encourage greater housing options in large developments
- Facilitate collaboration with partners in the region
- Encourage sustainable development practices



GP 3: THRIVING DOWNTOWN & UNIVERSITY DISTRICT



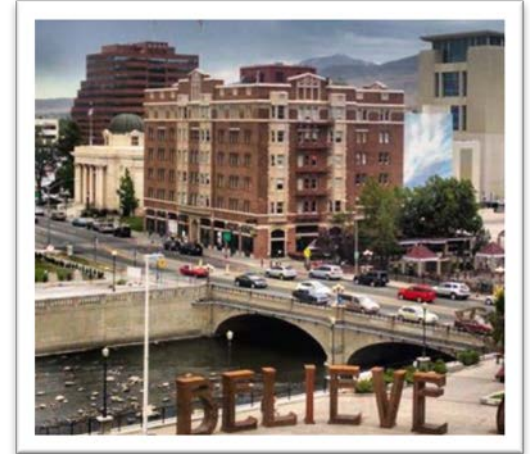
GOALS

3.1: Cultivate a vibrant and livable downtown environment that balances the needs of residents and visitors.

3.2: Enhance public safety and create inviting streets and public spaces for people.

3.3: Promote the continued revitalization of the downtown economy and built environment.

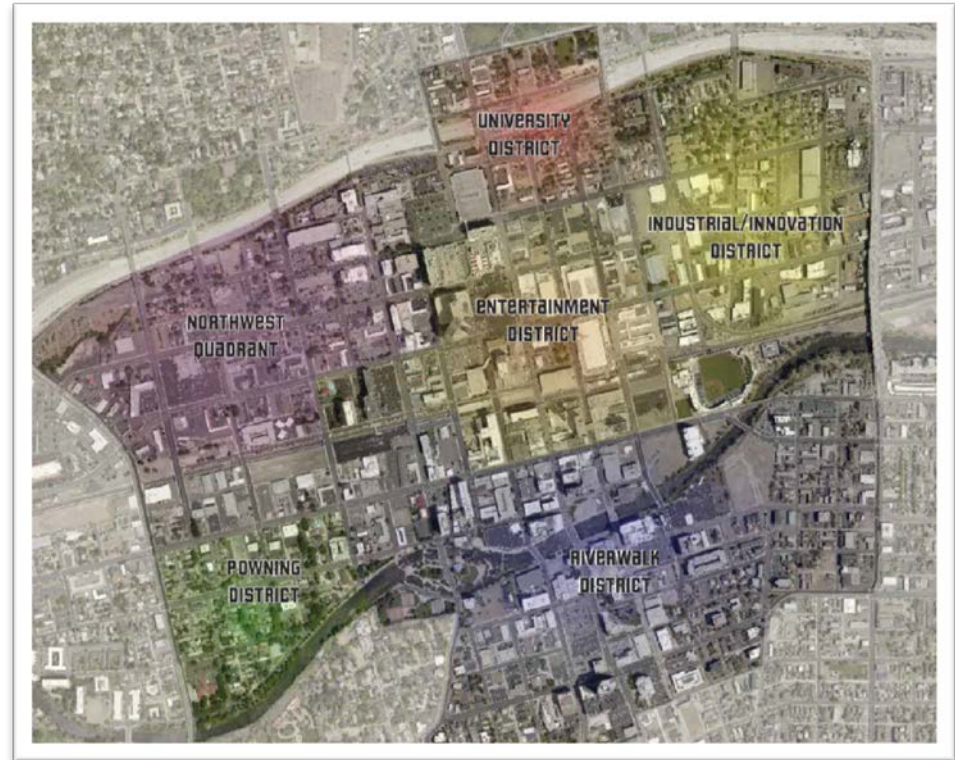
3.4: Strengthen multimodal connections to and within downtown Reno.



HOW WILL THE POLICIES PROMOTE A THRIVING DOWNTOWN & UNIVERSITY DISTRICT?



- Support core values defined as part Downtown Action Plan
 - Prosperous
 - Connected
 - Livable
 - Safe & Clean
 - Vibrant
- Policies and design principles reinforce district-level distinctions within downtown



GP 4: VIBRANT NEIGHBORHOODS & CENTERS



GOALS

4.1: Encourage a diverse mix of housing options to meet the needs of existing and future residents of all ages, abilities, and income levels.

4.2: Promote the development of new neighborhoods that offer a range of lifestyle options and amenities that meet the short- and long-term needs of the community.

4.3: Support continued investment in and ongoing maintenance of infrastructure and amenities in established neighborhoods.

4.4: Encourage the creation of walkable community/ neighborhood centers that provide a variety of services and amenities.

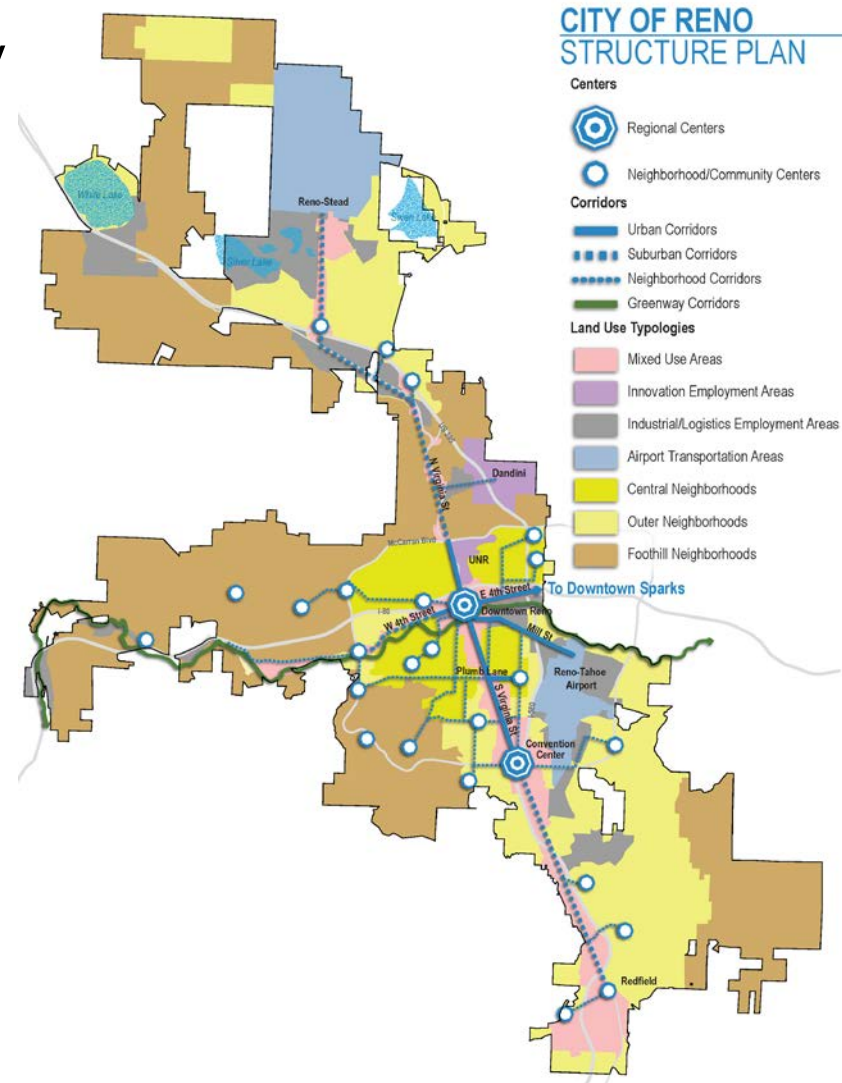
4.5: Encourage pedestrian and bicycle connections and greenways as part of new development and integrate into established neighborhoods.



HOW WILL THE POLICIES PROMOTE VIBRANT NEIGHBORHOODS AND CENTERS?



- Promote housing diversity/affordability
- Promote ongoing maintenance and reinvestment in established neighborhoods
- Improve access for pedestrians and bicycles
- Reinforce concepts included in the Structure Plan and Design Principles
 - Neighborhood Centers
 - Enhanced walkability in both new and existing neighborhoods



GP 5: WELL-CONNECTED CITY & REGION



GOALS

5.1: Continue to develop a balanced, well-connected bicycle and pedestrian network that enhances mobility for all modes.

5.2: Actively manage transportation systems and infrastructure to improve reliability, efficiency, and safety.

5.3: Facilitate the movement of goods and services throughout the region via truck, air, and rail.

5.4: Encourage the use of transit, car or van pools, bicycling, walking, and other forms of alternative transportation.

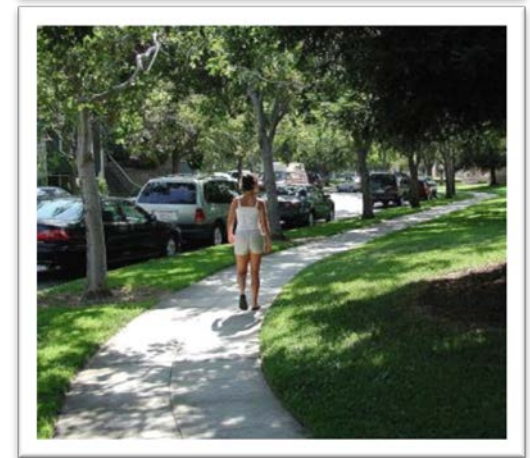
5.5: Anticipate and plan for the implications and opportunities associated with connected vehicles, autonomous vehicles, and the expected transition from personal car ownership to mobility-as-a-service.



HOW WILL THE POLICIES ADVANCE A WELL-CONNECTED CITY AND REGION?



- Consider and balance needs of all modes
- Reinforce city's role in transportation planning and establish clear links to the RTP and RTC programs:
 - RTP and RTIP
 - Bicycle & Pedestrian Plan
 - Complete Streets Master Plan
- Support a robust public transportation system
- Manage traffic operations and transportation demand
- Encourage alternative transportation options with trip-reduction programs, supportive development, first and last mile connections, and bikeways and supportive facilities



GP 6: SAFE, HEALTHY, AND INCLUSIVE COMMUNITY



GOALS

6.1: Continue to provide high-quality community safety and emergency response services.

6.2: Minimize risks to lives, property, and infrastructure due to natural disasters and other natural or man-made hazards.

6.3: Support active lifestyles among residents of all ages.

6.4: Encourage health and wellness through education and prevention.

6.5: Increase the availability of and access to fresh and local food.

6.6: Foster a culture of inclusivity—embracing and respecting the diversity of Reno’s residents.

6.7: Advocate for a strong and successful education system, workforce training, and lifelong learning opportunities.



HOW WILL THE POLICIES FOSTER A SAFER, HEALTHIER, AND MORE INCLUSIVE COMMUNITY?



- Reinforce the relationships between safety, access to services/equity, education, and food access
- Carry forward foundation of collaboration for human service provision
- Strengthen existing policies and address gaps:
 - Local food access
 - Hazard mitigation and risk reduction
 - Active living opportunities
 - Diversity and inclusivity



GP 7: QUALITY PLACES & OUTDOOR RECREATION OPPORTUNITIES



GOALS

7.1: Conserve and protect Reno's natural resources and environment.

7.2: Establish an interconnected network of open spaces and greenways.

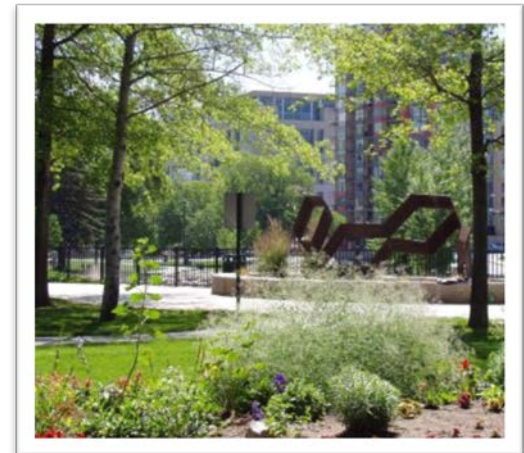
7.3: Maintain access to public lands at the urban/rural interface.

7.4: Increase Reno's profile as a center of arts and culture.

7.5: Protect and preserve Reno's heritage and historic assets.

7.6: Improve quality of the public realm (e.g. parks, public spaces, streets) through context-sensitive design, targeted investment, and regular maintenance.

7.7: Increase tree canopy and green spaces within the City.



HOW WILL THE POLICIES SUPPORT QUALITY PLACES & OUTDOOR ACTIVITIES?



- Protect and enhance community amenities, public spaces, and recreational opportunities that contribute to quality of life and economic vitality
- Move towards a more access-based approach for parks and recreational opportunities
- Reinforce input received during Phase I outreach regarding:
 - Access to the outdoors
 - High quality public places
 - Maintaining City's sense of place
 - Diverse natural and historic resources
 - Expanding the role of arts and culture



GP 8: EFFECTIVE GOVERNMENT



GOALS

8.1: Align day-to-day decision-making with the implementation of the Master Plan.

8.2: Enhance teamwork, cooperation, and problem-solving within the City organization.

8.3: Develop and support leadership that reflects the diversity of the community.

8.4: Inform, educate, and involve citizens.

8.5: Explore opportunities to increase the efficiency of City facilities.

8.6: Collaborate with local and regional partners on issues of mutual significance.



HOW WILL THE POLICIES ENCOURAGE EFFECTIVE GOVERNMENT?



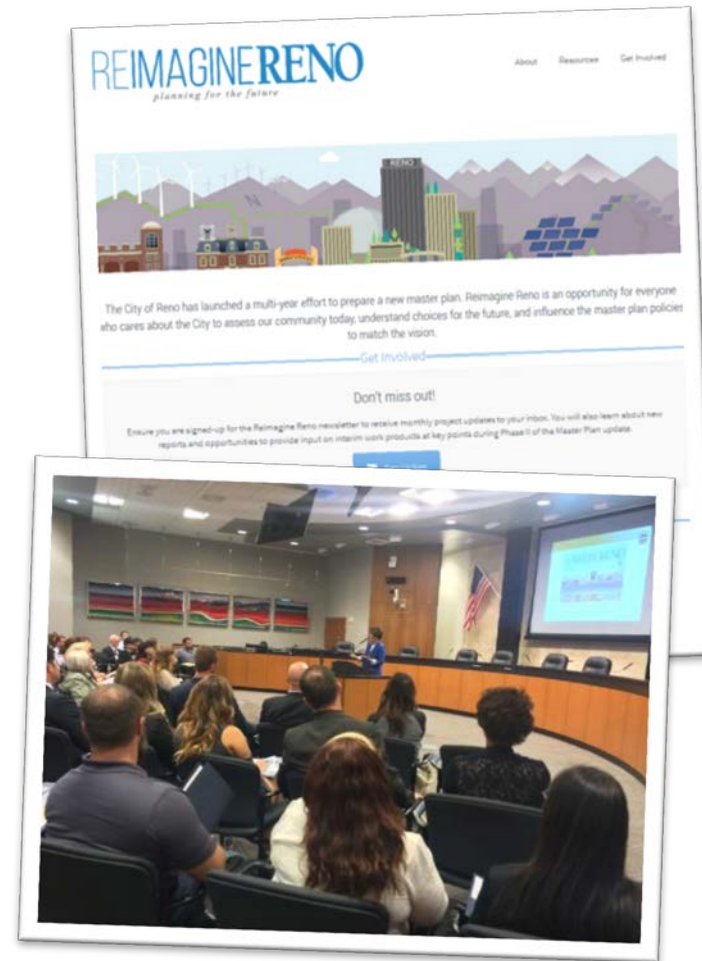
- Encourage broader and consistent use of the Master Plan as a decision-making tool
- Foster accountability to the goals that emerged from extensive Phase I community engagement
- Build on community engagement policies in current Master Plan (Policy Plan) and council strategic plan priorities



Next Steps/Input Opportunities



- **Citywide Policies** input survey available for review online through May 19th
- **Land Use Plan map** available for review online by May 5th
- **July 25-26th**: Final Community Open Houses
 - Draft Master Plan available for review
- **August 2017**: Neighborhood Meetings
 - One meeting in each City ward
- **September/October 2017**: Plan Adoption (Joint City Council & Planning Commission Hearing)

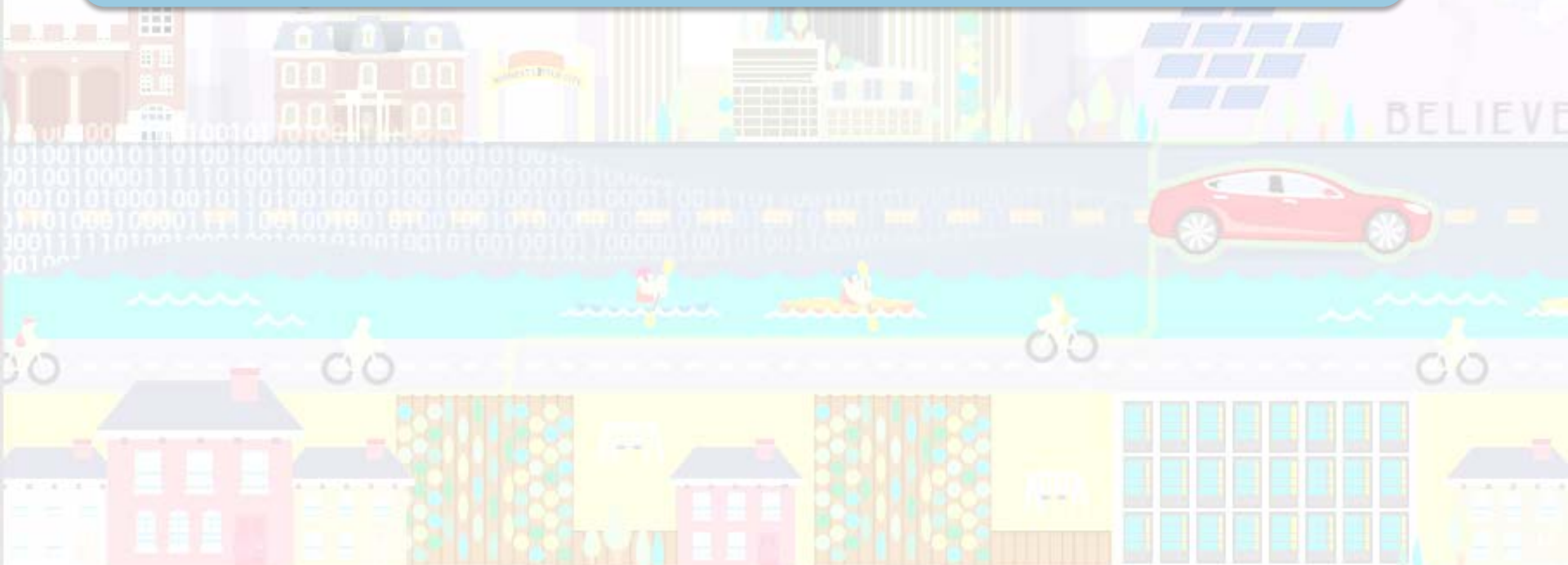


www.reno.gov/reimaginereno

We will cover



1. Master Plan Process To Date
2. Citywide Policy Overview
3. Conservation, Open Space, and Greenways Specific Policies



HOW WILL THE POLICIES SUPPORT QUALITY PLACES & OUTDOOR ACTIVITIES?

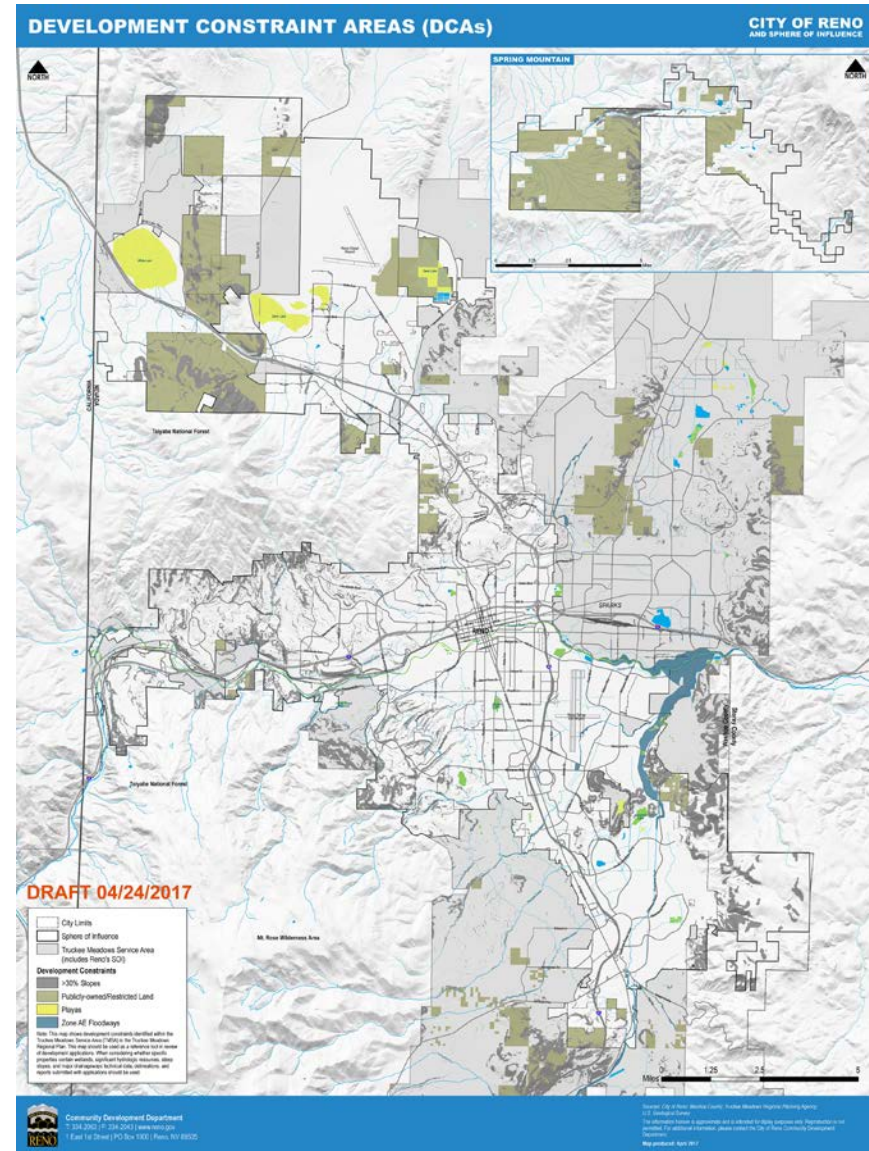


CONSERVATION

7.1: Conserve and protect Reno's natural resources and environment.

Policies address:

- Air quality
- Development constrained areas
- Environmentally sensitive areas
- Hydrologic resources
- Major drainageways
- No net loss of wetlands, stream environments, playas, stream-fed riparian and non-404 wetlands



HOW WILL THE POLICIES SUPPORT QUALITY PLACES & OUTDOOR ACTIVITIES?

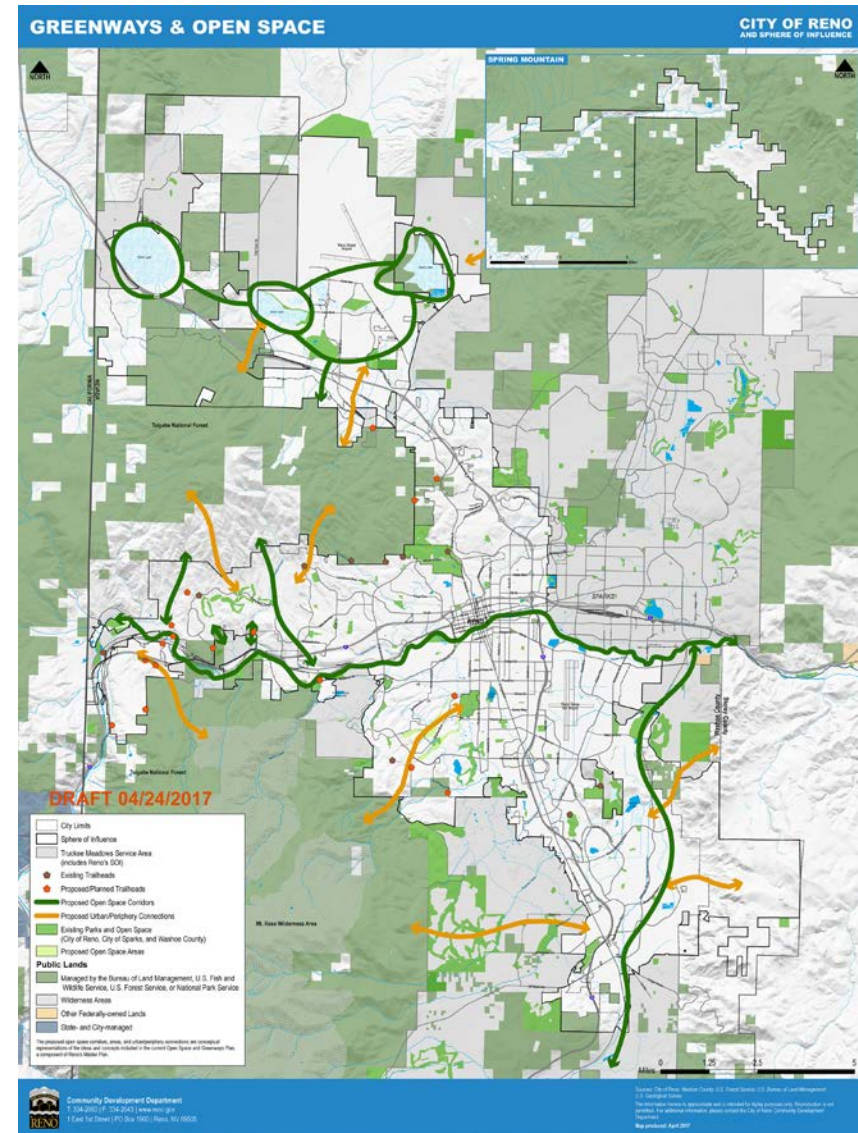


OPEN SPACE & GREENWAYS

7.2: Establish an interconnected network of open spaces and greenways.

Policies address:

- Open space and greenways network
- Truckee River and Steamboat Greenways
- Open space and greenway criteria
- Regional connections concepts
- Maintenance agreements
- Regional coordination



HOW WILL THE POLICIES SUPPORT QUALITY PLACES & OUTDOOR ACTIVITIES?



ACCESS TO PUBLIC LANDS

7.3: Maintain access to public lands at the urban/rural interface.

Policies address:

- Urban/periphery connectivity
- Access points
- Federal lands
- Flexible design



REIMAGINE RENO

planning for the future

